

# DDP 92

Digital Document Publisher

**LANIER**  
A RICOH COMPANY



## **Reliability, Industrial, Connectivity, Operability, High Volume**

The DDP 92 offers high-speed printing for production intensive environments.

# DDP 92

Digital Document Publisher

## Network Connectivity and Performance

Lanier redefines the way you think about production printing. The DDP 92, a powerful 92-page-per minute workhorse printer offers industrial strength printing for production intensive environments. The DDP 92 incorporates a high performance print controller, web utilities, custom bi-directional drivers, and an extensive range of capabilities and finishing options. All of this is designed to significantly improve your productivity and lower your total printing costs.

## Your Digital Document Publisher

Designed for high-volume applications like print on demand and system printing requirements, the DDP 92 features an engine life of 30,000,000 images and can print 1.2 million pages before the first printer engine PM cycle. You get capacity far exceeding standard copier-based network devices typically found in the general office. Built to last, the DDP 92's industrial strength components ensure that you get the highest quality output, page after page.

The DDP 92 offers you unprecedented media flexibility among printers in its price range. Manual covers on heavy stock, even tab dividers, can be printed from any main body tray, allowing you to generate sophisticated, integrated documents in a single pass. Paper sizes up to 12"x 18" (Super B) allow you to print full-bleed 11" x 17" /A3 layouts with trim marks, edge-to-edge printing at 600 x 600 dpi on any supported media, and the standard 6,150 sheet input capacity assures uninterrupted printing of high-volume runs.

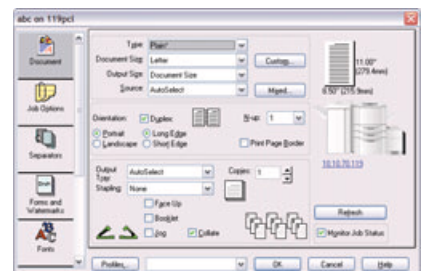
## Intelligent Forms

Reduce printing costs, move green bar paper reports and pre-printed forms to laser printer pages which can be formatted with custom logos, signatures and more. Custom printed standard and multi-part forms are expensive, why not create or modify your own forms quickly and effectively?

Reduce labor costs by eliminating storage, transportation and handling costs associated with custom printed forms and greenbar paper. No more struggling with form bursting and de-collating, print your custom forms on-demand when you need them!

## Advanced Print Drivers and Web Utilities

The Lanier bi-directional print drivers feature a graphical user interface for maximum printer control right from your workstation. With only one interface for PostScript or PCL these dynamic, feature-rich drivers enable end-to-end document production, including simplified post-document page insertion, front and back covers, and tab stock printing. Any document printing and finishing configuration can be saved as a profile for easy reuse.



Friendly web utilities provide access to the printer through the Internet or Intranet. Status of the printer, System functions and Service are all available through an embedded web server and color graphics provide a quick overview of the printer status in all three modes.



## Online, Offline Finishing

The standard Lanier finisher lets you print and finish your documents all in one pass. You get high productivity with multi-position stapling. All major paper sizes can be stapled with up to a 50-sheet stapling capacity. Stacking capacity is 2,500 sheets with offset, plus 200 non-stapled sheets.

The DDP 92 combined with one or two Container Stackers allows you to run very large production jobs unattended. When you add a pair of Container Stackers to your production printer you can feed, print and stack up to six thousand sheets without worrying about continuous operator support. The baskets provide you with a convenient way to transport the output to the finishing equipment for those production jobs that require offline finishing.

## Professional Quality Booklets with Publishing Finisher

Online finishing for the DDP 92 includes a Booklet Maker and a Publishing Finisher. The Booklet Maker supports on-demand and sheet insertion. Small booklets may be produced by folding standard Letter (SEF) paper or larger size booklets can be created by folding Ledger (SEF) 11" x 17" paper. Up to 20 regular sized five sheet booklets may be delivered to the special output stacker.

The Publishing Finisher provides professional quality booklets at a cost lower than high end publishing solutions. This superb online finisher is the powerful platform your business requires to produce quality booklets, catalogs and more. Saddle stitching, center-folding, trimming, stacking and sheet insertion are all standard features of the powerful Publishing Finisher.



## Specifications

PRINTING SPEED	SIMPLEX / DUPLEX
Letter /LEF	92 / 46 ppm
Letter/SEF	50 / 25 ppm
Legal	50 / 25 ppm
Ledger	46 / 23 ppm

### PAPER HANDLING

Standard Input	6,150 sheets total
Tray 1	2,000 B5 to 12" x 18" / (Super B) (20-lb)
Tray 2	500 A5 to 12" x 18" / (Super B) (20-lb)
Tray 3	500 A5 to 12" x 18" (Super B) (20-lb)
High Capacity Feeder	3,000 Letter / A4 sheets (LEF) (20-lb)
By-pass Tray	150 sheets (All Sizes)
Standard Output	2,700 sheets total
Standard Finisher	Multi-Position Stapling, Stacking, Offset Elevator Tray: 2,500 sheets Top Tray: 200 sheets (non-stapled)
Booklet Maker and Inserter	Saddle-stitch stapling, center folding, stacker and sheet insertion. Booklets to 15 sheets (20 lb) plus 1 cover page of 110 lb. (Index) stock. Inserter Tray Capacity 200 sheets (34 lb) Paper Size: Letter (SEF), Legal (SEF), Ledger (SEF), B5 (LEF), A4 (LEF/SEF), B4 (SEF), A3 (SEF) Paper Weight for Inserter: 16 lb - 110 lb (index)
Publishing Finisher	Saddle-stitch stapling, center folding, trimming, stacker, sheet insertion and more!
Container Stackers	Add up to two container stackers (4 containers) for production that requires offline finishing. Holds Letter / A4 and Ledger / A3 paper sizes up to 6,000 pages (20-lb.) maximum.

### PAPER WEIGHTS

Input Tray	16-54 lb., (index to 110 lb)
By-Pass Tray	17-54 lb., (index to 110 lb)

### PRINT CONTROLLER

Processor	375 MHz PowerPC 750 processor with 128 MB RAM, 40 GB HDD
Resolution	600 x 600 dpi
Page Description Languages	PCL 5e, PCL XL and optional Adobe PostScript 3
Printer Ready	PDF, TIFF
Embedded Web Server	Real-time device monitoring and configuration

### DRIVERS

Custom Mercury bi-directional drivers for Windows 98/95/2000/NT 4.0/XP; PPD for Apple Macintosh OS 8. x/9.x

### OPTIONS

**Data Stream Conversion** AFP/IPDS, SCS, LCDS/Metacode to Adobe Postscript or PCL

### NETWORK CONNECTIVITY

Standard Interface	10 /100 Base-T Ethernet, Bi-Directional Parallel
Protocols	TCP / IP; optional - IPX/SPX, EtherTalk

### CONSUMABLES

Toner	Average Yield: 36,000 images (5% coverage)
Developer	Average Yield: 480,000 images
Drum	Average Yield: 400,000 images
Fuser Unit	Average Yield: 1,600,000 images
Fuser Cleaning Web	Average Yield: 320,000 images
Staple Cartridges	5,000 staples per cartridge (two cartridges per machine)
PM Cycles	First PM for finisher is 400,000 images First PM for each engine is 1,200,000 images.

### PHYSICAL

Power	200-240V, 8.5 A at 230V
Weight	560 lbs. (254 kg)
Dimensions (H X W X D)	45 x 75 x 26 in. (115 x 192 x 66 mm)
Duty Cycle	800,000 images/month
Printer Engine Life	Five years or 30 million impressions, whichever comes first.
Required Maintenance Area (W X D)	101 x 101 in. (2550 x 2565 mm)

Lanier is a registered trademark of Lanier Worldwide, Inc.

All registered trademarks or trade names are the property of their respective owners and are hereby acknowledged.

For best results, we recommend that you use only Lanier consumables and supplies. Due to our policy of continued improvement, Lanier reserves the right to alter specifications of this product without prior notice.



As an ENERGY STAR® Partner, Lanier Worldwide, Inc. has determined that this product meets the ENERGY STAR® guidelines for energy efficiency.