

DDP 70e

Digital Document Publisher



Reliability, Industrial, Connectivity, Operability, High Volume

The DDP 70e offers high-speed printing for production intensive environments.

DDP 70e

Digital Document Publisher

Network Connectivity and Performance

The DDP 70e is supercharged by a powerful, high performance print controller. Based on a 375 MHz PowerPC processor with a high-speed 64 bit memory architecture, the controller provides enough horsepower to drive the DDP 70e at its full rated speed. Standard emulations include PCL 5e and PCL XL. Adobe® PostScript® 3™ is available as an option.

Virtual Printer Technology® (VPT) is also supported. This feature enables a single printer to support up to 64 print services or “virtual printers,” each can be individually configured to address environments that do not rely on print drivers, such as Unix.

Your Digital Document Publisher

Designed for high-volume applications like print on-demand, the DDP 70e features an engine life of 20,000,000 images and can print 1.2 million pages before the first engine PM cycle. You get capacity far exceeding copier-based network devices typically found in the general office. Built to last, the DDP 70e's industrial strength components ensure that you get the highest quality output page after page.

The DDP 70e offers unprecedented media flexibility among printers in its price range. Manual covers on heavy stock, even tab dividers, can be printed from any main body tray, allowing you to generate sophisticated, integrated documents in a single pass. Paper sizes up to 12"x18" (Super B) allow you to print full-bleed 11"x 17"/A3 layouts with trim marks, edge-to-edge printing at 600 x 600 dpi on any supported media, and the standard 6,150 sheet input capacity assures uninterrupted printing of high-volume runs.

Data Stream Conversion

Lanier's data stream conversion solutions provide a way to easily migrate your mainframe or AS/400 output to production laser printers without changing your legacy applications. Convert AFP/IPDS, SCS or LCDS/Metacode to PostScript® or PCL and enhance your reports with new printing and finishing features. Increase your printer efficiency by sharing mainframe printer resources with local area network PC users. When you switch to laser printing you can also add eforms and eliminate pre-printed forms costs of storage and obsolescence.

Advanced Print Drivers and Web Utilities

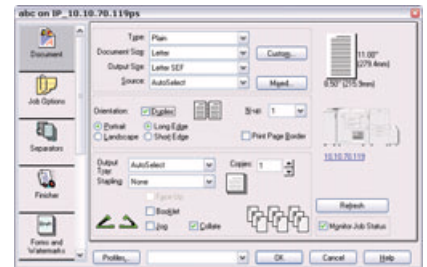
The Lanier bi-directional print drivers feature a graphical user

interface for maximum printer control right from your workstation. With only one interface for PostScript or PCL these dynamic, feature-rich drivers enable end-to-end

document production, including simplified post-document page insertion, front and back covers, and tab stock printing. Any document printing and finishing configuration can be saved as a profile for easy reuse.

Friendly web utilities provide access to the printer through the Internet or Intranet. Status of the printer, System functions and Service are all available through an embedded

web server and color graphics provide a quick overview of the printer status in all three modes.



Online, Offline Finishing

The Lanier Advanced Finisher lets you print and finish your documents all in one pass. You get high productivity with minimal speed reduction for letter/A4 for all staple positions. All major paper sizes can be stapled with up to a 50-sheet stapling capacity. Stacking capacity is 2,000 sheets with offset, plus 200 non-stapled sheets.

The DDP 70e combined with one or two Container Stackers allow you to run very large production jobs unattended. When you add a pair of Container Stackers to your production printer you can feed, print and stack up to six thousand sheets without worrying about continuous operator support. The baskets provide you with a convenient way to transport the output to the finishing equipment for those production jobs that require offline finishing.

Professional Quality Booklets with Publishing Finisher

This superb online publishing finisher provides professional quality booklets at a cost lower than high end publishing solutions. The unique finisher is the powerful platform your business requires to produce quality booklets, catalogs and more. Saddle stitching, center-folding, trimming, stacking and sheet insertion are all standard features of the powerful DDP 70e Publishing Finisher.



Specifications

PRINTING SPEED	SIMPLEX / DUPLEX
Letter /LEF	70 / 35 ppm
Letter/SEF	40 / 20 ppm
Legal	40 / 20 ppm
Ledger	35 / 18 ppm

PAPER HANDLING

Standard Input	6,150 sheets total
Tray 1	2,000 B5 to 12" x 18" / (Super B) (20-lb)
Tray 2	500 A5 to 12" x 18" / (Super B) (20-lb)
Tray 3	500 A5 to 12" x 18" (Super B) (20-lb)
High Capacity Feeder	3,000 Letter / A4 sheets (LEF) (20-lb)
By-pass Tray	150 sheets (All Sizes)
Standard Output	2,200 sheets total
Advanced Finisher	Multi-Position Stapling, Stacking, Offset Elevator Tray: 2,000 sheets Top Tray: 200 sheets (non-stapled) Face-up / Face-down stacking
Publishing Finisher	Saddle-stitch stapling, center folding, trimming, stacker, sheet insertion and more!
Container Stackers	Add up to two container stackers (4 containers) for production that requires offline finishing. Holds Letter / A4 and Ledger / A3 paper sizes up to 6,000 pages (20-lb.) maximum.

PAPER WEIGHTS

Input Tray	16-54 lb., (index to 110 lb)
By-Pass Tray	17-54 lb., (index to 110 lb)

PRINT CONTROLLER

Processor	375 MHz PowerPC 750 processor with 128 MB RAM, 40 GB HDD
Resolution	600 x 600 dpi
Page Description Languages	PCL 5e, PCL XL and optional Adobe PostScript 3
Printer Ready	PDF, TIFF
Embedded Web Server	Real-time device monitoring and configuration

DRIVERS

Custom Mercury bi-directional drivers for Windows 98/95/2000/NT 4.0/XP; PPD for Apple Macintosh OS 8. x/9.x

OPTIONS

Data Stream Conversion AFP/IPDS, SCS, LCDS/Metacode to Adobe Postscript or PCL

NETWORK CONNECTIVITY

Standard Interface 10 /100 Base-T Ethernet, IEEE 1284 Parallel
Protocols TCP / IP; optional - IPX/SPX, EtherTalk

CONSUMABLES

Toner	Average Yield: 36,000 images (5% coverage)
Developer	Average Yield: 480,000 images
Drum	Average Yield: 400,000 images
Fuser Unit	Average Yield: 1,600,000 images
Fuser Cleaning Web	Average Yield: 320,000 images
Staple Cartridges	5,000 staples per cartridge (two cartridges per machine)
PM Cycles	First PM for finisher is 400,000 images First PM for each engine is 1,200,000 images.

PHYSICAL

Power	200-240V, 8.5 A at 230V
Weight	526 lbs. (239 kg)
Dimensions	41 x 72 x 26 in. (103 x 183 x 66 mm)
Duty Cycle	600,000 images/month
Printer Engine Life	Five years or 20 million impressions, whichever comes first.
Required Maintenance Area (W X D)	101 x 101 in. (2550 x 2565 mm)

Lanier is a registered trademark of Lanier Worldwide, Inc.

All registered trademarks or trade names are the property of their respective owners and are hereby acknowledged. For best results, we recommend that you use only Lanier consumables and supplies. Due to our policy of continued improvement, Lanier reserves the right to alter specifications of this product without prior notice.



As an ENERGY STAR® Partner, Lanier Worldwide, Inc. has determined that this product meets the ENERGY STAR® guidelines for energy efficiency.