

# SAVIN®

## Pro C550EX/C700EX Color Digital Imaging System

SPEED >

QUALITY >

FLEXIBILITY >

POWER >

**CONTROL >**



**Increase productivity and  
profitability for full-color jobs.**



## Build your business with high-speed color.

Designed to help all kinds of production environments grow revenue and strengthen profitability, the SAVIN® Pro C550EX/C700EX color digital imaging system delivers outstanding speed, reliability and flexibility, as well as a powerful EFI Fiery® E-8100 Print Server for high-quality color with precise control. Add this fast, dependable system to increase productivity and take on a wider variety of jobs, so you can keep every customer coming back for more.



Find the features you need in seconds with the intuitive LCD touch-screen.

### Accelerate Productivity

Outpace your competition and turn important jobs around quickly with exceptional speed for full-color and black & white output.

- Make quick work of any job with the Pro C550EX, which delivers 55 color or 60 black & white pages per minute (ppm), or the Pro C700EX, which achieves speeds of 70 color or 75 black & white ppm. Duplexing runs at 100% of rated speed.
- Reduce wait-time between jobs. The multitasking E-8100 enables you to print one job while simultaneously RIPping a second. Its standard 2.13 GHz processor and 2GB memory help ensure fast performance, even for complex, color-intense files.
- Hit deadlines every time, especially rush orders. Together, the SAVIN Pro C700EX and the E-8100 form the fastest color output combination in this segment.
- Ensure smooth operation with the large, full-color WVGA control panel, which offers an intuitive menu that makes it easy for any user to find the right settings.
- Minimize interruptions by maximizing paper input capacity. The systems hold up to 5,300 sheets to support extended runs.

## Maximize Color Control

The high-performance E-8100 provides the extra horsepower you need to ensure consistency, control workflow and deliver vivid full-color output.

- Understand complex jobs at a glance with a new user interface. Simple, easy-to-follow menus allow anyone to navigate sophisticated imposition settings.
- Manage workflow from a single PC with the Command WorkStation® utility, which enables you to rearrange job queues and edit multiple jobs on the fly.
- Maximize efficiency and speed with extensive job management features, including Rush Print, Process Next, Print Next and Paper Catalog.
- Ensure optimal color quality with the optional Fiery Graphic Arts Package Premium Edition, which allows you to optimize screen settings, simulate dithering patterns and perform manual or automatic trapping.

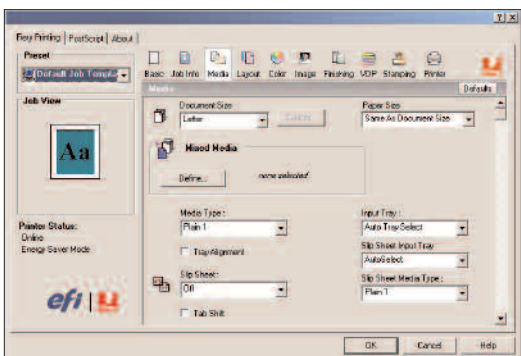
- Prepare jobs rapidly with optional EFI Impose. This utility enables users to choose imposition settings, selecting gang-up style, gutter size and binding method.
- Reduce errors and reprints with the optional EFI Compose utility, which lets you preview and edit pre-processed jobs prior to final output.
- Increase color accuracy across many different platforms, applications and media types with Fiery Spot-On utility.
- Accelerate processing with Hot Folders, which allow users to drag a job into a folder and automatically apply a pre-determined configuration of job settings.
- Create customized marketing and promotions with optional support for a variety of variable data printing techniques.

## Optimize Image Quality

In addition to its state-of-the-art controller, the SAVIN Pro C550EX/C700EX includes several features that help ensure excellent image quality.

- Sharpen every image with new PxP toner technology. Smaller toner particles ensure smooth, even distribution, which enhances edge definition, coverage and density while improving color matching.
- Parallel calibration ensures consistent color quality over long job runs.
- Remove trace indentations that can occur after fusing. The system incorporates a smaller, more precise mechanism for moving paper in and out of the fuser unit.

## E-8100 Interface



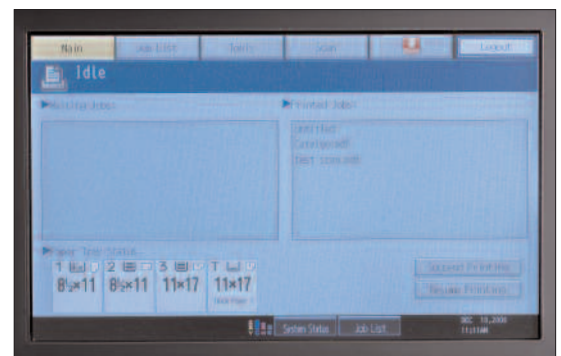
The easy-to-use, icon-driven Fiery interface can be arranged to display the most commonly used features and settings.

## Fiery® E-8100



The fast, powerful Fiery E-8100 Print Server ensures optimal full-color output.

## Touch Panel Display



The integrated touch-panel display puts all Fiery features and functions at your fingertips.

# Pro C550EX/C700EX Color Digital Imaging System

**SPEED > QUALITY > FLEXIBILITY > POWER > CONTROL >**

## Variable Data Printing



Meet customer requests for on-demand printing and other one-to-one marketing tools with extensive variable data printing support.

## Finishing and Media Flexibility

Configure the system with one or more in-line finishing options and run a diverse array of media to meet your customers' most pressing needs.

- Handle a very wide range of stock. The paper trays accommodate weights up to 80 lb. Cover and will duplex up to 90 lb. Index.
- Run longer jobs on more sizes with the standard Large Capacity Tray. It accepts sizes up to 12" x 18" and weights up to 110 lb. Cover, and holds up to 2,000 sheets.
- Produce booklets up to 60 pages (15 sheets) with the optional SR4020 Booklet Maker.
- Insert maps, drawings, plans and other large documents in smaller-format documents with the Z-Fold Unit.

## Smooth, Easy Operation

Light production environments need to move quickly, with no room for error. This system ensures simple, convenient operation at all times.

- Locate E-8100 features immediately by pressing the Fiery Driven key located on the system's control panel.
- Never say no to your customers. Take advantage of a comprehensive lineup of copying, scanning, faxing and storage capabilities to handle virtually any task.
- Place the system anywhere in the shop — especially in locations where floor space is at a premium — with its small footprint.

## The Total Green Solution

Savin continues its long-standing commitment to developing solutions with environmentally friendly and superior energy- and supply-saving features, without compromising productivity.



**Optional Cover Interposers**

Feed pre-printed sheets from one or two sources for front and back covers.

**Optional Z-Fold Unit**

Insert larger sheets within smaller-format documents.

**Optional 3,000-Sheet Finishers**

Choose from 50- or 100-sheet stapling and 2- or 3-hole punching.

**Optional 2,000-Sheet Booklet Finisher**

Fold and staple documents to produce finished booklets.

**Tandem 2 x 1,100-Sheet Paper Tray, Two 550-Sheet Paper Trays and Bypass**

The system holds 5,300 sheets in its standard configuration.

**100-Sheet Automatic Reversing Document Feeder (ARDF)**

Scan a color page in 1.0 seconds or a black & white page in 0.8 seconds.

**WVGA Control Panel**

Set up jobs in seconds with the large, full-color LCD touch-screen.



**Standard Large Capacity Tray**

Using the Bypass Tray and an air-assist mechanism, the standard RT4000 DLT/LCT feeds 2,000 sheets (up to 12" x 18" and 110 lb. Cover [300 g/m<sup>2</sup>]) with outstanding reliability.

**GBC StreamPunch III**



Use the GBC StreamPunch III to produce clean, precisely punched documents in a range of styles.

**BK5010 Production Booklet Maker**



Create saddle-stitch square fold booklets up to 120 pages.

**Ring Binder RB5000**



In-Line Ring Binding — with the new Ring Binder RB5000 — eliminates the time and expense of inserting binding elements off-line, dramatically saving time and labor.

