

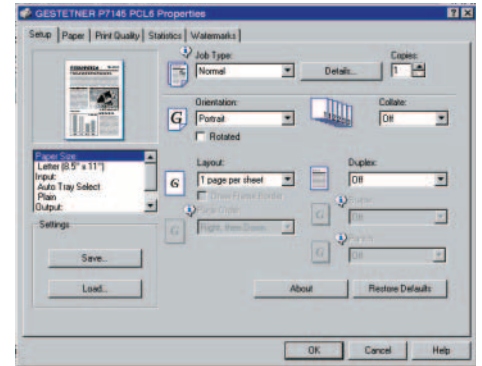
Gestetner

High speed with diverse paper handling capabilities



NETWORK LASER PRINTER

P7145



User-friendly print drivers help you easily navigate through your set-up and output choices.

Exceeds your expectations

THE GESTETNER P7145 NETWORK PRINTER IS A SURE THING WHEN IT COMES TO INCREASING PRINTING PRODUCTIVITY. EXCEPTIONAL PERFORMANCE...SUPERIOR IMAGE QUALITY...VERSATILE PAPER HANDLING...INTELLIGENT FINISHING CAPABILITIES...STRAIGHTFORWARD NETWORK INTEGRATION...AND COMPREHENSIVE NETWORK MANAGEMENT. WITH SO MUCH TO OFFER, WHY WOULD YOU EVEN CONSIDER ANYTHING ELSE?

LIVES LIFE IN THE FAST LANE

With the Gestetner P7145 on your network, your workgroup always gets a 100%.

- Some network printers really drop the ball when it comes to two-sided printing...but the P7145 isn't one of them. Single-sided or two-sided, the P7145 provides 45 PPM, 600 dpi throughput.
- Go from "off" to "full speed" in a flash with Quick Start-Up (QSU) technology.

NO PRIMA DONNA

Corporate networks become more complex everyday, so you need a reliable network printer.

- Take advantage of a standard Fast Ethernet connection for seamless integration with today's most popular network platforms – or choose the new IEEE 1394 Interface for data transmission speeds of up to 400 Mbps.

- Eliminate printer gridlock with the P7145's speedy processor, 64 Bit ASIC technology and multiple original set printing.

- Ensure compatibility for Windows and Macintosh platforms with standard PCL and PostScript print drivers. Plus, an optional hard disk drive offers local font storage for instant access to a wide variety of Windows compatible and Adobe Type 1 fonts.

DRIVEN TO PERFECTION

Optimized for Windows clients, Refined Print Command Stream (RPCS) PDL guarantees correct output every time you click on "print".

- Process files – including sophisticated graphics files – at maximum throughput speeds.
- Instantly access all of the P7145's output capabilities via an intuitive Comprehensive Driver Interface.



MANAGES ITSELF

Network printer management is elevated to new heights with SmartNetMonitor software.

- Designed to meet the individual needs of network administrators and users, SmartNetMonitor ships with two software components. SmartNetMonitor for Admin facilitates easy installation and system management. SmartNetMonitor for Client enables users to visually monitor the status of networked P7145s – including system configuration, system status, toner levels and paper supplies.
- SmartNetMonitor's Recovery Printing enables users to shift print jobs to another networked P7145 in the event the first system is unable to complete a print job.
- Parallel Printing allows users to send large jobs to multiple networked P7145s, which instantly – and inexpensively – maximizes output productivity.

FINISHES THE JOB

With the Gestetner P7145, you'll never worry about the finished product.

- Print your documents on a variety of paper types and sizes. Six different available paper sources and a maximum paper capacity of 3,550 sheets let you power uninterrupted through even the longest print runs. Additionally, the P7145 automatically finds – and pulls – the correct paper.
- Automatically print on both sides of the sheet – at full system speed – and cut your paper costs in half.
- Use Proof Printing to check jobs before printing multiple sets to eliminate costly errors.
- Produce professional manuals and booklets – automatically stapled in a variety of positions – with the optional finisher. For greater versatility add the handy 3-hole punch option and eliminate the need for expensive pre-drilled paper stock.

- Add the dedicated mailbox option and up to nine individuals – or departments – can direct print output to specific bin locations. For maximum output flexibility and productivity, install the dedicated mailbox with the finisher option – increasing your total output capacity to an amazing 4,900 sheets.

READY TO GO TO WORK

Give the Gestetner P7145 a spot in your workgroup and watch printing productivity skyrocket! For more information about the Gestetner P7145 Network Printer, contact your authorized Gestetner sales location.

www.gestetnerusa.com

Configure the P7145 to meet your specific needs. Choose from two finishers, a dedicated mailbox and a variety of paper supply options.



P7145

NETWORK LASER PRINTER

Engine

Configuration Technology	Desk Top Laser Beam Scanning and Electrophotographic Printing
Toner	Dry, Dual Component
Resolution	300/600 dpi with Edge Smoothing (1200 dpi)
Warm-Up Time	22 Seconds or Less
Continuous Print Speed	45 PPM (Letter Size)
First Print Speed	5.9 Seconds or Less
Hard Disk Drive	10 GB (optional)
Operation Panel	LCD, 16 Characters x 2 Lines
Dimensions (WxDxH)	26.4" x 25.2" x 22.0" (Includes Duplex Unit and Bypass Tray)
Weight	138.9 lbs.

Paper Handling

Input Capacity (Standard)	Dual 500 Sheet Front Loading User Adjustable Trays 50 Sheet Bypass
Input Capacity (Optional)	Dual 500 Sheet Front Loading User Adjustable Trays
Input Capacity (Maximum)	3,550 Sheets/6 Sources
Output Capacity (Standard)	500 Sheets (with Bridge Unit 250 Sheets)
Output Capacity (Optional)	9 Bin Mailbox - 100 Sheets per Bin with 500 Sheet Proof Tray; 1,000 Sheet Finisher; 3,000 Sheet Finisher
Output Capacity (Maximum)	4,900 Sheets
Paper Size	5.5" x 8.5" - 11" x 17"
Paper Weight	Paper Trays and LCT 20 - 28 lb. Bypass Tray 14 - 44 lb. Duplex Tray 17 - 28 lb.
Automatic Duplex Printing	Standard, Vertical, Stackless
Continuous Duplex Print Speed	45 IPM (Images Per Minute - Letter)

Controller Specifications

CPU	RM7000A, 300 MHz with 64 Bit ASIC
Interface	IEEE 1284 ECP, Nibble Compatible
Network Interface	100/10BaseT, optional IEEE1394 I/F
RAM Memory Capacity	Standard 64 MB DRAM, 1 additional slot
Maximum Memory Size	320 MB
Standard PDL	PCL6 (PCL5e & XL) emulation; Adobe PostScript 3; RPCS
Resolution	PCL5e: 600/300 dpi; PCL6: 600 dpi; PS3: 600 dpi; RPCS: 600 dpi
Resolution Enhancement	Edge Smoothing (1200 dpi)
Fonts	35 Intellifont, 10 TrueType Fonts, 1 Bitmap Font, 31 Fonts can be downloaded by Agfa Font Manager, 136 Adobe Type 1 Fonts
Driver	PCL5e - Windows 95/98/Me/NT 4.0/2000/XP PCL6 - Windows 95/98/Me/NT 4.0/2000/XP RPCS - Windows 95/98/Me/NT 4.0/2000/XP Adobe PostScript 3 - Windows 95/98/Me/NT 4.0/2000/Macintosh OS 8.6 or later

Network Interface Specifications*

Topology	Ethernet 10/100BaseT
Network Interface Connector	RJ-45
Network Protocols	TCP/IP, IPX/SPX, NetBEUI, IPP, AppleTalk
Network Operating Systems	Novell NetWare - 3.x; 4.x with Bindery Emulation; 4.x in Native (NDS) Mode; 5.0, 5.1 TCP/IP - Using LPR: Windows 3.x/95/98/2000; Windows NT 4.0 Peer-to-Peer - Windows IP Peer-to-Peer Printing; Windows 95/98/2000, NT 4.0 AppleTalk - Using Ethertalk protocol
Utilities	SmartNetMonitor; Web Browser; Agfa Font Manager; Printer Utility for Mac; DeskTopBinder

*Windows 3.1, PCL5e and PCL6 drivers available from www.gestetnerusa.com

RT36 Large Capacity Tray

Capacity	1,500 Sheets
Paper Size	11" x 8.5"
Paper Weight	20 - 28 lb.
Dimensions (WxDxH)	15.4" x 19.7" x 15.4"
Weight	37.5 lbs.

Gestetner

Gestetner Stamford, Connecticut 06904
Product specifications subject to change without notice.
All other trademarks are the property of their respective owners.
Printed in U.S.A. (G1586) 25M 12/01



SR730 Finisher

Type	Floor Standing
Shift Tray	
Paper Size	5.5" x 8.5" - 11" x 17"
Paper Weight	14 - 42 lbs.
Paper Capacity	
Without Hole Punch	3,000 sheets 8.5" x 11" 1,500 sheets 8.5" x 14", 11" x 17"
With Hole Punch	2,500 sheets 8.5" x 11" 1,500 sheets 8.5" x 14", 11" x 17"

Proof Tray	
Paper Sizes	5.5" x 8.5" - 11" x 17"
Paper Weight	14 - 42 lbs.

Paper Capacity	
Without Hole Punch	250 sheets 8.5" x 11" 50 sheets 8.5" x 14", 11" x 17"
With Hole Punch	200 sheets 8.5" x 11" 50 sheets 8.5" x 14", 11" x 17"

Staple Capacity	
Without Hole Punch	50 sheets 8.5" x 11" 30 sheets 8.5" x 14", 11" x 17"
With Hole Punch	40 sheets 8.5" x 11" 25 sheets 8.5" x 14", 11" x 17"

Staple Paper Size	8.5" x 11" - 11" x 17"
Staple Paper Weight	17 - 20 lbs.
Staple Positions	7 positions
Dimensions (WxDxH)	24.7" x 21.5" x 37.8"
Weight	99.3 lbs.

SR720 Finisher

Type	Hanging
Stack Capacity	1,000 sheets 8.5" x 11" 500 sheets 8.5" x 14", 11" x 17"
Paper Sizes	5.5" x 8.5" - 11" x 17"
Paper Weight	14 - 42 lbs.
Staple Capacity	30 sheets 8.5" x 11" & smaller 20 sheets 8.5" x 14", 11" x 17"
Staple Paper Size	8.5" x 11", 8.5" x 14", 11" x 17"
Staple Positions	1 position
Dimensions (WxDxH)	22.4" x 20.5" x 24.6"
Weight	46.3 lbs.

CS360 9-Bin Addressable Mailbox

Number of Bins	9 bins and 1 Proof Tray
Paper Size	8.5" x 11" - 11" x 17" per bin 5.5" x 8.5" - 11" x 17" Proof Tray
Paper Capacity	100 sheets per bin; 500 sheets Proof Tray
Paper Weight	16-24 lbs. per bin; 14 - 42 lbs. Proof Tray
Stapling	Not available
Dimensions (WxDxH)	23.6" x 21.7" x 37.8"
Weight	88.2 lbs.
Power Consumption	48W

PS430 Paper Bank

Capacity	Dual 500-Sheet Paper Trays
Paper Size	8.5" x 11" - 11" x 17" User adjustable
Paper Weight	20 - 28 lb.
Dimensions (WxDxH)	21.3" x 23.7" x 10.7"
Weight	55.2 lbs.

Controller Options

Printer Hard Disk Drive Type 4510 (Font Download, Spool, Sample Print, Locked Print)	
Type	E-IDE
Capacity	10 GB
RAM DIMMs, SDRAM	
Capacity	64 MB standard 64, 128 and 256 MB option with one slot

IEEE 1394 Type 4510

Interface	IEEE 1394 (6 pin)
Number of Ports	2
Data Transmission Speed	400/200/100 mbps

IEEE 1394 Interface is a New Standard Serial Interface for Multimedia products and PC peripherals including printing devices.

Major Features of IEEE 1394

High Speed Data Transmission	400/200/100 mbps
Easy Connection	Hot Plug and Play
Easy Handling	Thin Cable (.2 in./dia.)

