

# Gestetner

*High Speed and Outstanding Image Quality*



FULL COLOR LASER PRINTER

# DSc38FD

# Gestetner and EFI® have partnered to combine their expertise in high-speed printing and print controller technology.



THE NEW GESTETNER DSc38FD COLOR LASER PRINTER COMBINES GESTETNER'S HIGH-SPEED PRINTING TECHNOLOGY WITH EFI'S FIERY PRINT CONTROLLER. IMAGINE, COLOR PRINTS AT AN AMAZING 28 PPM AND BLACK & WHITE DOCUMENTS AT 38 PPM – EVEN WHEN PRINTING DUPLEX! WITH TRUE 1,200 x 1,200 DPI RESOLUTION AND AN EMBEDDED EFI FIERY PRINT CONTROLLER, THE DSc38FD PRINTS VIBRANT COLOR IMAGES WITH DETAIL, GIVING YOU THE ABILITY TO CREATE SPECTACULAR COLOR PRESENTATIONS, IMPRESSIVE SALES LITERATURE, EXCITING NEWSLETTERS, AND MORE.

FOR DSc38FD USERS, THE WAITING GAME IS OVER. IT FEATURES FIRST PRINT OUT TIMES OF LESS THAN 12 SECONDS FOR COLOR AND 9 SECONDS FOR BLACK & WHITE, ALONG WITH RIP-WHILE-PRINT® CAPABILITY TO MAXIMIZE THROUGHPUT ON SEQUENTIAL JOBS.

## EXCEEDING THE PERFORMANCE STANDARD

The DSc38FD sets a new standard in printing performance for the office for both color and black & white document production...all at a low cost of ownership.

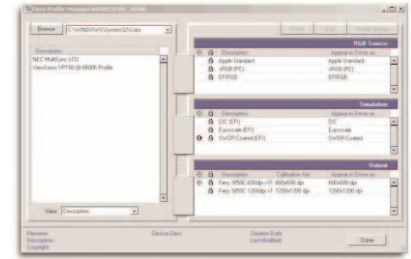
- The DSc38FD uses a tandem drum printing system that images each color successively in a single pass, maximizing printing output.

- The DSc38FD doesn't even slow down when the documents are finished on-line with the optional SR770 Finisher. Collating, stapling, and punching (optional) are performed effortlessly.

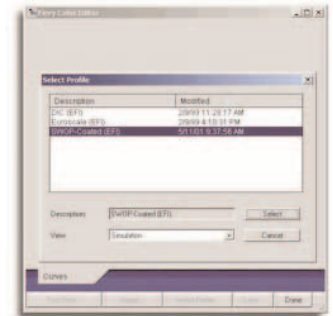
- With a 700 MHz CPU, even the most complex graphics are processed in minimal time, while the Fiery driven RIP-While-Print and continuous print technologies optimize the workflow to drive the DSc38FD at its rated speed.



EFI Colorwise Pro Tools (main window)



Fiery Profile Manager



Color Editor

## QUALITY COLOR IMAGING WITHOUT THE HIGH COST

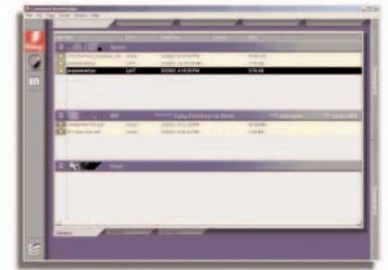
Now not only can you create your documents internally, but produce them with a professional look as well.

- Eliminate costly and time-consuming outsourcing for your color printing needs. Take control of the entire creative and production process.

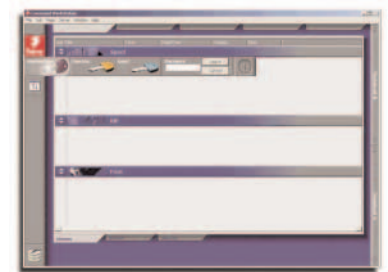
- Greater color control is available through Fiery ColorWise Pro Tools™, which enables you to fine-tune the color output to match the application requirements.

## CONVENIENT PAPER HANDLING AND FINISHING

Any printing speed advantages of a printer can be lost without ample paper supply and document finishing. Replenishing paper or assembling and stapling documents together disrupts production and requires manual interaction.



Command Workstation (main window)



Command Workstation (security)

With the DSc38FD, productivity is based on document throughput – not just printed pages.

- The standard DSc38FD comes with auto duplexing and a capacity of 1,100 sheets, which can be easily increased to 3,100 sheets through five trays, reducing production interruptions for paper loading.
- Choice of either a 4-bin Mailbox or a 2,500-sheet document finisher makes it easy to separate documents for immediate distribution.
- The DSc38FD prints on a range of media and paper types, which include 90 lb. index, OHP transparencies, and labels, in sizes up to 12 x 18 inches.

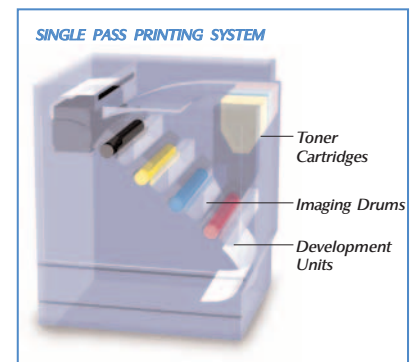
**EFI FIERY DRIVEN® MEANS MORE THAN SPEED**

EFI® is the leading developer of print controllers for color imaging applications. The Fiery® Print Controller is optimized for performance and encompasses a range of tools and utilities that provide color control, job management, and seamless networking.

- EFI Fiery ColorWise® provides the ability to fine tune the color output to simulate different offset press standards like SWOP, Euroscale, or DIC. Color consistency and predictability can't be any easier than with Fiery ColorWise.
- Optional EFI Command WorkStation (CWS) is a simple-to-use job management tool that helps you manage one or more DSc38FDs on a network. Not only can you monitor the printing activity, you can prioritize the printing queue and resend jobs for printing without re-RIPing.

- Remote job management is available with EFI Fiery WebTools™, which can be accessed through any standard Java-enabled Web-browser. Similar to Command WorkStation, Fiery WebTools enables you to manage, monitor, and manipulate the print job queue on the DSc38FD.
- Network connectivity could not be simpler than with EFI Fiery NetWise™, which supports all popular network environments.
- The optional EFI Velocity workflow software enables you to coordinate the printing capacity of multiple networked DSc38FDs. A request for multiple copies of a single document can be printed through two or more DSc38FDs. Thus, two DSc38FDs have the virtual printing capacity of 56 ppm in color and 76 ppm in black & white.

The DSc38FD is based on proven technologies: Gestetner's high-speed tandem drum imaging technology and EFI's Fiery Print Controller. The result is a document production system optimized for performance and color quality. There is no longer any reason not to have color in-house. The DSc38FD makes it all possible.



Contact your authorized Gestetner Dealer for more information.

# DSc38FD

## FULL COLOR LASER PRINTER

### General Specifications

Configuration Technology	Desktop Laser beam scanning, electro-photographic printing and dual toner development
Resolution	True 1,200 x 1,200 dpi, 600 x 600 dpi
Printing Speed	38 ppm (black & white), 28 ppm (full color) @ 600 x 600 dpi; 28 ppm (black & white), 14 ppm (full color) @ 1200 x 1200 dpi Thick Paper/Transparencies: 10 ppm (black & white/full color) Duplex 38 ipm in black & white, 28 ipm in color Stapling/Punching: Same as the simplex printing speed
First Print Speed	Less than 12 seconds full color; Less than 9 seconds black & white
Input Capacity	Bypass Tray: 100-sheet 2 x 500 sheets
Output Capacity	Up to 3,100 sheet total capacity Standard: 500 sheets, plus 100-sheet Face-up output tray Optional 4-Bin Mailbox: 125 sheets x 4 bins Optional Finisher: 2,500 sheets
Paper Sizes	Standard Trays: 8.5" x 11", 8.5" x 14", 11" x 17", 7.25" x 10.5", 8" x 13", 8.5" x 13", 8.25" x 13", A5, A4, A3
Paper Weight	Bypass tray: Width 4.0" to 12.0"; Length 5.8" to 18.0" Trays: 16 lb. to 28 lb. Bond
Paper Types	Bypass tray: 16 lb. Bond to 90 lb. Index Plain paper, Laser-printer qualified transparencies, card stock, and labels – Bypass tray and Face-Up output tray only
Duplex Printing	Standard
Power Consumption	1,550W or less Energy Saver Mode: 45W or less
Warm-up Time	Less than 190 seconds
Dimensions (W x D x H)	26.2" x 26.7" x 34.3"
Weight	198 lbs.

### EFI® Fiery Print Controller Specifications

CPU	Intel Pentium III 700 MHz
Printer Languages	PCL5c emulation, Adobe PostScript 3
Fonts	For PS: 136 Adobe Type 1 fonts For PCL: 35 Intellifonts, 10 TrueType fonts, 1 bitmap font
Memory	128 MB RAM; expansion up to 256 MB
Interface	10/100 Base TX Ethernet (RJ45 port) IEEE1284 Parallel Type C
Network Protocols	Simultaneous auto-sensing and auto-switching protocols: TCP/IP, IPX/SPX, AppleTalk, SMB, LPD/LPR
Driver	PCL5c: Windows 95/98/Me/NT 4.0/2000/XP PS: Windows 95/98/Me/NT 4.0/2000/XP, Mac 8.6 or later
Hard Disk Drive	10 GB
Print Job Management Utility	Fiery WebTools™ (includes Fiery WebDownloader™) SmartNetMonitor Ver. 5.xx
Color Management	ColorWise Pro Tools™ (includes Fiery Print Calibrator™) ICM profile, ICC profile download PANTONE, and CMYK controls Densitometer compatible
Other Printing Features	Secure Print Check & Print

### Controller Options

Memory Options	PC100 compliant SDRAM (max. of 256 MB total) 128 MB
----------------	--

### Paper Handling Options

Paper Tray Type 3800C 500 sheets x 1 tray	
Paper Size	Same as standard trays
Paper Weight	Same as standard trays
Paper Capacity	500 sheets Note: 500 x 1, 500 x 2, and LCT cannot be simultaneously installed.
Paper Tray Type 3800C 500 sheets x 2 trays	
Paper Size	Same as standard trays
Paper Weight	Same as standard trays
Paper Capacity	1,000 sheets
Large Capacity Tray Type PS470	
Paper Size	8 1/2" x 11"
Paper Weight	Same as standard trays
Paper Capacity	2,000 sheets
SR770 Finisher	
Stack Capacity	Lower Staple Tray: 2,000 sheets (8.5" x 11", 20 lb.) or 750 sheets (11" x 17", 20 lb.) Upper tray: 500 sheets (8.5" x 11", 20 lb.) or 250 sheets (11" x 17", 20 lb.) 50 sheets (8 1/2" x 11", 20 lb.) or 30 sheets (11" x 17", 20 lb.)
Staple Capacity	8 1/2" x 11", 8.5" x 14", 11" x 17", A3, A4 17 to 23 lb. bond Note: Cannot be simultaneously installed with 4-Bin Mailbox. Requires installation of additional paper input options.
Staple Paper Size	8 1/2" x 11", 8.5" x 14", 11" x 17", A3, A4
Staple Paper Weight	17 to 23 lb. bond Note: Cannot be simultaneously installed with 4-Bin Mailbox. Requires installation of additional paper input options.
Punch Kit Type 1045	
Number of Holes	Two or Three
Paper Size	8.5" x 11", 11" x 17", A3, A4
Paper Weight	16 to 28 lb. bond
4-Bin Mailbox	
Stack Capacity	125 sheets per bin
Paper Size	Same as standard trays
Paper Weight	16 to 28 lb. bond Note: Cannot be simultaneously installed with SR770 Finisher.

### Software Options

EFI Command WorkStation™

### Finisher (SR860) with Saddle Stitch

Black Toner @ Approx. 20,000 pgs
Cyan Toner @ Approx. 10,000 pgs
Magenta Toner @ Approx. 10,000 pgs
Yellow Toner @ Approx. 10,000 pgs
Black Image Drum
Color Image Drums
Black Development Unit
Color Development Units
Waste Toner Bottle
Fusing Unit
Fuser Oil Cartridge
Staple Set Cartridge @ 5,000 shots
Staple Refills @ 5,000 x 3 shots

## Gestetner

Gestetner Stamford, Connecticut 06904  
Product specifications subject to change without notice.  
All other trademarks are the property of their respective owners.  
Printed in U.S.A. (G1716) 25M 7/02

## Velocity™



Our earth,  
Our tomorrow



## Electronics FOR Imaging™

## PANTONE®



Adobe® PostScript® 3™



Certification No. FM-23772