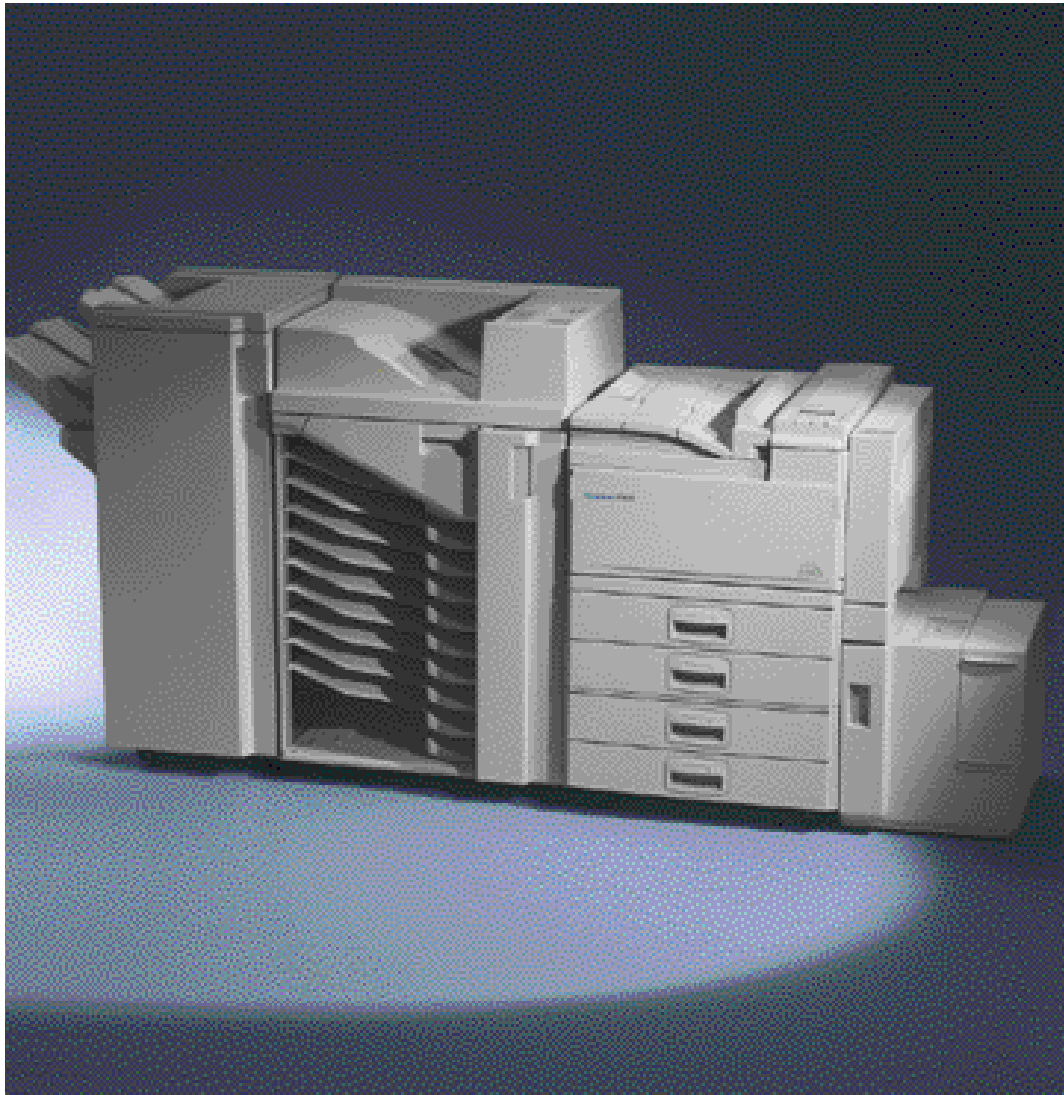


Gestetner

Mid/High-Volume Workgroup Printing



NETWORK LASER PRINTER

P7045



Novell.





So much work...so little time...help!

IF THAT'S THE PACE OF WORK IN YOUR OFFICE, THEN YOU NEED THE GESTETNER P7045 NETWORK PRINTER. ENGINEERED FOR THE NEEDS OF THE MID-TO HIGH-VOLUME WORKGROUP, THE P7045 SKILLFULLY BLENDS SUPER-FAST PRINT SPEEDS, COMPREHENSIVE NETWORK SUPPORT, SUPERIOR PAPER HANDLING AND FINISHING – ALL INTO AN EASY-TO-INSTALL, USE AND MANAGE DEPARTMENTAL PRINTING SYSTEM. YOU'LL BE AMAZED AT HOW YOU EVER GOT ALONG WITHOUT IT.

WHILE SPEED ISN'T EVERYTHING...

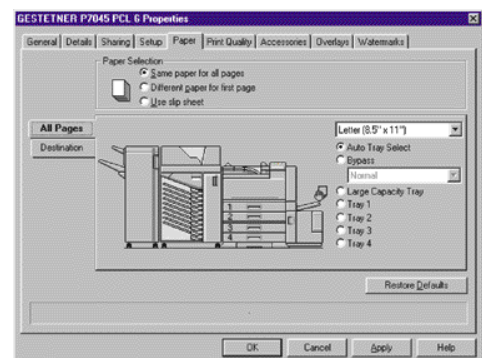
It is a clear performance indicator. And, at an impressive 45 pages per minute, the Gestetner P7045 is optimized for maximum document throughput and superior image quality.

- Multiple Original Set Printing minimizes network traffic and increases productivity. Print jobs are sent across the network just one time, then output at full engine speed.
- Professional images are a given, courtesy of the P7045's 600 dpi resolution. You're assured of consistent results no matter how complex your documents are.

WHEN THE GOING GETS TOUGH

...the Gestetner P7045 really cranks up – easily meeting the demands of those peak volume periods that can leave less capable printers in the dust.

- Up to 3,550 sheets of paper can be on-line at any given time, which is especially convenient for those long print runs. You'll spend more time actually printing and less time reloading paper.
- With up to six different paper sources available, printing on a variety of paper stocks and sizes – including letter, legal and ledger – couldn't be easier. And, the P7045's Automatic Tray Selection feature takes the guesswork out of printing – allowing you to select both paper size and type through the print driver.



The Gestetner P7045 can meet the mid- to high-volume printing requirements of your department or workgroup.



- Cut your file sizes in half with standard Automatic Stackless Duplexing. Print long documents or Web pages while saving paper and reducing hard copy filing space.

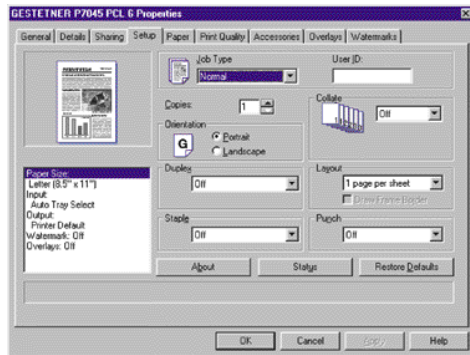
- See it before you commit. Use the P7045's Proof Printing feature to print just one set of a job that requires multiple, finished sets. Check it and then release the rest of the job right from the P7045's Control Panel. You'll reduce paper and consumable waste and eliminate unnecessary trips between the P7045 and your desktop.

A dedicated Mailbox option lets you direct print output for up to nine individuals, or departments, to dedicated mailboxes – eliminating the need to shuffle through stacks of paper looking for specific print jobs.

For added flexibility, the mailbox option can also be installed with the P7045's 3,000 sheet Finisher option – increasing your total output capacity to an incredible 4,900 sheets.

work – including both general office and graphic arts users. A wide selection of Windows® compatible and Adobe Type 1 fonts is standard and an optional 1.6 GB hard disk can be added for local font storage.

Clients receive constant feedback throughout the printing process simply by glancing at an icon located on the Windows® Task Bar. Plus, Net Vision MAP (Management Access Program) software allows you to view all SNMP-based printers, regardless of the manufacturer, so that you can easily monitor and adjust usage loads.



FINISHING THAT STARTS WITH A CLICK

...and ends at one of two optional finishers. The P7045 print drivers allow you to direct print output with precision and make all finishing selections – including stapling in a variety of positions and 3-hole punching – without ever leaving your desk.

READY FOR YOUR NETWORK

...right out of the box with a standard 10/100BaseT Ethernet interface, PCL 6 and Adobe PostScript 3. Providing support for TCP/IP, IPX/SPX and AppleTalk protocols and operating at 100MHz, the Gestetner P7045 will capably handle the needs of everyone on your net-

NO MANAGEMENT EXPERIENCE REQUIRED

...thanks to proprietary Gestetner Net Vision software. With our embedded Web technology, you can use your Web browser to install, configure and manage the P7045 on your network. Administrators can change printer settings and check printer status.



NETWORK OUTPUT SOLUTIONS AT WORK

At Gestetner, we understand that any network output system effects your entire organization. That's why Gestetner consultants have been trained to analyze the flow of information in your company, then recommend the most efficient and cost-effective network output strategy for your needs. And, whether the need is for black and white, color, multifunctional or a combination of all three, Gestetner has a solution that's right for you.

For more information, contact your authorized Gestetner dealer.

www.gestetnerusa.com

P7045

NETWORK LASER PRINTER

Engine

Configuration Technology	Desk Top Laser Beam Scanning and Electrophotographic Printing
Toner	Dry, Dual Component
Resolution	600 dpi with Edge Smoothing
Warm-Up Time	100 Seconds
Continuous Print Speed	45 PPM (Letter Size)
First Print Speed	6 Seconds
Hard Disk Drive	1.7 GB
Operation Panel	LCD, 16 Characters x 2 Lines
Dimensions (WxDxH)	26.2" x 25.2" x 22.4" (Includes Duplex Unit and Bypass Tray)
Weight	137 lbs.

Paper Handling

Input Capacity (Standard)	Dual 500 Sheet Front Loading User Adjustable Trays 50 Sheet Bypass
Input Capacity (Optional)	Dual 500 Sheet Front Loading User Adjustable Trays
Input Capacity (Maximum)	3,550 Sheets/6 Sources
Output Capacity (Standard)	500 Sheets (with Bridge Unit 250 Sheets)
Output Capacity (Optional)	9 Bin Mailbox - 100 Sheets per Bin with 500 Sheet Proof Tray; 1,000 Sheet Finisher; 3,000 Sheet Finisher
Output Capacity (Maximum)	4,900 Sheets
Paper Size	5.5" x 8.5" - 11" x 17"
Paper Weight	Paper Trays and LCT 20 - 28 lb. Bypass Tray 14 - 42 lb. Duplex Tray 17 - 28 lb.
Automatic Duplex Printing	Vertical, Stackless
Continuous Duplex Print Speed	36 IPM (Images Per Minute - Letter)

Controller Specifications

CPU	PowerPC603e, 100 MHz RISC Processor
Interface	IEEE 1284 ECP, Nibble Compatible
Network Interface	NIB 450-E on PSIO, 100/10BaseT
RAM Memory Capacity	Standard 8 MB DRAM, 2 additional slots for 8, 16 or 32 DRAM (8 MB + 32 x 2 MB)
Hard Disk Drive	Optional 1.6 GB (Font Storage)
Standard PDL	PCL6 (PCL5e & XL); Adobe PostScript 3
Resolution	PCL5e: 600/300 dpi; PCL6: 600 dpi; PS3: 600/400 dpi
Resolution Enhancement	Edge Smoothing
Fonts	35 Intellifont, 10 TrueType Fonts, 1 Bitmap Font, 31 Fonts can be downloaded by Agfa Font Manager), 136 Adobe Type 1 Fonts
Driver	PCL5e - Windows 3.1/95/98, NT 4.0 PCL6 - Windows 3.1/95/98, NT 4.0 Adobe PostScript 3 - Windows 3.1/95/98, NT 4.0 and Macintosh OS 7.1 or higher
Utilities	Net Vision, Agfa Font Manager

Network Interface Board Type 450-E

Topology	Ethernet 10/100BaseT
Network Interface Connector	RJ-45
Print Controller Connector	PSIO
Network Protocols	TCP/IP, IPX/SPX, EtherTalk
Network Operating Systems	Novell NetWare - 2.15, 3.x; 4.x with Bindery Emulation; 4.x in Native (NDS) Mode. TCP/IP - Using LPR: Windows 3.x/95/98; Windows NT 3.5x/4.0. Peer-to-Peer - Windows IP and IPX Peer-to-Peer Printing; Windows 95/98, NT 4.0 AppleTalk - Using Ethertalk protocol MAP (Management Access Program) for Windows 95/98, NT; IPX Peer-to-Peer Printing for Windows 95/98, NT; IP Peer-to-Peer Printing for Windows 95/98, NT; BootP Lite (16-bit) and NTBootP (32-bit) NetWare Setup
Utilities	

SR730 Finisher

Type	Floor Standing
Shift Tray	
Paper Size	5.5" x 8.5" - 11" x 17"
Paper Weight	14 - 42 lbs.
Paper Capacity	
Without Hole Punch	3,000 sheets 8.5" x 11" 1,500 sheets 8.5" x 14", 11" x 17"
With Hole Punch	2,500 sheets 8.5" x 11" 1,500 sheets 8.5" x 14", 11" x 17"
Proof Tray	
Paper Sizes	5.5" x 8.5" - 11" x 17"
Paper Weight	14 - 42 lbs.
Paper Capacity	
Without Hole Punch	250 sheets 8.5" x 11" 50 sheets 8.5" x 14", 11" x 17"
With Hole Punch	200 sheets 8.5" x 11" 50 sheets 8.5" x 14", 11" x 17"
Staple Capacity	
Without Hole Punch	50 sheets 8.5" x 11" 30 sheets 8.5" x 14", 11" x 17"
With Hole Punch	40 sheets 8.5" x 11" 25 sheets 8.5" x 14", 11" x 17"
Staple Paper Size	8.5" x 11" - 11" x 17"
Staple Paper Weight	17 - 20 lbs.
Staple Position	1 staple - 3 positions 2 staples - 1 position
Dimensions (WxDxH)	24.7" x 21.5" x 37.8"
Weight	99.3 lbs.

SR720 Finisher

Type	Hanging
Stack Capacity	1,000 sheets 8.5" x 11" 500 sheets 8.5" x 14", 11" x 17"
Paper Sizes	5.5" x 8.5" - 11" x 17"
Paper Weight	14 - 42 lbs.
Staple Capacity	30 sheets 8.5" x 11" & smaller 20 sheets 8.5" x 14", 11" x 17"
Staple Paper Size	8.5" x 11", 8.5" x 14", 11" x 17"
Staple Position	One, upper left
Dimensions (WxDxH)	22.4" x 20.5" x 24.6"
Weight	46.3 lbs.

CS360 9 Bin Addressable Mailbox

Number of Bins	9 bins and 1 Proof Tray
Paper Size	8.5" x 11" - 11" x 17" per bin 5.5" x 8.5" - 11" x 17" Proof Tray
Paper Capacity	100 sheets per bin 500 sheets Proof Tray
Paper Weight	16-24 lbs. per bin 14 - 42 lbs. Proof Tray
Stapling	Not available
Dimensions (WxDxH)	23.6" x 21.7" x 37.8"
Weight	88.2 lbs.
Power Consumption	48W

PS430 Paper Bank

Capacity	Dual 500 sheet Paper Trays
Paper Size	5.5" x 11" - 11" x 17". User adjustable
Paper Weight	20-28 lb.
Dimensions (WxDxH)	21.3" x 23.7" x 10.7"
Weight	55.2 lbs.

RT36 Large Capacity Tray

Capacity	1,500 sheets
Paper Size	11" x 8.5"
Paper Weight	20-28 lb.
Dimensions (WxDxH)	15.4" x 19.7" x 15.4"
Weight	37.5 lbs.

Controller Options

<i>Printer Hard Disk Drive Type 450 (Font Download)</i>	
Type	E-IDE
Capacity	1.6 GB
RAM SIMMS	
Type	EDO DRAM 72 Pin, 64 Mbit
Speed	60ns or faster
Capacity	8 MB, 16 MB, 32 MB (64 MB is not supported)

Gestetner

Gestetner Stamford, Connecticut 06904 Product specifications subject to change without notice.
All other trademarks are the property of their respective owners. Printed in U.S.A. (G1186) 50M 11/99

