

Gestetner

Productive and affordable 1200 dpi output



L A S E R P R I N T E R

P7014

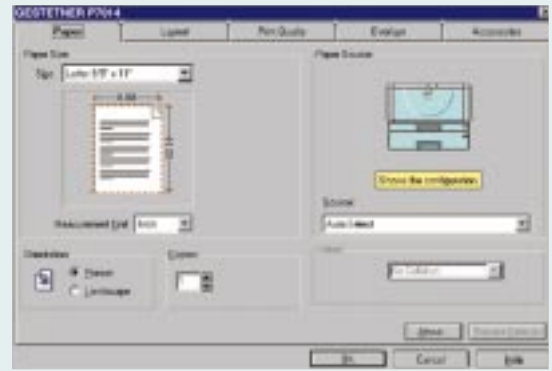


P7014

1200 DPI
LASER PRINTER



Choose Gestetner for
all your output solutions.



MORE THAN A PRINTER

The Gestetner P7014 is an essential element of your total output strategy. As a personal printer, an additional printer for a small workgroup, or a shared printer for a small business – the P7014 is the most productive and affordable choice you can make.

PRINT MORE, MAINTAIN LESS

The P7014's All-In-One Cartridge makes consumable replacement easy and reduces consumable inventory – enhancing your productivity and contributing to the P7014's overall low cost of ownership. A compact footprint and full front design ensure that the Gestetner P7014 will fit into even the tightest space. And, front access means that you can do everything – from adding paper to replacing the All-In-One cartridge – from the front of the printer. Proprietary Gestetner Net Vision Software makes it easy to install and monitor your Gestetner P7014, or any Gestetner connected system, on your network – whether it's a LAN or Peer-to-Peer. Net Vision allows you to “see” how your P7014 is performing via an icon on the Windows® Task Bar.

PLUG INTO PERFORMANCE

A powerful 133 MHz RISC processor combines with 14 PPM print speeds and up to 1200 dpi output for maximum efficiency and stellar image quality. An optional Network Interface Card supports Fast Ethernet LAN connections and provides seamless integration with today's most popular network environments.

PCL6 and PostScript 2 mean that you'll enjoy out-of-the-box compatibility with most business software. Auto Emulation Switching takes the guesswork out of printing – just select the correct print driver and the P7014 does the rest.

The P7014 can accommodate up to 850 sheets of paper from three sources – a real bonus for small workgroups or offices. You can also add the optional Envelope Feeder, ensuring that the outside of your correspondence looks as good as the inside.

AN EASY CHOICE

Selecting the right network output system doesn't have to be hard. Especially when you can turn to Gestetner for all of your network output needs. Black and white...color...multifunctional...or a combination of all three. For more information, contact your authorized Gestetner sales location.

Printer Specifications

Technology	Laser
Resolution	1200/600/300 dpi
Throughput	14 ppm letter
Weight	26.46 lbs.
Dimensions (WxDxH)	14.2" x 16.6" x 10.6"
Input Capacity	250 sheets + 100 sheet Multi-Tray (8.5" x 14" max.); 1 optional 500 sheet 8 1/2" x 11" Max. Tray; Optional envelope feeder installed in optional (Ltr.) paper tray
Output Capacity	250 sheets
Paper Size	3.88" x 5.83" – 8.5" x 14"
Paper Weight	Standard/Optional Trays 16 - 24 lbs. Standard Multi Tray 14 - 42 lbs.
Warm-up Time	39 seconds or less

Energy Star Tier 2 Specifications

Rating Power Specifications	120V, 60 Hz
Emi	FCC Class B, DOC
Sound Level	Standby - 48 db Operating - 59 db
Safety Standard	UL1950, CSA950

Controller Specifications

Printer Language	PCL5e, PCL6 & PS Level 2
Fonts	35 Intellifont, 10 TrueType Fonts, 1 Bitmap Font, 35 Type 1 Fonts
Memory	8 MB standard, additional 8/16/32 to 40 maximum
Hard Disk	Optional 1.6 GB
CPU	NEC R4300 133 Mz RISC Processor
Driver	PCL5e & PCL6: for Win 3.1x/95/98, Win NT 4.0 PS Level 2 PPD file: for Win 95/98, NT 4.0 & MAC OS 7.5 or later
Interface	Standard Bi-directional IEEE1284; Optional RS232C; Optional Network Interface Card 10 BaseT/100 BaseTX
Network Protocol	Optional NIC supports TCP/IP, IPX/SPX, AppleTalk
Utility Management	Net Vision included for Win 95/98 & Win NT 4.0; Controller supports SNMP - MIBII & industry standard MIB (RFC1759)

www.gestetnerusa.com

Gestetner



Gestetner Stamford, Connecticut 06904 Product specifications subject to change without notice. All other trademarks are the property of their respective owners. Printed in U.S.A. (G1138) 50M 5/99