

Gestetner

Versatile Digital Imaging Systems



D I G I T A L I M A G I N G S Y S T E M S

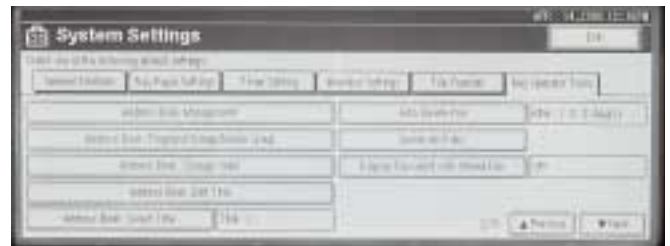
6002/7502



Quickly access all of the 6002/7502's capabilities – including the Document Server, Network Scanning, System Settings and User Tools – via a large, intelligently designed LCD Touch Panel Display.

Got A Paperless Office? We Didn't Think So...

THAT'S WHY YOU NEED THE GESTETNER 6002 AND 7502! DESIGNED TO MEET THE CHALLENGES OF HIGH-VOLUME PRODUCTION ENVIRONMENTS – INCLUDING PRINT-FOR-PAY, CENTRAL REPRODUCTION DEPARTMENTS AND FACILITIES MANAGEMENT – THE 6002 AND 7502 WILL GET YOU THROUGH THE TOUGHEST DAYS. COMBINING HIGH-SPEED PRINTING/COPYING, TRUE 1200 x 1200 DPI RESOLUTION, PRODUCTIVE PAPER-HANDLING AND INTELLIGENT CONNECTIVITY OPTIONS, THE 6002 AND 7502 EFFICIENTLY HANDLE THEIR BUSINESS WHILE YOU TAKE CARE OF YOURS.



Easily create professional quality finished output.



A variety of staple positions



Saddle-stitched booklets



2- or 3-hole punch capability



Tabbed pages

PRINT-ON-DEMAND... IT'S EASY!

The 6002 and 7502 excel at managing hardcopy and electronic files, thanks to the unique Document Server capability. Store up to 10,000 pages in the generous 40 GB Hard Disk Drive and then manage them using DeskTop-Binder software, which allows you to merge, sort and edit stored files with ease. With Document Server and DeskTop-Binder, daily document management tasks become models of efficiency. For example:

Documents that you print or copy on a regular basis. Simply transmit electronic files over the LAN – or scan hardcopy – to the Document Server, which eliminates the need to re-scan or re-transmit every time.

Documents that are highly confidential. Give those documents a private code and the Document Server keeps them that way until you're ready to get them.

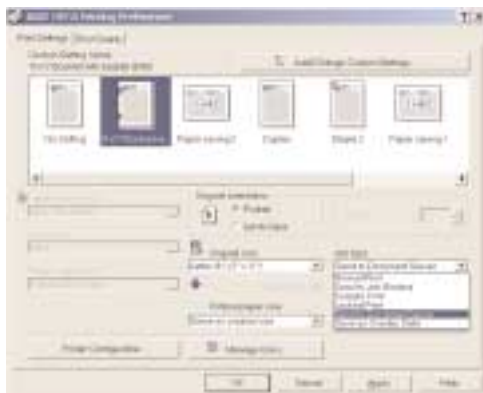
Documents that are a mix of electronic files and hardcopy. Using the capabilities of the Document Server, you can merge stored documents into a single file – regardless of whether the documents originated as scanned hardcopy or electronic files.

CONNECTIONS THAT MAKE SENSE

When it's time to network your 6002/7502, you'll be amazed at just how uncomplicated the process is. An exclusive design feature – Next Generation Technology – eliminates the need to install costly controller boards for the optional printer/scanner modules.

*If it's on the Control Panel,
it's on the Desktop!*

With support for a wide variety of network platforms, the 6002 and 7502 raise produc-



With RPCS and DeskTopBinder, it's easy to create custom output icons – complete with media, finishing instructions and output instructions.



Expertly customize any document! Simply choose from a wide variety of pre-set Watermarks – or create your own – and instantly give your documents a unique look.

Advanced paper handling and connectivity options.



A revolutionary document feeder scans both sides of an original in a single pass – dramatically enhancing reliability and productivity.



If you've got a busy output environment, you'll want to check out the optional 4,000 sheet Large Capacity Tray. Immediately increase your paper supply to an astonishing 8,300 sheets from five sources.



Easily accommodate a variety of paper sizes along with specialty media like recycled paper and tab sheets.

tion printing to new levels. And, if a feature is available to a walk-up user – Covers, Tabs, Booklets, Chapters, 11" x 17", Page Numbers, User Stamps, Staples and Hole Punching – you can access it via the desktop.

You won't find a better PDL than Refined Print Command Stream (RPCS) for output productivity. Designed for Windows users, RPCS enables users to make all output selections by clicking just once on a clearly identified

graphic icon. Plus, if you have specific document output requirements – such as the need to print 11" x 17" manuals with Saddle Stitching – simply create a custom icon to automate the job.

Real-Time, e-Document Delivery Service

More than ever, network scanning is the key to managing information in the high-volume environment. With the optional printer/scanner module, scan documents to e-mail – up to 2,000 programmed des-

tinations or addresses entered on the fly – and eliminate the need to print and then distribute them via fax, costly overnight services or snail-mail.

Manage scanned documents the smart way – with DeskTop-Binder Document Management Software. From your desk you'll quickly access and work with your documents – viewing them, combining different documents and formats into one and applying detailed finishing selections.

FIRST IMPRESSIONS COUNT...

That's why the 6002/7502 incorporates advanced imaging technology engineered to make every document look its best. True 1200 x 1200 dpi resolution combines with super-fine toner particles to provide razor-sharp copies or prints with exceptionally smooth and solid blacks.

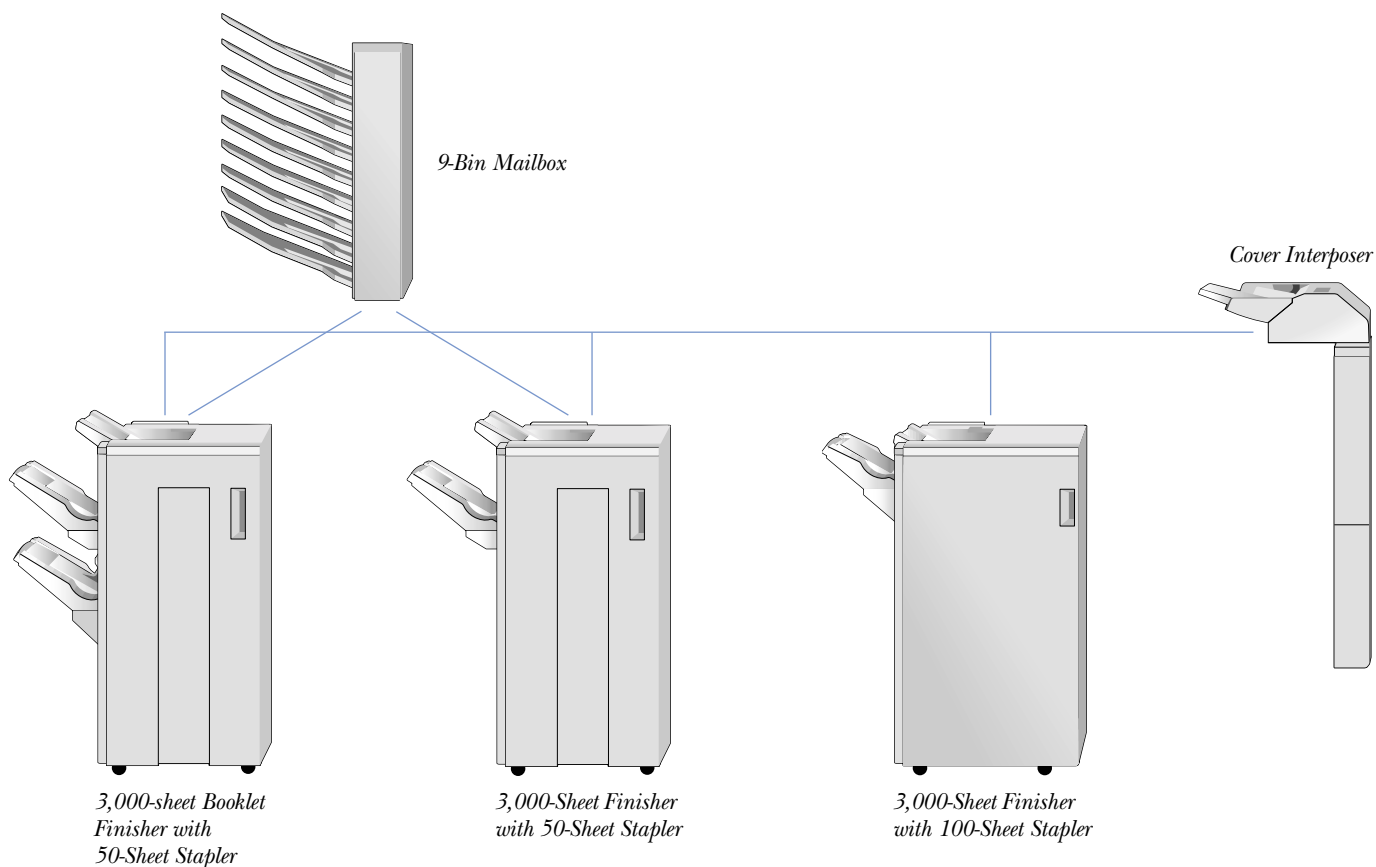


You decide which network connection is right for you – standard Ethernet NIC, or optional Wireless LAN, FireWire or USB – we have them all!



For uninterrupted printing or copying, you'll appreciate the Tandem Paper Tray with its generous 3,100 sheets of letter size paper. As soon as one side empties, the other automatically moves into position and continues working.

Choose from a variety of automatic finishing options.



A DESERVING FINISH

A wide variety of automatic finishing options – all of which offer a user-selectable two and three-hole punch option – optimize user productivity.

- Create completely finished newsletters, mailers, proposals, manuals or booklets with the versatile Saddle Stitch Finisher.
- Produce documents with Tabs, Cover, Chapters or Inserts using the 100-sheet, Multi-position Stapling Finisher.
- Make quick work of typical workgroup applications such as letters, reports, presentations, spreadsheets, etc. with the 50-sheet Multi-position Stapling Finisher.

To completely maximize output versatility, a top-mounted 9-Bin Addressable Mailbox –

available with the Saddle Stitch Finisher or the 50-sheet Multi-position Finisher – automatically separates print output while eliminating the floor space requirements of a side-mounting mailbox.

SEEING IS BELIEVING

Whether you're working with hardcopy in a walk-up production environment, electronic files in a busy networked environment, or both, the Gestetner 6002 and 7502 measure up to the most rigorous document management standards imaginable. But don't take our word for it...make the call to your authorized Gestetner sales location and see for yourself.

www.gestetnerusa.com



Add pre-printed color stock using the cover interposer and give your documents a totally custom look.

6002/7502

DIGITAL IMAGING SYSTEMS



Copier Specifications

| | |
|--------------------------|--|
| Configuration | Console |
| Printing Process | Four laser beam scanning and electro-photographic printing |
| Copy Resolution | 1200 dpi |
| Gray Scale | Scanning: 256 levels |
| Standard Memory Capacity | RAM 128 MB/40 GB HDD |
| Document Server | Storage up to 10,000 pages |
| Continuous Copy Speed | 60/75 cpm (8.5" x 11") |
| Copy Size | 5.5" x 8.5" - 11" x 17" |
| First Copy | Less than 3.5 seconds |
| Originals | Sheet/Book/3 dimensional |
| Max. Original Size | 11" x 17" |
| Min. Original Size | 5.5" x 8.5" |
| Warm-up Time | Less than 300 seconds from off mode |
| | 25 seconds from low power mode |
| Multiple Copying | Up to 999 |
| Auto Duplex | Unlimited |
| Standard Paper Capacity | 1,550 x 2 Tandem Tray + 550 x 2 Trays + 100 sheet Bypass |
| Optional Paper Capacity | 4,000 sheet LCT (total capacity 8,300) |
| Output Tray Capacity | |
| 500 sheets | 8.5" x 11"/8.5" x 14" |
| 250 sheets | All other sizes |
| Zoom Range | 25% to 400% in 1% steps |
| Enlargement | 121%, 129%, 155%, 200%, 400% |
| Reduction | 93%, 85%, 78%, 73%, 65%, 50% |
| Copy Paper Weight | 14 - 34 lb. Bond (Std. Trays) |
| | 14 - 43 lb. Bond/110 lb. Index (Bypass Feed) |
| | 17 - 34 lb. Bond (Duplex) |
| Dimensions (WxDxH) | 28" x 30" x 47" (includes ARDF) |
| Weight | Less than 200 Kg |
| Power Source | 120V, 60Hz, 20A |

Standard Accessories

| | |
|-------------------------|--|
| Document Feeder | |
| Scanning | Standard duplex one pass |
| Original Size | 5.5" x 8.5" - 11" x 17" |
| Original Weight | 11 - 34 lb. Simplex/14 - 34 lb. Duplex |
| Copying Speed | 60/75 OPM |
| Original Table Capacity | 100 sheets |
| Original Set | Face Up |
| Original Feed | Automatic Feed |

Optional Accessories

| | |
|-----------------------------------|-----------------------|
| Large Capacity Tray (RT43) | |
| Paper Size | 8.5" x 11" |
| Paper Capacity | 4,000 sheets |
| Paper Weight | 14 - 34 lb. |
| Dimensions (WxDxH) | 12.4" x 18.1" x 25.9" |
| Weight | 44 lbs. |

Printer DIMM Specifications

| | |
|-------------------------|--|
| Print Speed | 60/75 PPM |
| CPU | RM7000A - 375 MHz |
| Interface | Standard - Parallel IEEE1284, Ethernet NIC Optional - IEEE1394, Wireless LAN, USB 2.0 |
| Network Protocol | TCP/IP, IPX/SPX, NetBEUI, AppleTalk |
| Memory Capacity | Required 256 MB (up to 384 MB) |
| Printer Hard Disk Drive | 40 GB (Shared with Copier) |
| Language | RPCS, PCL5e/PCL6 (Standard) Adobe PostScript 3 (Optional) |
| Print Resolution | Up to 1200 dpi |
| Drivers for PCL 6 | Windows 95/98, Me, NT4.0, Windows 2000, XP |
| Drivers for PS3 | Windows 95/98, Me, NT4.0, Windows 2000, XP, Macintosh, UNIX |
| Utility | SmartNetMonitor |

Printer/Scanner DIMM Specifications

Same as Printer DIMM Specifications plus the following:

| | |
|------------------|---|
| Scan Speed | 75 SPM |
| Image Resolution | 100 - 600 dpi |
| File Format | PDF, TIFF, JPEG |
| Destination | Scan-to-File, Scan-to-Intray, Scan-to-Email |
| Scan Protocol | TCP/IP |

Finisher (SR840)

| | |
|-------------------|---|
| Type | Floor Standing |
| Shift Tray | |
| Stack Capacity | 3,000 sheets (8.5" x 11", 20 lb. Bond) w/o Punch 1,500 sheets (8.5" x 14" & larger, 20 lb. Bond) w/o Punch |
| Paper Weight | 14 lb. Bond - 110 lb. Index |
| Staple Capacity | 100 sheets (8.5" x 11" & smaller, 20 lb. Bond) 50 sheets (8.5" x 14" & larger, 20 lb. Bond) |
| Staple Paper Size | 8.5" x 11", 8.5" x 14", 11" x 17" |
| Staple Positions | Top, Bottom, Two Staples, Top Slant |
| Hole Punch | Optional 2 and 3 hole (user selectable) |
| Proof Tray | |
| Paper Sizes | 5.5" x 8.5" - 11" x 17" |
| Paper Weight | 14 lb. Bond - 110 lb. Index |
| Stack Capacity | 500 sheets (8.5" x 11" & smaller, 20 lb. Bond) 250 sheets (8.5" x 14" & larger, 20 lb. Bond) |

Finisher (SR850)

| | |
|-------------------|--|
| Type | Floor Standing |
| Shift Tray | |
| Stack Capacity | 3,000 sheets (8.5" x 11", 20 lb. Bond) w/o Punch 1,500 sheets (8.5" x 14" & larger, 20 lb. Bond) w/o Punch |
| Paper Weight | 14 lb. Bond - 110 lb. Index |
| Staple Capacity | 50 sheets (8.5" x 11" & smaller, 20 lb. Bond) with Punch 30 sheets (8.5" x 14" & larger, 20 lb. Bond) with Punch 30 sheets (8.5" x 11" & smaller, 20 lb. Bond) w/o Punch 30 sheets (mixed paper size) |
| Staple Paper Size | 8.5" x 11", 8.5" x 14", 11" x 17" |
| Staple Positions | Top, Bottom, Two Staples, Top Slant |
| Hole Punch | Optional 2 and 3 hole (user selectable) |
| Proof Tray | |
| Paper Sizes | 5.5" x 8.5" - 11" x 17" |
| Paper Weight | 14 lb. Bond - 90 lb. Index |
| Stack Capacity | 250 sheets (8.5" x 11" & smaller, 20 lb. Bond) w/o Punch 50 sheets (8.5" x 14" & larger, 20 lb. Bond) w/o Punch |

Finisher (SR860) with Saddle Stitch

| | |
|-------------------------------|---|
| Type | Floor Standing |
| Shift Tray | |
| Stack Capacity | 2,500 sheets (5.5" x 8.5" - 8.5" x 11", 20 lb. Bond) 1,250 sheets (8.5" x 14" & larger, 20 lb. Bond) |
| Paper Weight | 14 - 40 lb. Bond, 110 lb. Index |
| Staple Capacity | 50 sheets (8.5" x 11" & smaller) 30 sheets (8.5" x 14" & larger) 30 sheets (mixed paper sizes) |
| Staple Paper Size | 8.5" x 11", 8.5" x 14", 11" x 17" |
| Staple Positions | Top, Center, Two Staples |
| Hole Punch | Optional 2 and 3 hole (user selectable) |
| Proof Tray | |
| Paper Sizes | 5.5" x 8.5" - 11" x 17" |
| Paper Weight | 14 - 40 lb. Bond, 90 lb. Index |
| Stack Capacity | 250 sheets (5.5" x 8.5" - 8.5" x 11") 50 sheets (8.5" x 14" & larger) |
| Saddle Stitch Function | |
| Maximum Paper Size | 8.5" x 11" and 11" x 17" |
| Paper Weight | 17 - 28 lb. Bond (1 cover at 14 - 34 lb. Bond) |
| Staple Capacity | 15 sheets |
| Folding | Center Folding |

Other Options

| |
|---------------------------------|
| Copy Tray 1075 |
| 9-Bin Mailbox CS 390 |
| Tab Sheet Holder Type 1075 |
| 8.5" x 14" Tray Type 1075 |
| Cover Interposer Tray Type 1075 |
| Connect Copy |

Gestetner

Gestetner Stamford, Connecticut 06904
Product specifications subject to change without notice.
All other trademarks are the property of their respective owners.
Printed in U.S.A. (G1712) 75M 6/02



Our earth,
Our tomorrow

