

# *Gestetner*

DSm735  
DSm745

DIGITAL IMAGING  
SYSTEMS



The edge you need  
in a more competitive,  
faster-paced world.

# Gestetner



## Get More Done.

Gestetner Digital Imaging Systems combine the power of network connectivity, with printing, scanning and faxing—all from one location.

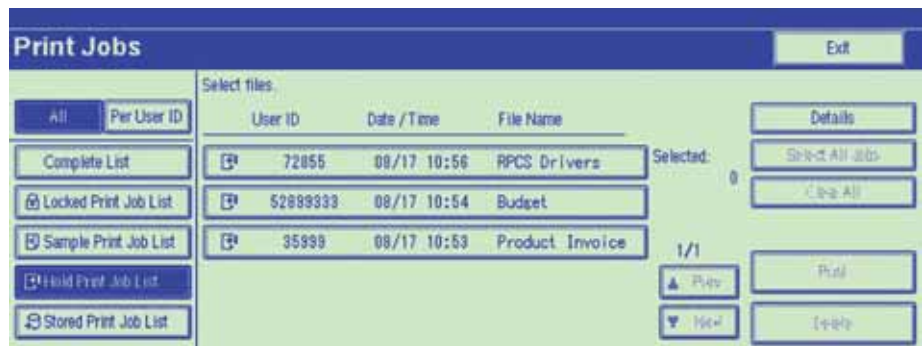
Based on your specific applications and requirements, we will provide the right solution to boost your productivity, save you money and sharpen your competitive edge.

For further information or a demonstration of this or other Gestetner Digital Imaging Systems, contact your authorized Gestetner dealer.

[www.gestetnerusa.com](http://www.gestetnerusa.com)

## Copying, network printing, scanning, faxing, security—they do it all.

Because of growing worldwide competition in nearly every area of business, you need to be faster and more efficient at every level of your organization. That includes your everyday documentation. Enter the Gestetner DSm735/DSm745 Series—helping to make your documents more impressive, more streamlined and more efficient. From copying, network printing, scanning and advanced faxing, to ensuring your document security, the Gestetner DSm735/DSm745 Series can help make your organization more competitive and cost efficient in this emerging new era of global competition.



The Hold/Locked/Stored Print function lets you hold your printed documents securely in the device until you're ready to retrieve them. You can even print and delete multiple documents in a single operation.

### Network printing: easy connections, secure output

The Gestetner DSm735/DSm745 Series features all of the connections and drivers you need to make connecting to your network and printing out virtually any application simple. And it includes several innovative ways to improve the security of your work. For example, you can store your jobs electronically in "virtual mailboxes" at the printer until you release them at walkup with the Hold/Locked/Stored Print feature—eliminating the worry about leaving sensitive prints in the output tray.

- 10/100 BaseT Ethernet and USB 2.0 interfaces ensure easy integration with your network.
- PCL5e/6 and optional Adobe Postscript® 3 provide compatibility with PC and Mac™ platforms.
- PDF Direct Print lets you send PDF files directly to the printer without even opening the application, reducing network traffic and raising productivity. Ideal for printing scanned PDFs.
- 40 GB standard hard drive can rapidly handle even your largest documents and the 384 MB RAM spools print runs quickly.

## Send scanned documents all over the world

- Deliver scanned documents directly to email addresses or automatically file them into folders, eliminating the need to detach and save documents manually.
- Scan to a wide selection of industry-standard formats, including TIFF, TIFF-F, PDF and JPEG.
- Access up to five corporate LDAP servers and make efficient use of your existing information such as login data, passwords and company address books.

## Fax your way to big savings

The 33.6Kbps Modem features standard JBIG Compression and will accommodate even heavy fax users with up to three G3 lines—it's like having three fax machines in one! Or transform faxing from a hands-on, manual procedure to a high-tech, cost-cutting document solution.

- Cut steps and save time by conveniently faxing from your PC with LAN Fax.
- Capitalize on the cost-saving benefits of IP Faxing (T.38) and Internet Fax (T.37): for fast, high-quality communication, send and receive faxes directly over your LAN or WAN, bypassing your PSTN.
- Forward faxes directly to email, hard disk drive or folder, ensuring that documents are routed properly.



Store up to 3,000 documents in the Document Server. Frequently used documents can be re-printed, re-faxed and re-scanned.



Scan to URL improves information sharing in your organization while minimizing network traffic.

### Customize your system, enhance your workflow

The Gestetner DS<sub>m</sub>735/DS<sub>m</sub>745 Series exceeds industry standards with Embedded Software Architecture – an innovative Java (J2ME)-compatible software development platform. Embedded Software Architecture allows for the development of key applications that run on the Gestetner DS<sub>m</sub>735/DS<sub>m</sub>745 Series, dramatically enhancing your organization's workflow. The Gestetner DS<sub>m</sub>735/DS<sub>m</sub>745 Series can easily be customized to meet your needs by controlling features such as the operation panel, printing, saving files and scanning.

### DocumentMall: Manage/Share/Protect your documents

Gestetner DocumentMall allows users to securely store, edit, share and retrieve documents and files from their PCs via the Internet, and securely scan hardcopy documents directly from Gestetner DS<sub>m</sub>735/DS<sub>m</sub>745 MFPs. This powerful document management application is accessible 24/7 and provides businesses with a managed and hosted off-site environment that allows knowledge workers in remote locations to collaborate real-time on projects in a secure environment. Advanced search and indexing software and unlimited scalability permits businesses of any size to use DocumentMall as a versatile resource.

 Embedded Software Architecture

 documentmall

# DSm735 DSm745

## Ensure the security of your documents and network

The Gestetner DSm735/DSm745 Systems offer an impressive list of security features designed to keep your documents, data and network secure at all points of contact.

- Windows/LDAP Authentication guards access to your network PC by requiring users to input their existing names and passwords.
- Restrict unauthorized access by limiting user rights to the device by application.
- Deter copying of sensitive documents by using Unauthorized Copy Control, a welcome feature in any office responsible for creating and distributing confidential documents.
- Encryption protects data from interception, falsification and tampering during transmission.
- Stored Print/Hold Print delays output until the user releases them during walkup. This prevents unauthorized persons from seeing—or accidentally retrieving—sensitive documents lying in output trays.
- DataOverwriteSecurity System (DOSS) automatically overwrites the “latent image” left in the internal hard drive after a job is completed, making any effort to access and reconstruct residual image data virtually impossible.
- Removable Hard Disk Drive provides complete “after hours” protection for your classified or confidential information by allowing you to remove the hard drive to a secure location.



Select the configuration based on the requirements for your office.



## Manage the system from your desktop

- Automatically sends an alert email if it's low on toner or otherwise needs attention.
- Reduce the time required for status checks and programming through Web Image Monitor, which lets you program machine settings and address books with your Web browser tool.



### Your Environmental Partner

The Gestetner DSm735/DSm745 Series is Energy Star® compliant, continuing our longstanding commitment to developing office solutions with superior energy and supply-saving features, including:

- Quick Start Up (OSU) technology
- Toner Recycling
- Power-saving Sleep modes
- Low noise levels
- Duplex and Combine Copy modes
- Minimal ozone emissions



# DSm735 DSm745



### OUTPUT TRAY

Additional 125-sheet Output Tray separates copy output from prints or faxes and lights up when output is present (option).

### FINISHER

Multi-Tray Finisher staples in several positions and punches holes (option) to produce a variety of document types (option).

### PAPER TRAYS

Two user-adjustable, 500-sheet Drawers accept paper sizes up to 11" x 17".

### PAPER DRAWERS

500 x 2, user-adjustable Paper Bank expands capacity to hold up to five different sizes or orientations of paper (option).

### DOCUMENT FEEDER

Standard 80-sheet Automatic Reversing Document Feeder enables efficient scanning for one or two-sided documents up to 11" x 17".

### CONTROL PANEL

Large touch-screen Control Panel makes navigation easy.

### BYPASS TRAY

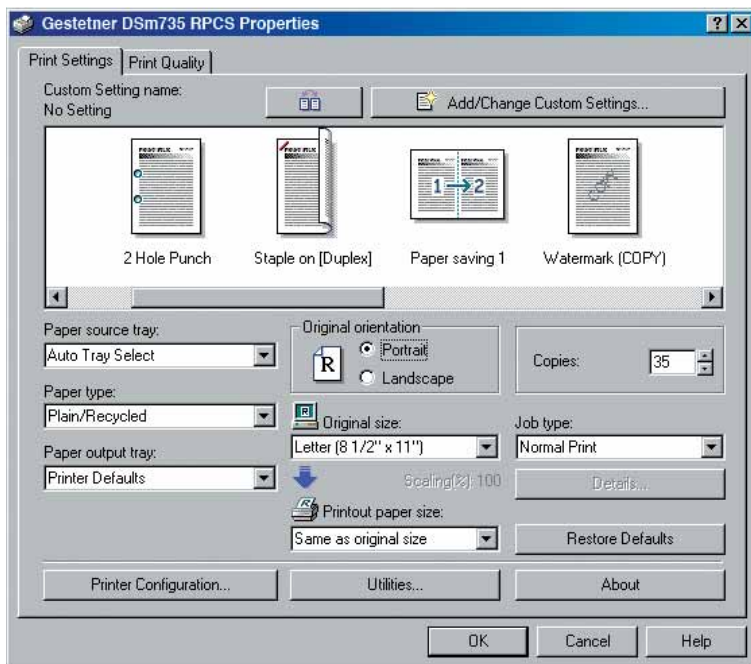
50-sheet Bypass Tray for printing on labels or special papers.

### DUPLEX UNIT

Duplex Unit allows unlimited printing of two-sided documents, reducing filing space and costs.

### LARGE CAPACITY TRAY

Large Capacity Tray holds up to 1,500 sheets, minimizing interruptions on long jobs (option).



## Simplify complex print jobs with Refined Print Command Stream (RPCS)

Even the most complicated jobs can be simplified to one click with the proprietary RPCS driver. The icon-based driver provides comprehensive job control that allow even novices to create complex, professional documents easily.

# Gestetner DSm735/D5m745 Specifications

ENGINE/COPIER SPECIFICATIONS		PRINTER SPECIFICATIONS (OPTION)		SR790 FINISHER 1000 (OPTION)	
Configuration	Console	Print Speed	D5m735: 35 ppm D5m745: 45 ppm	Paper Size	5.5" x 8.5" to 11" x 17"/A6 to A3
Scanning Element	Flatbed with Moving CCD	CPU	RM7035C 466 MHz	Paper Weight	16 to 42 lb. Bond/60 to 157g/m <sup>2</sup>
Printing Process	Array Image Sensor Twin Laser Beam Scanning & Electrophotographic printing	Memory Capacity	384 MB shared	Stack Capacity	Proof Tray: 250 sheets (8.5" x 11" or smaller) Shift Tray: 1,000 sheets (8.5" x 11" or smaller) 500 sheets (8.5" x 14" or larger)
Toner	Dry, Dual Component	Standard Interfaces	10BaseT/100BaseTX, USB 2.0	Staple Capacity	50 sheets (8.5" x 11" or smaller) 50 sheets (8.5" x 14" or larger)
System Memory (std./max.)	128/384 MB RAM	Optional Interfaces	IEEE 802.11b Wireless LAN, Bluetooth, IEEE 1394, IEEE 1284	Staple Position	3 positions (1 staple/2 positions; 2 staples/1 position)
Hard Disk Drive	40 GB standard	Network Protocol	TCP/IP, IPX/SPX, AppleTalk	Dimensions	20.7"(W) x 20.5"(D) x 31.1"(H)
Document Feeder	Standard 80-Sheet ARDF	Network Operating Systems	Windows 9x/NT4.0/2000/Me/XP/ Server 2003, Netware, UNIX, Sun Solaris, HP-UX, SCO OpenServer, Red Hat Linux, IBM AIX, Mac 8.6 - 9.2x, 10.1+, SAP R/3, NDPS Gateway, IBM iSeries/AS/400® using OS/400 Host Print Transform	<b>SR880 MULTI-TRAY FINISHER (OPTION)</b>	
Copy Resolution	600 x 600 dpi	Utilities	SmartDeviceMonitor, Web Image Monitor, Web SmarDeviceMonitor, DeskTopBinder V2 Lite	Paper Size	5.5" x 8.5" to 11" x 17"/A6 to A3
Grayscale	256 levels	Page Description Languages	PCL 5e/6 emulation Gestetner RPCS	Paper Weight	14 to 43 lb. Bond/52 to 163g/m <sup>2</sup>
Exposure Adjustment	Manual & Automatic	Print Resolution	Adobe PostScript 3 (optional) Up to 600 dpi	Stack Capacity	Upper Tray: 500 sheets (8.5" x 11" or smaller) Lower Tray: 2,000 sheets (8.5" x 11" or smaller); 750 sheets (8.5" x 14" or larger)
Quantity Indicator	Up to 999	Fonts for PCL 5e/6	35 Intellifonts, 10 TrueType Fonts, 1 Bitmap, 13 International Fonts	Staple Capacity	50 sheets (8.5" x 11" or smaller) 30 sheets (8.5" x 14" or larger)
Original Type	Book/Sheet	Fonts for PS3	136 PostScript Fonts	Staple Position	4 positions (1 staple/3 positions; 2 staples/1 position)
Maximum Original Size	Up to 11" x 17"	Standard Features	Form Overlay, Watermarks, Spool Printing, Sample/Locked/Hold/Stored Print, Encryption	Dimensions	26.8"(W) x 24.4"(D) x 40.6"(H)
Copy Size	5.5" x 8.5" to 11" x 17"	<b>FAX SPECIFICATIONS (OPTION)</b>		<b>SR890 BOOKLET FINISHER (OPTION)</b>	
Copy Type	Plain Paper, Transparencies	Circuit	PSTN, PBX	Paper Size	5.5" x 8.5" to 11" x 17"/A5 to A3
Warm-Up Time	D5m735: 15 seconds D5m745: 20 seconds	Compatibility	ITU-T G3	Paper Weight	14 to 43 lb. Bond/52 to 163g/m <sup>2</sup>
First Copy Speed	D5m735: 4.3 seconds D5m745: 3.6 seconds	Resolution	200 x 200/100 dpi 400 x 400 dpi (Optional)	Stack Capacity	Upper Tray: 150 sheets (8.5" x 11" or smaller); 75 sheets (8.5" x 14" or larger) Lower Tray: 1,000 sheets (8.5" x 11" or smaller); 500 sheets (8.5" x 14" or larger)
Continuous Copying Speed	D5m735: 35 copies/minute (LTR) D5m745: 45 copies/minute (LTR)	Compression Method	MH, MR, MMR, JBIG	Staple Capacity	50 sheets (8.5" x 11" or smaller) 30 sheets (8.5" x 14" or larger)
Recovery Time (from Auto Off)	D5m735: 10 seconds D5m745: 15 seconds	Scanning Speed	0.43 seconds (LEF)	Booklet Tray Capacity	10 sets (11 to 15 sheets) 15 sets (6 to 10 sheets) 25 sets (less than 5 sheets)
Power Source	120V/60Hz/15A	Modem Speed	33.6 Kbps with Auto Fallback	Booklet Staple Capacity	15 sheets
Dimensions	26.5"(W) x 26"(D) x 34"(H)	Transmission Speed	G3: 3 seconds per page (MMR Compression) G3: 2 seconds per page (JBIG Compression)	Booklet Staple Position	4 positions (1 staple/2 positions; 2 staples/2 positions; plus saddle stitch)
Weight	214 lbs.	Memory	4 MB standard (320 pages) 28 MB maximum (2,240 pages)	Dimensions (WxDxH)	27.1"(W) x 24.5"(D) x 41.5"(H)
Standard Paper Capacity	500 sheets x 2 trays 50-sheet Bypass tray	Memory Backup	1 hour	<b>2/3 HOLE PUNCH KIT (OPTION)</b>	
Optional Paper Capacity	500 sheets x 2 trays 1,500-sheet Large Capacity Tray	Auto Dials	2,000	Paper Weight	14 to 43 lb. Bond/52 to 163g/m <sup>2</sup>
Paper Size	5.5" x 8.5" to 11" x 17"	Group Dials	100 (max. 500 numbers per group)	Application	For SR880 Multi-Tray Finisher only
Paper Weight	20 - 28 lb. Bond/64 - 105g/m <sup>2</sup> (Trays 1 & 2) 16 - 44 lb. Bond/52 - 163g/m <sup>2</sup> (Bypass) 20 - 28 lb. Bond/64 - 105g/m <sup>2</sup> (Duplex)	ID Code Programming	4 digits	<b>ADDITIONAL OPTIONS</b>	
Reduction Ratios	25%, 50%, 65%, 73%, 78%, 85%, 93%	User Function Key	3 keys	Bridge Unit Type 2045	
Enlargement Ratios	121%, 129%, 155%, 200%, 400%	Standard Features	Auto Document (6), Book Transmission, Dual Access, Duplex Reception, Image Rotation	Scanner Accessibility Option Type 3045	
Zoom	25% to 400% in 1% increments	Optional Features	Simultaneous Operation of up to 3 Lines (G3 x 3); LAN-Fax Capability, Internet Faxing (T.37), IP Faxing (T.38), Fax Forwarding to Email/HDD/ Folder with Scan/Print Installed	Fax Type 3045	
Standard Features	Auto Magnification, Auto Paper Select, Auto Tray Switch, Background Numbering, Booklet/Magazine Copy, Center/Border Erase, Combine Mode, Cover Insertion, Date Stamp, Directional Magnification, Document Server (3,000 file capacity), Electronic/Rotate Sorting, 10 Job Programs, Negative/Positive, OHP Slip Sheet, Page Number Stamp, Paper Designate, Series Copy, Pre-Set and User Stamps, Touch Screen Control Panel, 100 User Codes (optional 500 max.)	<b>PS30 PAPER BANK (OPTION)</b>		Handset Type 450	
<b>SCANNER SPECIFICATIONS (OPTION)</b>		Paper Size	5.5" x 8.5" to 11" x 17"/A5 to A3	G3 Interface Type 3045	
Scanning Speed	Embedded Scanning: 52 ipm (@ 200 dpi)	Paper Weight	20 to 28 lb. Bond/60 to 105g/m <sup>2</sup>	Printer/Scanner Unit Type 3045	
Scanning Resolution	600 dpi	Paper Capacity	2 x 500-sheets	PostScript Type 3045	
Grayscale	256 Levels	Dimensions	21.3"(W) x 23.7"(D) x 10.7"(H)	Key Counter Bracket Type H	
Scan Area	Up to 11" x 17"	<b>RT45 LARGE CAPACITY TRAY (OPTION)</b>		DOSS Type D	
Standard Interfaces	10BaseT/100BaseTX	Paper Size	8.5" x 11"/A4	File Format Converter Type B	
Optional Interfaces	IP Over IEEE 1394, IEEE 802.11b Wireless LAN	Paper Weight	20 to 28 lb. Bond/60 to 105g/m <sup>2</sup>	Copy Data Security Unit Type A	
Protocol	TCP/IP, SMTP, SMB, FTP, IPX, POP3, NCP	Paper Capacity	1,500 sheets	FAC25 Cabinet	
Memory Capacity	384 MB Shared	Dimensions	15.4"(W) x 19.7"(D) x 15.4"(H)	32 MB Fax Memory	
Standard Features	Embedded Scan-to-Email/HDD/ Folder/URL	<b>ONE BIN TRAY PT330 (OPTION)</b>		User Account Enhancement Kit Type E	
File Formats	Single Page TIFF/JPEG/PDF, Multi-Page TIFF/PDF	Paper Size	5.5" x 8.5" to 11" x 17"/A5 to A3	IEEE 1394 Interface Board Type B	
		Paper Weight	16 to 28 lb. Bond/60 to 105g/m <sup>2</sup>	IEEE 1284 Interface Board Type A	
		Paper Capacity	125 sheets	Bluetooth Interface Unit Type 3245	
				IEEE 802.11b Interface Unit Type H	
				Removable Hard Drive	
				Additional Removable Hard Drive	

## Gestetner

Gestetner Five Dedrick Place, West Caldwell, NJ 07006

Gestetner® is a registered trademark of Ricoh Corporation. Windows® and Windows® 95/98/Me/NT4.0/2000/XP are registered trademarks of Microsoft Corporation. Macintosh®, Mac® OS and AppleTalk® are registered trademarks of Apple Computer, Inc. Adobe® and PostScript® are registered trademarks of Adobe Systems, Inc. PCL® is a registered trademark of Hewlett-Packard Company. RPCS™ is a trademark of Ricoh Company, Ltd. All other trademarks are the property of their respective owners. Print speed may be affected by network, application or PC performance. Specifications and external appearances are subject to change without notice. Products are shown with optional features.

Printed in U.S.A. on recycled paper. G2143

