

LD260c/LD275c



Brilliant color meets superior productivity

These fast, flexible systems set new standards for high-quality color, intuitive operation and dependable, high-speed performance in general office and light-production environments



Fast, affordable color for demanding jobs

To stay ahead of the competition, your organization has to move quickly, work harder, stay focused and deliver outstanding results, every single day. That's where the Lanier LD260c/LD275c Series comes in. These innovative color multifunctional products (MFPs) provide an unprecedented combination of high-speed productivity, spectacular image quality and proven reliability, all with cost-effective operation. With the fastest output speeds in their class, the Lanier LD260c and Lanier LD275c set a new industry standard for color and black & white performance.

Maximum Productivity and Convenience

You can't worry about tomorrow if you can't deliver today. That's why the Lanier LD260c/LD275c Series provides superior speed and reliability. So you get immediate turnaround for critical jobs, and the absolute confidence that these systems will be ready when you need them.

- Outpace similarly equipped systems with the Lanier LD260c, which delivers 55 color and 60 black & white copies per minute (cpm), or the Lanier LD275c, which reaches speeds of 70 color and 75 black & white cpm. Both offer duplexing at 100% of rated speed.
- Access exactly what you need in a few menu selections with the large, full-color WVGA control panel. This intuitive LCD touch-screen comes standard on all Lanier color MFPs, so you can expand the fleet without retraining users.
- Handle quick-turn jobs with a shorter warm-up time and a faster first-copy time than any other high-speed color device in this segment.
- Maximize productivity by reloading paper while the current job is still running. With all options, these systems hold up to 7,400 sheets.
- Place these MFPs virtually anywhere, especially in locations where floor space is at a premium, with their small footprints and wireless interface options.
- These systems are designed with the user in mind so that both systems are easy for anyone to operate, from the newest employee to the most seasoned production professional.





Find critical functions quickly with the user-friendly, full-color touch-screen.

Put Your Best Image Forward

Full-color documents get more attention, so they have to look amazing. Choose the Lanier LD260c/LD275c Series to deliver high-quality color documents that strengthen your image, impress your customers and build your reputation.

- Ensure exceptional image quality with true 600 dpi scanning, printing, and copying, while other Lanier technologies provide vivid, saturated colors and sharp, elegant black & white documents.
- Expect enhanced definition, consistent coverage and density with new Lanier toner technology. Smaller, more uniform particles result in smooth blends, solid fills and crisp text.
- Ensure consistent color for the entire length of the run with constant measurements and adjustments that are applied automatically during operation.

Dramatic Cost Savings

The Lanier LD260c and Lanier LD275c are complete color solutions. Eliminate outsourcing, consolidate output from multiple laser/inkjet printers and significantly reduce operating costs while increasing your profitability.

- Fast-paced offices can print full-color marketing collateral and forms on demand to minimize inventory costs and eliminate the risk of discarding obsolete materials.
- Graphics houses can utilize these flexible color MFPs to produce attractive layouts, client mock-ups and contact sheets quickly and cost effectively.
- Copy shops and quick printers can add the Lanier LD260c/LD275c Series to grow market share and generate new revenue streams from customers who need immediate turnaround.
- CRDs and commercial printers can use these systems as an alternative to offset for short-run color jobs, improving workflow and load-balancing.

The Lanier LD260c/LD275c boost productivity in offices and light production environments.

Highly Versatile Performance

Engineered to integrate multiple critical functions into a single, powerful system, the Lanier LD260c/LD275c Series includes an extremely versatile feature set.

- Take advantage of a comprehensive array of copying, scanning, faxing and document storage capabilities, as well as multiple options for network printing.
- Select the Lanier controller for streamlined production in general offices. Its icon-driven setup is very easy to operate, even for inexperienced users. Users can set up RPCS or PCL 5c drivers, with Adobe PS3 available as an option.

Flexible Professional Finishing

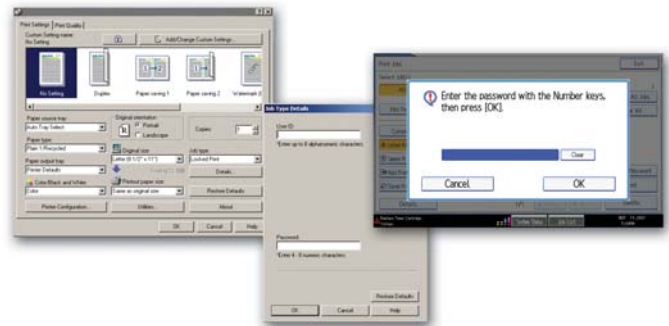
Use the Lanier LD260c and the Lanier LD275c to produce the full-color, professionally finished documents. Both systems can be configured with a wide range of accessories.

- Load virtually any paper grade — up to 80 lb. Cover through the Paper Trays or up to 110 lb. Cover through the Bypass.
- Maximize uptime with an optional Large Capacity Tray that accommodates paper sizes up to 12" x 18", weights up to 110 lb. Cover, and holds up to 2,000 sheets.
- Entice customers to try new formats with a Z-Fold Unit that incorporates 11" x 17" sheets into 8.5" x 11" documents, or 8.5" x 11" sheets into 5.5" x 8.5" documents.
- Choose from three finishing options that collect, collate, and staple your documents, making them ready for distribution.

Advanced Security Technology

Both MFPs employ sophisticated security features to protect confidential documents and system access from unauthorized users.

- Ensure only authorized users and administrators gain access to the system with external (Windows, LDAP) and internal (basic and user code) authentication.
- Manage color usage more effectively by restricting access to color output (or other functions, such as finishing) by individual user.
- Rely on encryption to protect address book data, documents sent over the network and remote management access. The systems also support IP security protocols to encrypt every IP packet in the data stream for high-security applications.



Keep sensitive documents — and the network — safe with proven security features.



Eliminate outsourcing by producing all your full-color documents in house.

Your Environmental Partner



Lanier continues its long-standing commitment to developing solutions with environmentally friendly and superior energy- and supply-saving features, without compromising productivity, including:

- Quick Start-Up (QSU) Technology
- Power-Saving Sleep Mode
- Duplex and Combine Copy Modes
- Toner Recycling
- Low Noise Levels
- Minimal Ozone Emissions
- Restriction of Hazardous Substances (RoHS) Compliant

Equipped for High-speed Performance

Optional Cover Interposers:

Feed pre-printed sheets from one or two sources for front and back covers.

Optional Z-Fold Unit: Folds larger sheets for insertion in smaller-format documents.

100-Sheet Automatic Reversing Document Feeder (ARDF) (standard): Scans a color page in 1.0 seconds or a black & white page in 0.8 seconds.

WVGA Control Panel (standard): Program any task in seconds with the large, full-color LCD touch-screen.

Optional 3,000-Sheet Finishers: Choose from 50- or 100-Sheet stapling and 2- or 3-hole punching.

Optional 2,000-Sheet Booklet Finisher: Fold and staple documents to produce finished booklets.

Tandem 2 x 1,100-Sheet Paper Tray, Two 550-sheet Paper Trays and Bypass (standard): These MFPs hold 3,400 sheets in the standard configuration and up to 7,400 sheets with optional paper supplies.

Optional Large Capacity Trays: The A3/DLT tray holds 2,000 sheets, up to 12" x 18" and 110 lb. Cover. The A4/LT tray holds 4,000 sheets, up to 8.5" x 11" and 34 lb. Bond.

Create a configuration that delivers the right features and functions for your most demanding customers.



SR4010 Finisher: With the SR4010 Finisher, you can choose multiple staple locations on documents of up to 50 pages.



SR5000 Finisher: The SR5000 Finisher can staple up to 100 sheets and requires the Finisher Adapter Type C.



SR4020 Booklet Maker: The SR4020 can staple up to 50 sheets in multiple positions or saddle stitch up to 15 sheets (60 page booklets).



RT4000 DLT/LCT: The RT4000 DLT/LCT utilizes the system Bypass Tray for a straight paper path. This helps to reliably feed up to 110 lb. Cover stock (300 g/m²), when combined with its Air Assist Unit.

SPECIFICATIONS

MAINFRAME SPECIFICATIONS

| | |
|--------------------------------|--|
| Configuration | Console |
| Scanning Element | Flatbed with moving 3-line CCD array image-scanning |
| Toner | Chemical toner |
| System Memory | 320GB (160GB x 2) |
| Document Feeder | Standard 100-Sheet ARDF |
| Copy Resolution | 600 x 600 dpi |
| Color | 256 Levels |
| Image Density | Manual & Automatic |
| Quantity Indicator | 1 - 9,999 |
| Original Type | Sheet/Book/Object |
| Original Size | Up to 11" x 17" |
| Warm-Up Time | LD260c <90 sec. LD275c <75 sec. |
| First-Copy Out Time | LD260c 5.7/7.5 sec. (BW/FC) LD275c 4.9/6.4 sec. (BW/FC) |
| Speed | LD260c 60/55 cpm (BW/FC) LD275c 75/70 cpm (BW/FC) |
| Standard Paper Capacity | 1st Tray 1,100 x 2 550 sheets x 2nd & 3rd Trays, 100-Sheet Bypass Tray |
| Paper Size | 7,400 sheet std. max capacity 5.5" x 8.5" to 12" x 18" |
| Paper Weight | 14 lb. Bond - 80 lb. Cover (std. Trays) 17 lb. Bond - 90 lb. Index (Duplex) 14 lb. Bond - 110 lb. Cover (Bypass) |
| Magnification | 7 reduction and 5 enlargement |
| Zoom | 25% to 400% in 1% increments |
| Power Source | LD260c/120 V/ 20A/60 Hz LD275c/208-240V/20A/60Hz |
| Dimensions (WxDxH) | 29.5" x 33.5" x 43.1" (excluding ARDF) |
| Weight | < 656.9 lb. |

COPIER FEATURES

Auto Paper Selection, Auto Reduce/Enlarge, Auto Start, Auto Tray Switching, Auto Image Density, Auto Reduce and Enlarge, Duplex, User Codes, Stapling, Color Erase/Convert, Electronic Sort, Image Rotation, Rotate Sorting, Series Copy, Doc Server, User Tools, Job Presets, Book/Series/Combine, Insert Cover/SlipSheet, Chaptering, Tabs, OHP, Color/Image Creation, Sample Copy, Energy Saver, Image Adjustment, Multiple Security Options

PRINTER SPECIFICATIONS

| | |
|-----------------------------|--|
| CPU | Intel Pentium - M 1.4GHz |
| RAM | 1,536MB (std./max) |
| HDD | 320GB (160GB x 2) |
| Standard Interfaces | Ethernet (100BaseTX10 Base-T), USB2.0 |
| Optional Interfaces | IEEE1284, Wireless LAN (IEEE802.11a/g) Bluetooth, Ethernet 1000 Base-T |
| Network Protocol | TCP/IP, IPX/SPX, SMB, Apple Talk |
| Operating Systems | Windows; 2000/XP/Vista/Server 2003. Netware; 3.12, 3.2, 4.1, 4.11, 5.0, 5.1, 6, 6.5. Unix, Sun Solaris, HP- UX, SCO OpenServer, RedHat Linux, IBM AIX. MAC: OS 8.6 - 9.2x, OS X 10.1 or later |
| PDL | RPCS, PCL5c, PCL6, Adobe PS3 (optional) |
| Print Resolution | 600 dpi |
| Fonts for PCL | 35 Intellifonts, 10 TrueType Fonts, International Fonts: 13 Intellifonts |
| Fonts for PostScript | 136 Adobe PostScript Type1 Fonts |

SCANNER SPECIFICATIONS

| | |
|----------------------------|---|
| Scanning Resolution | Up to 600 dpi |
| Scan Area | Up to 11" x 17" |
| Scan Speed | 81/69 ipm (BW/FC) |
| Compression | BW/Binary - TIFF MH/MR/MMR Full Color/Grayscale JPEG (5 levels) |
| Standard Interfaces | 10BaseT/100BaseTX, Wireless LAN |
| Scanner Features | BW/OCR, BW/FC Photo, BW/FC Text, Auto Color, Auto Density, Image Rotation, Mixed Size, SADF Batch |

| | |
|--|---|
| Scan-To Destinations | Scan-to-Email Scan-to-Folder Scan-to-URL TWAIN Scanning |
| Scan To Email Authentication Resolution | SMTP, POP before SMTP Default 200 dpi to 600 dpi Max. 2,000 addresses |
| Register E-mail Addresses in HDD Register Group Addresses in HDD | Max. 500 addresses |
| LDAP File Type | Yes, up to five LDAP Servers Single/Multi-Page PDF, Single/ Multi- Page TIFF, High Comp. PDF |
| File Size | 128 - 102,400 KB* |
| *If file exceeds size, It will be divided into multiple e-mails. | |
| Scan To Folder Protocol Support Security | SMB, FTP, NCP Client folder log-in, Encryption of name and password during trans. Default 200 dpi to 600 dpi Max. 2,000 |
| Resolution Folder Addresses in HDD Group Addresses Size Restriction File Type | Max. 100 destinations None Single/Multi-Page PDF, Single/ Multi- Page TIFF, High Comp. PDF |

DOCUMENT SERVER SPECIFICATIONS (STANDARD)

| | |
|--------------------------------|---------|
| HDD Capacity | 191.8GB |
| Max. Stored Documents | 3,000 |
| Max. Pages per Document | 2,000 |
| Max. Stored Pages | 15,000 |

FAX SPECIFICATIONS (OPTION)

| | |
|------------------------------|--|
| Circuit Compatibility | PSTN, PBX ITU-T (CCITT) G3, Additional G3 optional |
| Resolution | 200 x 100/200 dpi (400 dpi w/opt. SAF memory) |
| Compression Method | MH, MR, MMR, JBIG |
| Scanning Speed | 0.5 sec |
| Modem Speed | 33.6 Kbps - 2,400 bps |
| Transmission Speed | G3: Approx 2 sec. |
| Memory Backup | 1 Hour |
| Quick/Speed Dials | 2,000 numbers |
| Group Dials | 100 groups (500 per group) |
| Energy Saver | Standard |

ACCESSORIES

| | |
|---|--------------------------|
| RT4000 DLT/LCT Paper Capacity | 2,000 Sheets |
| Paper Size | up to 12" x 18" |
| Paper Weight | 14 lb. - 110 lb. Cover |
| Size | 38.1" x 28" x 29.3" |
| Weight | 192 lbs. |
| RT43/LCT Paper Capacity | 4,000 Sheets |
| Paper Size | 8.5" x 11" |
| Paper Weight | 14 lb. - 34 lb. Bond |
| Size | 12" x 18" x 26" |
| Weight | 44 lbs. |
| CS391 9-Bin Mailbox Number of Bins | 9 |
| Stack Capacity of Bins | 100 Sheets |
| Paper Size | 5.5" x 8.5" - 11" x 17" |
| Paper Weight | 14 lb. - 34 lb. Bond |
| Size | 21" x 24" x 26" |
| Weight | 33 lbs. |
| Z-Fold Unit Paper Size | 8.5" x 11" and 11" x 17" |
| Paper Weight | 17 lb. - 20 lb. Bond |
| Size | 7" x 24" x 38" |
| Weight | 121 lbs. |

| | |
|---|--|
| 2 Source Cover Interposer Paper Size | 5.5" x 8.5" - 12" x 18" |
| Paper Weight | 17 lb. Bond - 110 lb. Index |
| Size | 28" x 29" x 50" |
| Weight | 99 lbs. |
| SR5000 100-Sheet Staple Finisher** Capacity (Proof Tray) | 500 Sheets (8.5" x 11" or smaller) 250 Sheets (8.5" x 14" or larger) |
| Paper Size | 5.5" x 8.5" - 12" x 18" |
| Capacity (Shift Tray) | 8.5" x 11" - 3,000 Sheets 8.5" x 14" - 11" x 17" - 1,500 Sheets 12" x 18" - 1,000 Sheets |
| Paper Weight | 14 lb. Bond - 110 lb. Cover |
| Staple | 8.5" x 11" - 100 Pages 8.5" x 14" - 11" x 17" - 50 Pages |
| Size | 31" x 29" x 39" |
| Weight | 165 lbs. |
| **SR5000 must include Finisher Adapter Type C. | |
| SR4010 50-Sheet Staple Finisher Capacity (Proof Tray) | 250 Sheets (8.5" x 11" or smaller) 50 Sheets (8.5" x 14" or larger) |
| Paper Size | 5.5" x 8.5" - 12" x 18" |
| Capacity (Shift Tray) | 8.5" x 11" - 3,000 Sheets 8.5" x 14" - 11" x 17" - 1,500 Sheets |
| Paper Weight | 14 lb. Bond - 110 lb. Cover |
| Staple | 8.5" x 11" - 50 Pages 8.5" x 14" - 11" x 17" - 30 Pages |
| Size | 26" x 24" x 38" |
| Weight | 119 lbs. |

| | |
|--|--|
| SR4020 Booklet Maker Capacity (Proof Tray) | 250 Sheets (8.5" x 11" or smaller) 50 Sheets (8.5" x 14" or larger) |
| Paper Size | 5.5" x 8.5" - 12" x 18" |
| Capacity (Shift Tray) | 8.5" x 11" - 2,000 Sheets 8.5" x 14" - 11" x 17" - 1,000 Sheets |
| Paper Weight | 14 lb. Bond - 110 lb. Cover |
| Staple | 8.5" x 11" - 50 Pages 8.5" x 14" - 11" x 17" - 30 Pages |
| Saddle Stitch Staple*** Size | 8.5" x 11" - 12" x 18" - 15 Pages 26" x 24" x 38" |
| Weight | 139 lbs. |
| ***Paper weight for saddle stitch stapling is 28 lb. Bond max. | |

ADDITIONAL ACCESSORIES

Punch Unit for SR5000
Punch Unit for SR4010/4020
Jogger Option for 4010/4020
Legal Tray for RT43 LCT Type 1075
11" x 17" Tray Type 2105
Copy Connector Kit Type 3260
Tab Sheet Unit Type 3260
File Format Converter Type E
HDD Overwrite Security Kit Type H
Copy Data Security Kit Type F
HDD Encryption Unit Type A
Adobe PostScript3 Type C7500
IEEE802.11a/g Type J
IEEE1284 Type A
Bluetooth Interface Unit Type 3245
Browser Unit Type D
Java VM Card Type F
G3 Interface Kit Type C7500
Key Counter Bracket Type 1027
Reader Key Card Bracket Type B
Key Card I/F Unit Type A
Gigabit Ethernet Type B

