

**LANIER**

# SP C222SF



DESKTOP COLOR LASER MFP

*High-quality color, exceptional convenience*

*With this latest desktop color laser MFP series you can now enjoy the speed, versatility and productivity of a color laser multifunctional printer that is specifically engineered to meet the needs of small offices and workgroups*



# Bring Multifunctional Color To The Desktop

No matter what tasks you handle on a daily basis, the Lanier® SP C222SF Series can help you accelerate workflow, accomplish a wider range of jobs and energize documents with vibrant business color. These desktop color laser multifunction printers (MFPs) offer powerful, four-in-one performance enhanced with capabilities normally reserved for much more expensive systems. They also deliver proven Lanier technology in a convenient, compact design. Plus, these smart, sleek systems are simple to operate, easy to maintain and highly affordable to own.

## **Outstanding Efficiency and Quality**

Small offices, small workgroups and single-user environments can expect the Lanier SP C222SF Series to provide fast results for a wide range of jobs, and bold color output that easily exceeds the quality of inkjet.

- Deliver every document quickly to maximize productivity. These systems print and copy full-color and black & white documents at the exact same rate: 21 pages-per-minute (SP C221SF and SP C222SF) or 16 pages-per-minute (SP C220S).
- Print proposals, reports, Web content and other documents in sharp black & white or vivid color. All three MFPs offer resolutions up to 2400 x 600 dpi.
- Take your documents beyond the limits of inkjet. Laser-quality printing and copying ensure fast, consistent results on plain paper without unsightly smearing.
- Share hardcopy documents easily or start building an archive with full-color and black & white scanning. Scan documents with resolutions up to 1200 x 1200 dpi, or convert scanned files to editable text.
- Send critical documents to customers, colleagues and other business partners with speed and convenience via Group 3 faxing\*, including 20 One-Touch numbers.
- Reduce wait time for all your printing and copying. First print speed is 14 seconds for either black & white or color, and first copy time from the Automatic Document Feeder\* is just 30 seconds.



*Streamline your workflow and handle virtually any document task with the fast, cost-effective Lanier SP C222SF Series.*





*An intuitive control panel makes it easy to find exactly what you need.*

## Simple, Intuitive Operation

The Lanier SP C222SF Series features a user-friendly design that makes it easy for small office users to complete jobs efficiently and move on to more critical work.

- Replace supplies quickly with All-in-One Cartridges that simplify inventory and storage. They have a no-mess design that allows for one-handed replacement.
- Achieve peak productivity faster. These compact MFPs are easy to set up and simple to maintain, even for novice users.
- Locate these small-footprint MFPs in remote offices, on a reception desk, in an executive suite, inside a kiosk or in other space-restricted environments.
- Manage your MFP remotely to save time and effort. Status Image Monitor software lets you check supply levels and change settings via the Web.

## Unprecedented Capabilities

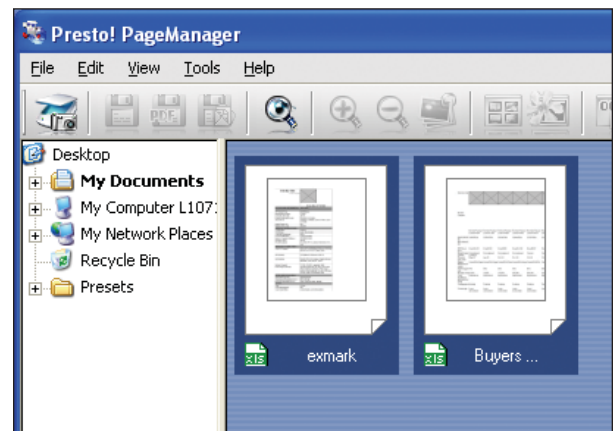
These MFPs make it truly affordable for small businesses and workgroups to take advantage of the same special features as much larger organizations.

- Reduce paper usage and supply costs with standard automatic duplex printing\*.
- Distribute documents instantly with robust, easy-to-use Scan-To technology. Scan-To-Email does not require a dedicated server or additional software. Upload files to a shared server with Scan-To-FTP or to a local server with Scan-To-Folder.
- Minimize interruptions due to reloading paper with a maximum paper capacity of 751 sheets\*.
- Improve document workflow with the PageManager utility, an easy-to-use application that enables automated file management, OCR scanning and other time-saving functions.

\*SP C221SF and SP C222SF only.



*Use the Automatic Document Feeder\* to accelerate scanning, copying and faxing\* tasks.*



*Streamline document management with the versatile, built-in PageManager utility.*

## Your Environmental Partner



**Lanier continues its long-standing commitment to developing office solutions with environmentally friendly and superior energy- and supply-saving features, without compromising productivity, including:**

- Quick Start-Up (QSU) Technology
- Power-Saving Sleep Mode
- Combine Copy Mode
- Low Noise Levels
- Minimal Ozone Emissions
- Restriction of Hazardous Substances (RoHS) Compliant

## SPECIFICATIONS

## ENGINE SPECIFICATIONS

<b>Configuration:</b>	Desktop
<b>Technology:</b>	Reading element: Flatbed with CCD array image-sensor Printing Processing: Laser beam scanning and electrophotographic printing with mono component toner development, 4 drums tandem method
<b>Print Resolution:</b>	600 x 600 dpi (Speed Mode), 1200 x 600 dpi (Standard Mode), 2400 x 600 dpi (Fine Mode)
<b>Output Speed (Letter):</b>	SP C220S: 16 pages-per-minute in B&W and full-color SP C221SF / SP C222SF: 21 pages-per-minute in B&W and full-color
<b>First Print Speed:</b>	14 seconds or less
<b>Warm-Up Time:</b>	51 seconds or less
<b>Copy Resolution:</b>	600 x 600 dpi (Flatbed), 600 x 300 dpi (ADF)
<b>Platen Glass:</b>	Original Type: Sheet/Book/3D objects
<b>Document Feeding:</b>	Standard 35-Sheet Automatic Document Feeder* Paper Size: 5.5" x 8.5" - 5.5" x 14" Paper Weight: 14 - 28 lb. (52 - 105 g/m <sup>2</sup> )
<b>Standard Paper Capacity:</b>	250-Sheet Tray, 1-Sheet Bypass Tray
<b>Optional Paper Tray:</b>	SP C221SF / SP C222SF: 500-Sheet Paper Feed Unit
<b>Maximum Input Paper Capacity:</b>	SP C220S: 250 sheets + 1-Sheet Bypass Tray Total: 251 sheets SP C221SF / SP C222SF: 250 sheets + 1-Sheet Bypass Tray + 500-Sheet Paper Feed Unit Total: 751 sheets
<b>Output Capacity:</b>	150 sheets (face down)
<b>Automatic Duplex Printing:</b>	Standard*
<b>Paper Sizes:</b>	Standard Tray: Letter (8.5" x 11"), A4 (8.3" x 11.7"), EXE (7.25" x 10.5"), B5 (6.9" x 9.8"), Legal (8.5" x 14"), Custom (Width 3.6" - 8.5", Length 5.8" - 14.24") Optional Paper Feed Unit*: Letter (8.5" x 11"), A4 (8.3" x 11.7") Bypass Tray: Letter (8.5" x 11"), EXE (7.25" x 10.5"), B5 (6.9" x 9.8"), Legal (8.5" x 14") Duplex: Letter (8.5" x 11"), EXE (7.25" x 10.5"), B5 (6.9" x 9.8"), Legal (8.5" x 14")
<b>Paper Weight:</b>	Standard Tray and Bypass Tray: 16 - 40 lb. Bond / 83 lb. Index (60 - 160 g/m <sup>2</sup> ) Optional Paper Feed Unit: 16 - 28 lb. Bond (60 - 105 g/m <sup>2</sup> )
<b>Acceptable Paper Types:</b>	Standard Tray and Bypass Tray: Plain Paper, Recycled Paper, Envelopes, Glossy Paper, Thick Paper & Labels Optional Paper Feed Unit: Plain Paper, Recycled Paper
<b>Dimensions (W x D x H):</b>	SP C220S: 16.54" x 19.41" x 17.28" (420 x 493 x 439 mm) SP C221SF / SP C222SF: 16.54" x 19.41" x 18.74" (420 x 493 x 476 mm)

<b>Weight:</b>	SP C220S: 61.6 lbs (28 kg or less) SP C221SF / SP C222SF: 66.14 lbs. (30 kg or less) 120 V, 60Hz
<b>Power Requirements:</b>	
<b>Maximum Power Consumption:</b>	1,300W or less
<b>Energy Saver Mode:</b>	20W-SP C220S & SP C221SF and 25W-SP C222SF
<b>Safety Regulations:</b>	UL60950-1 First Edition, CSA-22.2 No. 60950-1-03 First Edition, Energy Star: Color Multifunction Printer - Tier 1

## PRINT CONTROLLER SPECIFICATIONS

<b>CPU:</b>	400MHz
<b>Printer Languages:</b>	SP C220S / SP C221SF: DDST (GDI) SP C222SF: PCL5c/6, PostScript 3 emulation SP C222SF: PCL/PS3: 80 fonts SP C220S / SP C221SF: 128 MB RAM standard/maximum SP C222SF: 256 MB RAM standard, 512 MB RAM maximum shared
<b>Fonts:</b>	SP C222SF: PCL/PS3: 80 fonts
<b>Memory:</b>	SP C220S / SP C221SF: 128 MB RAM standard/maximum SP C222SF: 256 MB RAM standard, 512 MB RAM maximum shared
<b>Standard Interface:</b>	USB 2.0, Ethernet 10/100Base-TX
<b>Optional Interface*:</b>	SP C220S / SP C221SF/ SP C222SF IEEE 802.11b/g Wireless Bridge SX 2500CG
*Please note the Wireless Bridge Option and 10/100Base-TX cannot operate simultaneously.	
<b>Network Protocols:</b>	TCP/IP, IPP
<b>Operating Systems:</b>	Windows 2000/XP/Server 2003/Vista; Mac OS X v.10.2.8 - 10.4 DDST: Windows 2000/XP/Server 2003/Vista Mac OS X v.10.2+, Citrix Server PCL 5c/6: Windows 2000/XP/Server 2003/Vista; Mac OS X v.10.2+, Citrix Server PostScript 3: Windows 2000/XP/Server 2003/Vista; Mac OS X v.10.2+, Citrix Server Status Image Monitor
<b>Drivers:</b>	
<b>Software:</b>	

## MEMORY OPTIONS

<b>256 MB RAM Memory Unit</b>	
<b>Unit Type F</b>	Order# 003310MIU
<b>(SP C222SF only):</b>	

## COPIER SPECIFICATIONS

<b>First Copy Speed:</b>	30 seconds (for both B&W and full-color)
<b>Single Document</b>	
<b>Multiple Copy:</b>	SP C220S: 16 copies-per-minute in B&W and full-color SP C221SF / SP C222SF: 21 copies-per-minute in B&W and full-color
<b>Multiple Page Document</b>	
<b>Single Copy:</b>	SP C221SF / SP C222SF: 20 copies-per-minute in B&W and 10 copies-per-minute in full-color 1 - 99
<b>Quantity Indicator:</b>	
<b>Reduction / Zoom Ratios:</b>	50, 65, 78, 93, 129, 155, 200, 400% / 25 - 400% in 1% steps Image Density Adjustment, Copy Mode (Text / Photo / Mixed), Memory Copy, Combine Copy (2-in-1, 4-in-1; ADF Only)
<b>Copier Features:</b>	

## SCANNER SPECIFICATIONS

<b>Scanning Modes:</b>	Full-color and 256-level grayscale TWAIN scanning
<b>Scanning Resolution:</b>	Scanner: 1200 x 1200 dpi With Driver: Max. 19200 x 19200 dpi (interpolated)
<b>Scanning Speed:</b>	B&W: Less than 5 seconds a page Full-color: Less than 10 seconds a page
<b>Scan Area:</b>	Via Platen: Max. width: 8.5" (216 mm), max. length: 11.7" (297 mm) Via ADF*: Width: 5.5" - 8.5" (139.7 - 215.9 mm), Length: 5.7" - 14" (139.7 - 355.6 mm)
<b>Utilities and Drivers:</b>	TWAIN Driver, Scanner utility (PageManager)
<b>Protocol Support:</b>	TCPIP, SMB
<b>Scanning Features:</b>	TWAIN /WIA, Scan-To-Email, Scan-To-Folder, Scan-To-FTP

## FACSIMILE\* SPECIFICATIONS

<b>Circuit:</b>	PSTN and PABX
<b>Compatibility:</b>	ITU-T Group 3 (V.34)
<b>Resolution:</b>	Standard: 200 x 100 dpi Fine/photo: 200 x 200 dpi
<b>Compression Method:</b>	MH/MR/MMR
<b>Scanning Speed:</b>	Less than 5 seconds a page-per-minute
<b>Modem Speed:</b>	33.6 Kbps with automatic fallback
<b>Transmission Speed:</b>	G3: 3 seconds-per-page
<b>Memory:</b>	Up to 100 pages
<b>One-Touch / Speed Dial:</b>	20 One-Touch / 50 Speed Dial
<b>Fax Features:</b>	Broadcasting (100 locations), Automatic Redial (after 5 minutes), Auto Answer, Memory Transmission, Time Indicator, Error Correction Mode, & Automatic/Manual/ Substitute Reception

## HARDWARE ACCESSORIES

<b>Paper Feed Unit Type*</b>	
<b>TK1010:</b>	Order# 406019 Paper Size: Letter (8.5" x 11"), A4 (8.3" x 11.7") Paper Weight: 16 - 28 lb. Bond (60 - 105 g/m <sup>2</sup> ) Capacity: 500 sheets

## CONSUMABLES\*\*

<b>Black All-in-One Cartridge</b>	
<b>SP C220A:</b>	2,000 pages @ 5% coverage
<b>Yellow All-in-One Cartridge</b>	
<b>SP C220A:</b>	2,000 pages @ 5% coverage
<b>Magenta All-in-One Cartridge</b>	
<b>SP C220A:</b>	2,000 pages @ 5% coverage
<b>Cyan All-in-One Cartridge</b>	
<b>SP C220A:</b>	2,000 pages @ 5% coverage
<b>Waste Toner Bottle:</b>	25,000 pages

\*SP C221SF and SP C222SF only.

\*\*The SP C220S, SP C221SF and SP C222SF ship with starter All-in-One Cartridges that yield 1,000 pages. All other consumables ship at full yield. All-in-One Cartridge yields based on 5% coverage and 24 pages per job.

For maximum performance and yield, we recommend using genuine Lanier parts and supplies.

