

Gestetner

Productivity with the Power of Full Color



M U L T I F U N C T I O N S Y S T E M

DSc460

Standard 100-Sheet Automatic Reversing Document Feeder

Optional Cover Interposer

Optional 3,000-Sheet Finisher



Standard 100-Sheet Bypass Tray

Optional 4,000-Sheet Large Capacity Tray

Standard 2 x 1,100-Sheet Tandem Paper Trays

Standard 2 x 550-Sheet Universal Paper Trays

Gestetner DSc460. Merging Speed And Color Into One All-Purpose System.

WITH THE HIGH-PERFORMANCE GESTETNER DSc460 IN-HOUSE, THE DAYS OF OUTSOURCING COLOR JOBS ARE OVER. STREAMLINE YOUR WORKFLOW AND ENHANCE YOUR IMAGE WITH THIS ADVANCED MULTIFUNCTION SYSTEM, WHICH OFFERS SUPERIOR SPEED, RELIABILITY AND IMAGE QUALITY WHETHER PRINTING, COPYING OR SCANNING IN FULL COLOR OR BLACK & WHITE.

NOT ONLY CAN YOUR NETWORKED WORKGROUPS PERFORM LARGE AND COMPLEX COLOR TASKS ON DEMAND, YOU CAN ALSO CONSOLIDATE ALL YOUR COSTLY COLOR DEVICES INTO ONE EFFICIENT SOLUTION. VERSATILE FINISHING CAPABILITIES GIVE ALL YOUR JOBS THAT PROFESSIONAL TOUCH.

AN EXTREME TURNABOUT IN TURNAROUND TIME

The Gestetner DSc460 speeds through documents while you focus on other work. A **fast 45 ppm full color and 60 ppm black & white print and copy speed** ensures that even intricate color jobs meet your most pressing deadlines. You'll benefit from the same incredible performance when using the Automatic Reverse Document Feeder (ARDF) or duplexing.

What's more, easy one-step access of functions from your PC or at the clearly laid out control panel drives up productivity even further.

ACCOMMODATING FROM FIRST USE TO FINISH

Sized Right. The Gestetner DSc460 was designed with convenience in mind. This ergonomic system fits right into your work environment to minimize use of floor space.



The high-speed DSc460 prints eye-catching color at 45 ppm and black & white at 60 ppm.



Quickly access all functions from the easy-to-use control panel.

Easy to Operate. Gestetner has drawn upon the simple design and intuitive layout of that black & white system LCD you're used to and brought the same ease of use to the DSc460. Walking up to the system and accessing any print, copy or scan function – even color – is as hassle-free as ever.

Efficient to the Finish. Not only can you merge all your color output in one single system, you'll also have the flexibility to collate and staple documents, or even produce finished booklets! Make a lasting impression without the additional effort using the optional 2,000-Sheet Finisher with Saddle Stitch Stapler, ideal for

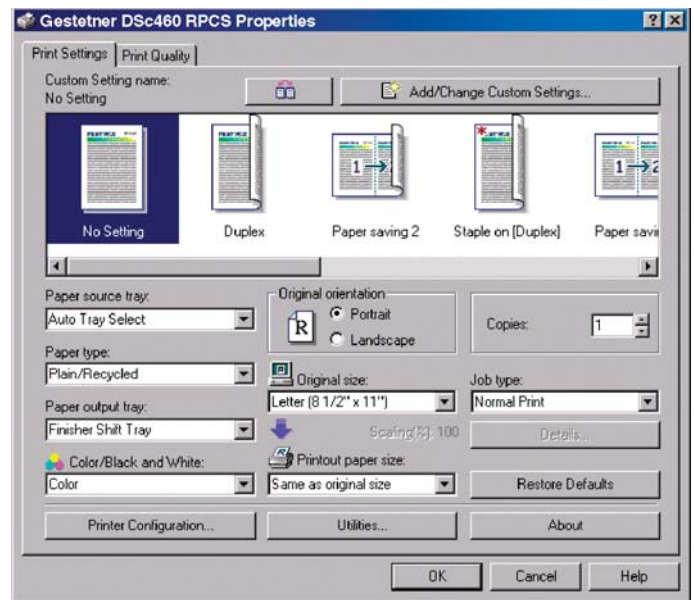
bound and folded newsletters and brochures, or the 3,000-Sheet Finisher with either 100- or 50-Sheet stapling that produces stapled sets in no time. The Cover Interposer enhances the look of reports, manuals and other documents with front and back covers.

TECHNOLOGICALLY ADVANCED, YET USER-FRIENDLY

Work-Ready. The system's powerful 733 MHz controller immediately meets your heaviest workload head on with fast throughput speed and a generous data capacity that accommodates all your large color files.

Simply Compatible. The DSc460 supports today's popular page description languages (PCL 5c/PCL XL emulation come standard) and print drivers, so integration with your network is never an issue...and peak print performance is always guaranteed. The convenient icon-based print driver RPCS

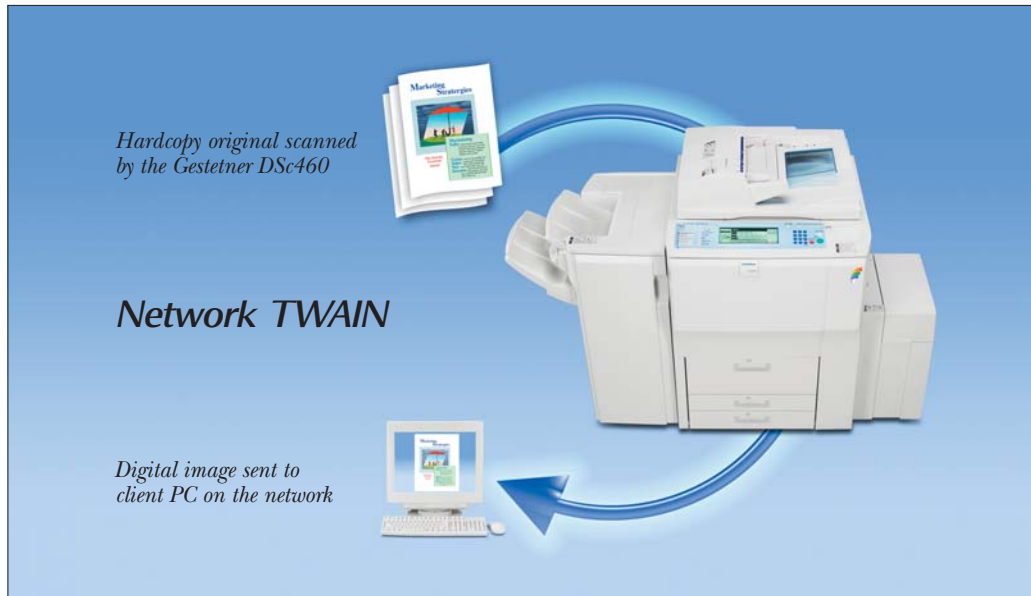
(Refined Print Command Stream) makes printing in a variety of Windows applications easy and error free – all with a click of the mouse. Optional Adobe® PostScript® 3™ is ideal for Macintosh users or for enhancing the work you do with more complex files.



Print Windows-based files efficiently with the RPCS driver which features single-click setup of all printing and finishing job parameters.



Choose from a variety of productive finishers that can collate, staple and produce finished documents with front and back covers.



Seamlessly Connectible. A choice of connectivity options make the DSc460 simple to incorporate in any network environment. Standard 10/100 BaseTX Ethernet or USB 2.0 is complemented by optional IEEE 1284/ECP or IEEE 1394 connectivity. Optional Wireless LAN (IEEE 802.11b) and Bluetooth optimize versatility of communication within your network.

DIVERSE DOCUMENT DISTRIBUTION ALTERNATIVES

While the DSc460 makes documents look good on paper, it also fulfills the need for fast creation and instant, simulta-

neous distribution of electronic files. This multi-capable color system enables network color scanning plus versatile "Scan-to" functions that enhance communications, boost productivity, plus trim your expenses.

Scan-to-Email. Scanned color or black & white digital images are converted to JPEG, TIFF or PDF format. Send a file as an attachment to one or many e-mail recipients in a flash. One-step e-mail address lookup is made possible by convenient LDAP support. Besides your corporate directory, there's bonus storage for additional

e-mail addresses, plus you can expand your contact pool further by entering information in manually.

Scan-to-Folder. When you work remotely, or want to share information with those who do, there's no easier, more productive way than with Scan-to-Folder. Scanned images are stored in a designated Windows folder and accessed by the authorized network user, creating a very cost-effective means for archiving.

Scan-to-FTP. When the need to share large files with remote groups or offices arises, Scan-to-FTP handles the task by bypass-

ing the mail server and sending scanned images directly to an FTP server. Files can even be shared outside the network and within different operating systems. Users authorized to access the FTP directory can view, add, remove and download documents anytime.

Network TWAIN. Gives users added control over color or black & white digital images by allowing them to perform edits back at the host PC, incorporate images into other electronic documents or save them for future retrieval.

DOCUMENT CENTRAL

Facilitating the migration from paper-based to electronic document communication is the DSc460's ingenious Document Server, which provides you with the freedom to print scanned documents on demand or e-mail stored documents without having to rescan. You can even create new complex documents by merging hardcopy and electronic files for printout or distribution.



Security Solutions



The Gestetner DSc460 comes with a complete suite of security solutions to stop threats by unauthorized users.

COLOR USAGE WITH COST CONTROL

The DSc460 heightens cost consciousness with the help of Color Usage Restriction, a tool that assures you're only paying for the color you use... and that lets you control the color usage activity of others.

CUTTING-EDGE SECURITY SOLUTIONS SAFEGUARD DATA

While all businesses may be vulnerable to threats to their information assets, the DSc460 delivers ultimate data protection with advanced security features sure to set your mind at ease.

- **Windows Authentication** – only authorized users with proper names and passwords can access the system.

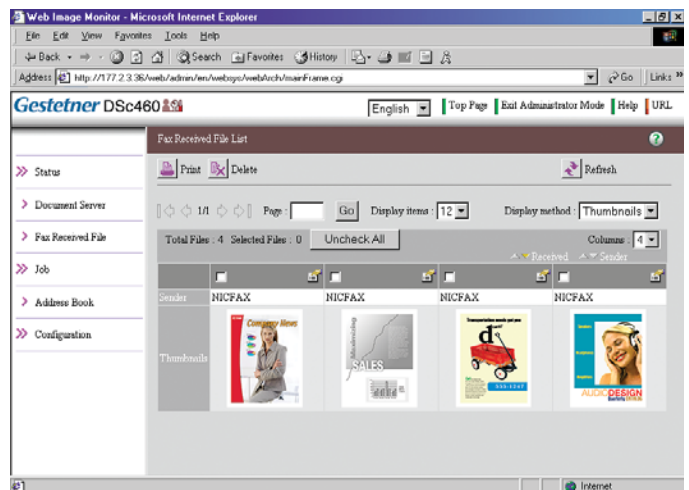
- **SmartDeviceMonitor** – an encryption feature that lets users encrypt print data via Internet Printing Protocol (IPP) using Secure Sockets Layer/Transport Layer Security (SSL/TLS) Technology.
- An optional **HDD DataOverwriteSecurity System** – automatically overwrites information after each copy, scan or print – a measure conforming to the recommended National Security Agency (NSA) methods for managing classified information. The system overwrites data that is temporarily stored on the hard drive by writing over the latent image with random sequences of 1's and 0's three times, making any effort to access and reconstruct residual image data virtually impossible.

ADVANCED MANAGEMENT CAPABILITIES

Even when you're not at your home office, you can still monitor the DSc460 and manage your workflow from any PC with an Internet connection. A full suite of intelligent utilities, including Web Image Monitor, keep you in total control of up-to-the-minute business. Check or change printer settings, view job history or current status, monitor toner and paper levels, reset print jobs or reboot the printer – from anywhere in the network.

COLOR POWER WITHOUT THE SACRIFICE

No more separate systems to maintain, no more high-priced outsourcing. The Gestetner DSc460 single handedly takes on all your color and black & white document demands with great speed and reliability, shattering the myths that say color is too slow and expensive to use. With the DSc460, there is no tradeoff between color affordability and productivity. Now you can perform the same black & white production work as efficiently and cost effectively as you're used to, plus bring fast, high-quality full color in-house at a very aggressive running cost.



Manage your workflow remotely with Web Image Monitor.

The Gestetner DSc460 teams production-level color with high-performance black & white in one powerful system. Contact your Gestetner dealer for more information.

www.gestetnerusa.com

Gestetner DSc460

General Specifications

Printing Process	4-drum Electrostatic Transfer System with Internal Transfer Belt and Dry Two-component Development
Output Speed	Black & White: 60 ppm Full-Color: 45 ppm
Multiple Copies	1 to 999
Warm-up Time	300 seconds
First Copy Time	Black & White: 6.5 seconds Full-Color: 7.5 seconds
Copy Resolution	600 x 600 dpi
Original Type	Books/Sheets/3D Objects
Output Size	5.5" x 8.5" to 11" x 17" Full bleed output on 12" x 18"
Maximum Image Area	11.69" x 18"
Standard Paper Capacity	1,100 x 2 + 550 x 2 + 100 Bypass
Optional Paper Supply	4,000-sheet LCT (max. capacity: 7,400 Sheets)
Paper Sizes/Weights	Standard Tray 1: 8.5" x 11"/14 - 34 lb. Bond Standard Trays 2 & 3: Up to 12" x 18"/14 - 34 lb. Bond 100-sheet Bypass: Up to 12" x 18"/14 - 140 lb. Index 4,000-sheet LCT: 8.5" x 11"/14 - 34 lb. Bond
Paper Types	Plain paper, Recycled paper, Laser qualified transparencies
Duplexing	Standard
Output Tray Capacity	500 sheets
Zoom	25% - 400% in 1% increments
Reduction Ratios	93%, 85%, 78%, 73%, 65%, 50%, 25%
Enlargement Ratios	121%, 129%, 155%, 200%, 400%
Page Memory (LTR)	Document Server stores up to 3,000 documents; Maximum pages per document: 2,000 pages
Power Source	120V/20A, 60Hz
Maximum Power Consumption	Less than 1,920W
Dimensions (WxDxH)	29.5" x 33.5" x 41.3" (excludes standard ARDF)
Weight	656.9 lbs. (includes standard ARDF)

Printer Controller Specifications (Standard)

CPU	Intel Celeron LV @ 733 MHz
Memory	1,384 MB RAM Std./Max. (Shared) 4 x 80 GB HDD = 320 GB HDD (Shared)
Page Description Languages	Standard: RPCS, PCL 5c/PCL XL emulation Optional: Adobe PostScript 3/PDF Direct Print
PCL Fonts	PCL: 45 fonts
PostScript Fonts	136 Adobe PostScript Type 1 fonts (optional)
Print Resolution	600 x 600 dpi
Standard Interfaces	10BaseT/100BaseTX Ethernet, USB 2.0
Optional Interfaces	IEEE 1284/ECP Type A, IEEE 1394 Type B, IEEE 802.11b Wireless LAN Unit Type H, Bluetooth Type 3245 (Choose one)
Network Protocol	TCP/IP, IPX/SPX; SMB (NetBIOS over TCP/IP) Apple Talk (Auto Switching)
Drivers	RPCS, PCL 5c/XL and PS: Windows 95/98SE/NT4.0/2000/Me/XP/Server 2003 Netware 3.12, 3.2, 4.1, 4.11, 5.0, 5.1, 6 PS: Mac OS 8.6 - 9.2x, OS X 10.1 or later UNIX; Sun Solaris, HP-UX, SCO OpenServer, RedHat Linux, IBM AIX
Utilities	SmartDeviceMonitor for Administrator and Client, Web SmartDeviceMonitor, Web Image Monitor, DeskTopBinder Lite

Security Features

DataOverwriteSecurity System (DOSS) Type C (Optional): Security feature that overwrites latent data on the system's hard drive after copy, scan and print jobs.

Other Security Features: Locked (Secure) Print, SSL print, SNMP v3 support, Windows Authentication

Scanner Specifications

Scanning Resolution	Full-color mode: From 100 - 600 dpi (1,200 dpi TWAIN) Monochrome mode: From 100 - 600 dpi Default Setting: 200 dpi
Scanning Speed	Black & white: 60 spm Full-color: 45 spm
Scan Area	Maximum: 11.69" x 17"
Original Size	5.5" x 8.5" to 11" x 17"
Protocol Supported	Network: TCP/IP; Scan-to-Email: SMTP; Scan-to-Folder: SMP, FTP
File Format	Black & white: TIFF (Single/Multi Page), PDF (Single/Multi Page) Grayscale: JPEG (Single Page) Full-color: PDF (Single/Multi Page)
Scan-to Modes Supported	Scan-to-Email (with LDAP support), Scan-to-Folder FTP/SMB, Network TWAIN scanning

Hardware Accessories

Automatic Reversing Document Feeder (Standard)

Original Size	5.5" x 8.5" to 11" x 17"
Original Weight	Simplex: 11 lb. - 34 lb. Bond Duplex: 14 lb. - 34 lb. Bond
Original Stack Capacity	100 Sheets

Large Capacity Tray (Optional)*

Paper Capacity	4,000 sheets (Letter) 2,500 sheets (Legal)**
Paper Sizes	8.5" x 11", 8.5" x 14" **
Paper Weights	14 lb. - 34 lb. Bond

*Requires LCT Adapter

**Requires Legal size conversion kit

9-Bin Mailbox (Optional)*

Number of Bins	9
Stack Capacity per Bin	100 sheets
Acceptable Paper Sizes	5.5" x 8.5" to 11" x 17"
Acceptable Paper Weights	14 lb. - 34 lb. Bond

*Cannot be used with SR841 Finisher or Interposer.

SR841 3,000-Sheet Finisher w/100-Sheet Stapling (Optional)*

Number of Trays	2
Paper Sizes	5.5" x 8.5" to 11" x 17"
Acceptable Paper Weights	14 lb. Bond - 140 lb. Index
Stacking Capacity	Proof Tray: 500 sheets (8.5" x 11" or smaller) 250 sheets (8.5" x 14" or larger) Shift Tray: 3,000 sheets (8.5" x 11" or smaller) 1,500 sheets (8.5" x 14" or larger)
Staple Capacity	Up to 100 pages per set (8.5" x 11" or smaller) Up to 50 sheets per set (8.5" x 14" or larger)
Staple Paper Size	8.5" x 11" to 11" x 17"
Staple Paper Weight	17 lb. - 20 lb. Bond
Staple Positions	Top, Bottom, 2 Staples, Top Slant
Finisher Accessories	Hole Punch Unit, Jogger Option

*Requires Finisher Adapter

Hardware Accessories (cont.)

SR970 3,000-Sheet Finisher w/50-sheet Stapling (Optional)

Number of Trays	2
Acceptable Paper Sizes	5.5" x 8.5" to 12" x 18"
Acceptable Paper Weights	14 lb. Bond - 140 lb. Index
Stacking Capacity	Proof Tray: 250 sheets (8.5" x 11" or smaller) 50 sheets (8.5" x 14" or larger) Shift Tray: 3,000 sheets (8.5" x 11" or smaller) 1,500 sheets (8.5" x 14" or larger)
Staple Capacity	Up to 50 pages per set (8.5" x 11" or smaller) Up to 30 sheets per set (8.5" x 14" or larger)
Staple Paper Size	8.5" x 11" to 11" x 17"
Staple Paper Weight	17 lb. - 28 lb. Bond
Staple Positions	Top, Bottom, 2 Staples, Top Slant
Finisher Accessories	Hole Punch Unit, Jogger Option

SR980 2,000-Sheet Finisher w/Saddle Stitch Stapling (Optional)

Number of Trays	2
Paper Sizes	5.5" x 8.5" to 12" x 18"
Acceptable Paper Weights	14 lb. Bond - 140 lb. Index
Stacking Capacity	Proof Tray: 250 sheets (8.5" x 11" or smaller) 50 sheets (8.5" x 14" or larger) Shift Tray: 2,000 sheets (8.5" x 11" or smaller) 1,000 sheets (8.5" x 14" or larger)
Staple Capacity	Up to 50 pages per set (8.5" x 11" or smaller) Up to 30 sheets per set (8.5" x 14" or larger) Saddle Stitch: Up to 15 sheets
Staple Paper Size	8.5" x 11" to 12" x 18"
Staple Paper Weight	17 lb. - 28 lb. Bond
Staple Positions	Top, Bottom, 2 Staples, Top Slant, Saddle Stitch
Saddle Stitch Paper Size	8.5" x 11", 8.5" x 14", 11" x 17", 12" x 18" SEF
Finisher Accessories	Hole Punch Unit, Jogger Option

Cover Interposer Tray (Optional)

Stack Capacity	200 sheets
Paper Sizes	5.5" x 8.5" to 11" x 17"
Acceptable Paper Weights	17 lb. Bond - 110 lb. Index

Other Optional Accessories

Copy Tray	If one of the finishers is not selected, the Copy Tray is required.
Tab Sheet Unit	
11" x 17" Tandem Tray Converter	
Legal Tray for LCT	
PostScript 3 Unit Type 3260	
Copy Connector Type 3260	
File Format Converter Type B	
HDD Data Overwrite Unit Type C	

Supplies

Black Toner Cartridge	36K output/cartridge (LTR 5% coverage)
Cyan Toner Cartridge	18K output/cartridge (LTR 5% coverage)
Magenta Toner Cartridge	18K output/cartridge (LTR 5% coverage)
Yellow Toner Cartridge	18K output/cartridge (LTR 5% coverage)
Staple for 100-Sheet Stapler	5,000 per cartridge
Staple for 50-Sheet Stapler	5,000 per cartridge
Staple for Saddle Stitch Stapler	2,000 per cartridge

Gestetner



Gestetner Five Dedrick Place, West Caldwell, NJ 07006
GESTETNER® is a registered trademark of Ricoh Corporation. Windows® and Windows® 95/98/Me/NT4.0/2000/XP/Server 2003 are registered trademarks of Microsoft Corporation. Macintosh®, Mac® OS and AppleTalk® are registered trademarks of Apple Computer, Inc. Adobe® and PostScript® are registered trademarks of Adobe Systems, Inc. PCL® is a registered trademark of Hewlett-Packard Company. RPCS™, SmartDeviceMonitor™, DeskTopBinder™ and Web Image Monitor™ are registered trademarks of Ricoh Company, Ltd. All other trademarks are the property of their respective owners. Product specifications subject to change without notice.

♻️ Printed in U.S.A. on recycled paper. (G2113) 25M 7/05