

Gestetner

Superior Black & White Productivity Backed By The Impact Of Color



MULTIFUNCTION SYSTEMS WITH CONVENIENCE COLOR

DSc428/DSc435/DSc445

Standard 80-Sheet
Automatic Reversing
Document Feeder

Optional 2,500-Sheet
Multi-Tray Finisher



Standard 100-Sheet
Bypass Tray

Standard 2 x 500-Sheet
Paper Trays

Optional 500-Sheet
Paper Bank

Maximum Performance In One Full-Color Multifunction System.

IF IT'S INCREASED PRODUCTIVITY AND VERSATILITY YOU DEMAND, THE HIGH-PERFORMANCE **GESTETNER DSc428/DSc435/DSc445 SERIES** IS IDEAL FOR YOUR NETWORKED OFFICE OR WORKGROUP. THESE POWERFUL SYSTEMS CONSOLIDATE DOCUMENT PROCESSING AND DISTRIBUTION INTO ONE SMART, RELIABLE SOLUTION. NOW YOU PRINT, SCAN AND COPY DOCUMENTS NOT ONLY IN BLACK & WHITE, BUT IN STRIKING COLOR TOO – COLOR YOU PAY FOR ONLY WHEN YOU USE IT.

COLOR RIGHT THERE WHEN YOU NEED IT

While most documents are black & white, having business color at your fingertips is a major advantage when you want to create even more impressive documents. Designed to elim-

inate the need for outsourcing color work or using separate devices for color and black & white jobs, these systems efficiently meet all your daily document workflow needs – bringing color conveniently in house!



The DSc428/DSc435/DSc445 Series prints black & white at 28/35/45 ppm and eye-catching color at 24/28/35 ppm.

WORK INTENSIVE PERFORMANCE

No matter what the task, the Gestetner DSc428/DSc435/DSc445 Series is ready to work. The DSc428 and DSc435 output your first page in just 8 seconds for black & white and 10 seconds for color, while the DSc445 does the same in a fast 6 and 8 seconds respectively. A fast print and copy speed of 28/35/45 ppm in black & white and 24/28/35 ppm in color – even in duplex mode – assures fast, efficient completion of even the most demanding jobs.

THE RIGHT CONNECTION

The DSc428/DSc435/DSc445 Series fits seamlessly into your network with multiple ways to connect. Print instantly via standard Ethernet and USB 2.0 interfaces, along with optional Wireless LAN and Bluetooth,



Choose from PCL 5c, PCL 6, RPCS, optional Adobe PostScript 3 and PDF Direct Print for all your printing needs.

and IEEE 1394 and IEEE 1284 parallel port.

ADVANCED PRINTING MADE SIMPLE

Anyone on your network can print in crisp black & white or brilliant color, as the systems support industry-standard protocols. Print from Word, PowerPoint, Excel and other popular applications. Optional Adobe® PostScript® 3™ makes the most of printed work that entails more complex file requirements, plus optimizes printing of Acrobat PDF files.

DIVERSE DOCUMENT DISTRIBUTION

The ability to scan hardcopy documents and distribute or share them electronically is a vital component in today's Internet savvy business world. These systems offer the tremendous time and cost-saving benefits of standard black & white and color scanning.

Scan-to capabilities. Once documents or images are scanned, they can be sent to various locations:

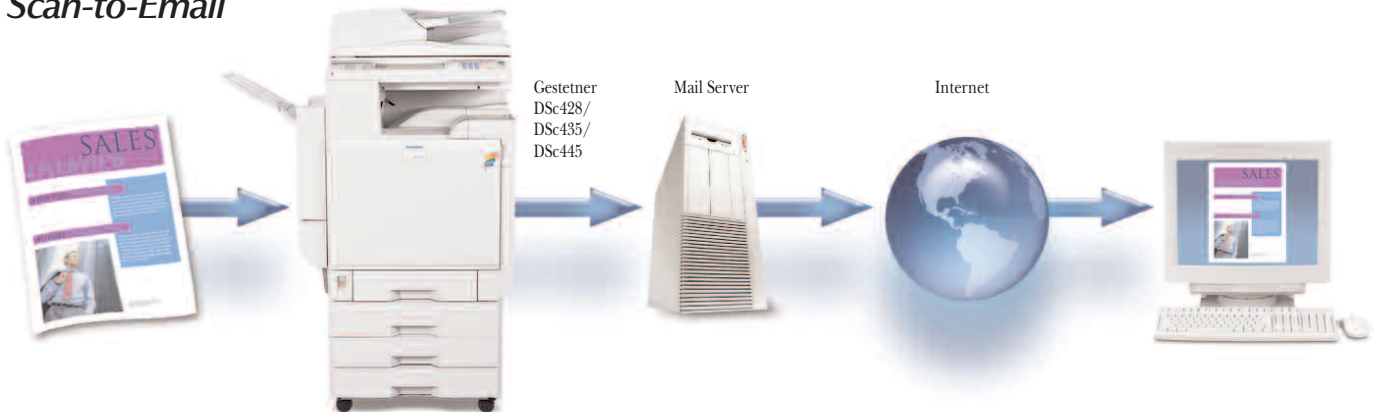
- Multiple e-mail recipients: Instantly and simultaneously send scanned documents in JPEG, TIFF or PDF file format to anyone in your existing e-mail system with LDAP support, or to new addresses you can enter manually.

- Network folders: Documents sent to designated network folders can be reviewed or edited by anyone with authorized network access, creating a cost-efficient archival, file sharing and print-on-demand solution.

- FTP Server: By bypassing the mail server, network traffic is minimized and large files can be shared more easily between remote workgroups and offices, even users of different operating systems.

- Network TWAIN further extends and enhances the paperless workplace by letting you edit captured black & white or color images back at the host PC, import them into other electronic documents or save them for another time.

Scan-to-Email



Save time and expense vs. costly faxing with Scan-to-Email. LDAP support lets you use your existing e-mail system, or you can store up to 2,000 more addresses – even enter names manually – for seamless distribution.



The DSc428/DSc435/DSc445 Series features large paper capacities, the ability to handle a wide range of paper sizes and weights, plus finishing options that include a Booklet Finisher, 2,500-Sheet Multi-Tray Finisher and a Multi-Bin Tray.

Fax option. The optional fax module makes it all complete, again with no dedicated server or utility software required. Swiftly fax paper-based documents the traditional way, or route faxes digitally to a PC. Internet FAX, forwarding inbound faxes to folders, receiving LAN-Fax results by e-mail and IP Fax maximize fax flexibility with minimal expense.

Document Server. Store printed, copied, scanned or faxed documents in the Document Server, then download them to your desktop for annotation or insert them into a new document with unique headers and page numbers.

VERSATILE PAPER HANDLING & FINISHING

Diverse paper handling lets you produce reports, newsletters and other documents up

to 12" x 18" in size and on up to 90 lb. index paper through the handy Bypass Tray.

Put the final touches on your hard work with either of two finisher options: the **Booklet Finisher**, ideal for folding and stapling sets; or the **2,500-sheet Multi-Tray Finisher** for the more traditional collating and stapling functions. Hole punching is an add-on option for both finishers.

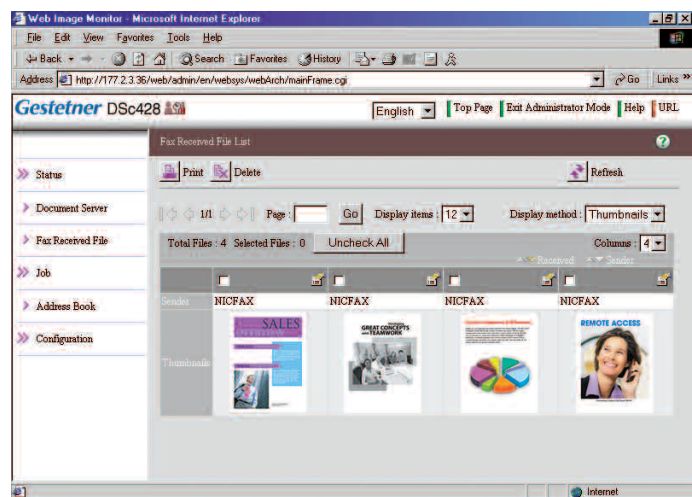


Maximize productivity with a large paper capacity of up to 3,100 sheets.

CONVENIENT DESKTOP DOCUMENT MANAGEMENT

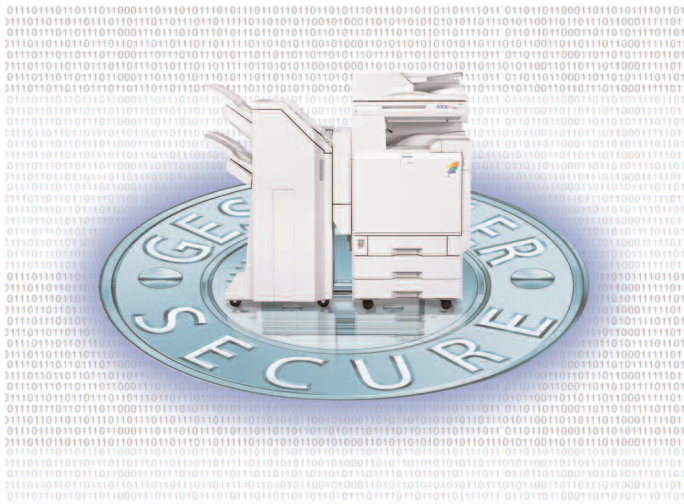
From any desktop with an Internet connection, you can monitor the system, manage activity, even change settings with the help of the web-based utility,

Web Image Monitor. Check job histories, see how much toner or paper is left, reboot the printer and more...without adding costly software.



Manage the Gestetner DSc428/DSc435/DSc445 right from your desktop with the web-based utility, Web Image Monitor.

Security Solutions



The Gestetner DSc428/DSc435/DSc445 Series comes with a complete suite of security solutions to stop threats by unauthorized users.

SECURE DATA PROTECTION

Protect your information assets with a system that delivers a comprehensive security package to prevent unauthorized access and information theft. Windows Authentication utilizes the existing Windows network username and password so no one without valid entry input can access the system. The optional **DataOverwrite-Security System** safeguards HDD data by automatically overwriting information after every copy, scan, fax or print job...not just once, but three times!

UNCOMPROMISING COST CONTROL

The DSc428/DSc435/DSc445 Series delivers the same unparalleled black & white functionality at the low cost per page you're used to, plus affords full-color any time you want it. The good news is, you only pay for the color you use. Plus, you can control usage by allowing only those authorized to access color, and by limiting groups in a domain to black & white or full-color with Window Authentication's handy Color Usage Restriction. What's more, having one high-performance solution on hand eliminates the need for separate systems and color outsourcing.



Embedded Software Architecture

CUSTOMIZATION CAPABILITY

The DSc428/DSc435/DSc445 Series can be customized to meet your unique requirements and dramatically enhance workflow with ingenious *Embedded Software Architecture™* – an innovative Java (J2ME)-compatible software development platform that allows for the development of key applications that run on

Gestetner MFPs and laser printers. By writing and embedding specific applications in the printer, the DSc428/DSc435/DSc445 Series can easily be customized to meet your special needs by controlling features such as: the operation panel, printing, saving files and scanning.



Incorporate the Gestetner DSc428/DSc435/DSc445 Series into your business and experience unmatched levels of workflow productivity. Contact your Gestetner dealer for more information.

www.gestetnerusa.com

Gestetner DSc428/DSc435/DSc445

General Specifications

Resolution	Copy: 600 dpi Print: Up to 1,200 x 1,200 dpi Scan: 600 dpi/256 gradations 11" x 17" maximum (full bleed on 12" x 18")
Copy Size	11" x 17" maximum (full bleed on 12" x 18")
Paper Sizes	First Paper Tray: 8.5" x 11" Second Paper Tray/Paper Bank: 11" x 17", 8.5" x 14", 8.5" x 11", 7.25" x 10.5", 8" x 13", 8.5" x 13" Bypass Tray: 5.5" x 8.5" to 12" x 18" Large Capacity Tray: 8.5" x 11" Custom Paper Sizes: Width: 3.5" to 12" (90 - 305 mm); Length: 5.8" to 18" (148 - 457.2 mm); 23.6" (600mm) for Fax/Printer; 18" (457.2mm) for Copy/Document Server
Warm-Up Time	Less than 99 seconds
First Copy Time	C2824/C3528: Black & white: 8 seconds Full-color: 10 seconds C4535: Black & white: 6 seconds Full-color: 8 seconds
Copy/Print Speed	C2824: 28/24 PPM (Black & white/Full-color) C3528: 35/28 PPM (Black & white/Full-color) C4535: 45/35 PPM (Black & white/Full-color)
Exposure Glass	Up to 11" x 17" (sheet/book/object)
Document Feeder	Automatic Reversing Document Feeder (ARDF) Original Size: Simplex: 5.5" x 8.5" to 11" x 17" Duplex: 5.5" x 8.5" to 11" x 17" Original Weight: Simplex: 11 lb. to 34 lb. Bond (40 - 128 g/m ²) Duplex: 14 lb. to 28 lb. Bond (52 - 105 g/m ²) Stack Capacity: 80 Sheets (20 lb. Bond) Up to 999
Multiple Copies	Up to 999
Input Capacity	Standard: 2 x 500 sheets plus 100-sheet bypass tray Maximum: 3,100 sheets
Output Capacity	Standard: 500 sheets plus 100-sheet face-up output tray Maximum: 2,600 sheets (with Multi-Tray Finisher)
Paper Weights	Trays, Duplex Unit, Paper Bank: 16 to 28 lb. Bond (60 - 105 g/m ²) Bypass Tray: 16 lb. Bond to 90 lb. Index (60 - 163 g/m ²)
Paper Types	Plain paper, laser printer qualified transparencies, and labels
Reproduction Ratios	7 reductions and 5 enlargement, 400%, 200%, 155%, 129%, 121%, 100%, 93%, 85%, 78%, 73%, 65%, 50%, 25%
Zoom	25% - 400% in 1% increments
Auto Duplex	Standard
Hard Disk Drive	80 GB (2 x 40 GB) (shared)
RAM	1 GB (shared)
Dimensions (WxDxH)	26.4" x 27.5" x 33.8" (670 x 698 x 859mm)
Weight	Approximately 264 lbs. (120kg)
Power Requirements	120V 12A 60Hz
Power Consumption	1,440 watts or less
Energy Saver Mode	45 watts or less

Printer Controller Specifications (Standard)

CPU	RM7065C 600MHz
RAM	1GB (shared)
Page Description Languages	PCL 5c, PCL 6, RPCS (standard); Genuine Adobe PostScript® 3/ PDF Direct Print (optional)
Standard Interfaces	10BaseT/100BaseTX Ethernet (RJ-45), USB 2.0 High Speed
Optional Interfaces (Choose one)	IEEE 1284 Parallel Type A, IEEE 1394 Type B, IEEE 802.11b Wireless LAN Type H, and Bluetooth Type 3245
Network/OS	Windows 95/98SE/ME/NT/2000/XP/Server 2003; NetWare 3.12, 3.2, 4.1, 4.11, 5.0, 5.1, 6; UNIX; Sun Solaris; HP-UX; SCO OpenServer; RedHat Linux; IBM AIX, Mac OS 8.6 - 9.2x, OS X 10.1 or later
Network Protocols	TCP/IP; IPX/SPX; SMB; AppleTalk (auto switching)
Utilities	SmartDeviceMonitor for Administrator and Client, Web SmartDeviceMonitor, Web Image Monitor, DeskTopBinder Lite; and Printer Utility for Mac (w/Adobe PostScript option)

Security Specifications

Security Features
DataOverwriteSecurity System (DOSS) Type D: (Optional): Security feature that overwrites latent data on the system's hard drive after copy, scan, fax and print jobs.
Other Security Features: SNMP v3 Authentication and Data Encryption (password/address book encryption); PDF Direct Print Password Protection; Locked (Secure) Print; User Codes; User Authentication

Scanner Specifications

Scanner Resolution	Monochrome mode: From 100 dpi to 600 dpi (1,200 dpi for TWAIN) Full-color mode: From 100 dpi to 600 dpi Default setting: 200 dpi
Scanning Speed	Scan-to-Email/Folder: Monochrome mode: 50 spm; Full-color mode: 35 spm Network TWAIN Monochrome mode: 36 spm; Full-color mode: 20 spm
Scan Area	Main Scan: 297mm, Sub Scan: 432mm
Scan Size	Original Sizes: 5.5" x 8.5" to 11" x 17"
Scan Mode	Standard: B&W Text; B&W OCR; B&W Text/Photo; B&W Photo; B&W Grayscale; Full Color Photo; Full Color Text Optional: Auto Color Selection (with optional File Format Converter)
Image Adjustment	Brightness; Contrast; Threshold; Gamma Adjustment; Halftone Pattern
File Formats	Black and white: TIFF (Single/Multi Page); PDF (Single/Multi Page) Grayscale/Full color: JPEG (Single Page); PDF (Single/Multi Page)
Scan-to modes	Scan-to-Email (with LDAP support), Scan-to-Folder (SMB/FTP), Network TWAIN scanning

Document Server Specifications

Capacity	80 GB (2 x 40 GB)
Max. Stored Documents	2,000
Max. Pages/Document	1,000
Max. Pages of All Stored Documents	9,000

Facsimile Specifications

Fax Unit Type 3245	
Type	ITU-T G3
Circuit	PSTN, PBX
Resolution	200 x 100 dpi; 200 x 200 dpi; 400 x 400 dpi (optional with SAF memory)
Modem Speed	33,600 bps - 2,400 bps with automatic shift down
Transmission Speed	2.0 seconds (Based on ITU-T Test chart #1 in standard resolution, JBIG compression)
Scan Speed	0.86 seconds (A4, any mode)
Compression Method	MH/MR/MMR/JBIG
Auto Dials	2,000 Quick Dials; 100 Groups Dials (500 locations each)
Memory Capacity	4 MB (320 pages); Maximum 28 MB (2,240 pages)
Additional Modes Supported	Internet Fax by E-mail (T.37), IP Fax (T.38), LAN Fax, Fax Forwarding to E-mail, Fax Reception notice via E-mail, Fax Transmission notice via E-mail
Options	Additional G3 Fax Line Type 3245 (up to 2 additional), Fax SAF Memory (32 MB), Handset Type 1018

Hardware Accessories

PS580 1-Tray Paper Bank*	
Paper Size	5.5" x 8.5" to 11" x 17"
Paper Weight	16 to 28 lb. Bond (60 - 105 g/m ²)
Stack Capacity	500 sheets
PS590 2-Tray Paper Bank*	
Paper Size	5.5" x 8.5" to 11" x 17"
Paper Weight	16 to 28 lb. Bond (60 - 105 g/m ²)
Stack Capacity	2 trays x 500 sheets
PS600 Large Capacity Tray*	
Paper Size	8.5" x 11"
Paper Weight	16 to 28 lb. Bond (60 - 105 g/m ²)
Stack Capacity	2 tandem trays x 1,000 sheets
FAC28 Cabinet*	
*Please note either the Cabinet Stand or one of the paper options must be selected.	
PT460 Multi-Bin	
Number of Bins	2 bins
Paper Size	8.5" x 11" to 11" x 17"
Paper Weight	16 to 28 lb. Bond (60 - 105 g/m ²)
Stack Capacity	Tray 1: 100 sheets, Tray 2: 250 sheets
SR960 Multi-Tray Finisher	
Paper Sizes	8.5" x 11" to 11" x 17"
Paper Weights	16 to 28 lb. Bond (60 - 105 g/m ²)
Stack Capacity	Upper Tray: 500 sheets (8.5" x 11" or smaller), 250 sheets (11" x 17" or smaller); Lower Tray: Staple: 1,500 sheets (8.5" x 11"); 750 sheets (11" x 17" or smaller), No Staple: 2,000 sheets (8.5" x 11"); 750 sheets (11" x 17" or smaller)
Staple Capacity	50 sheets (8.5" x 11" or smaller), 30 sheets (8.4" x 14" or larger)
Staple Paper Size	8.5" x 11" to 11" x 17"
Staple Paper Weight	17 to 24 lb. (64 - 90 g/m ²)
Staple Position	1 staple: 3 positions (top, top slant, bottom) 2 staples: 1 position (left 2/top 2)
Stapler Capacity	5,000 per cartridge
Punch Option Type 1045 available for Multi-Tray Finisher	
SR950 Booklet Finisher	
Paper Sizes	8.5" x 11" to 11" x 17"
Paper Weights	16 to 34 lb. Bond (60 - 128 g/m ²)
Stack Capacity	Non-Staple Sort: 1,000 sheets (letter) Staple Sort: 1,000 sheets (letter) Folding: Folded - 10 sets (6 - 10 sheets/set), 20 sets (2 - 5 sheets/set)
Staple Capacity	50 sheets 8.5" x 11"; 25 sheets larger than 8.5" x 11"
Staple Paper Size	8.5" x 11" to 11" x 17"
Staple Position	1 Staple: 2 positions, 2 Staples: 2 positions
Stapler Capacity	5,000 per cartridge
Booklet Paper Sizes	8.5" x 11", 8.5" x 14", 11" x 17"
Booklet Paper Weights	17 to 20 lb. (64 - 80 g/m ²)
Punch Option Type 2238 available with Booklet Maker	

Additional Accessories

File Format Converter Type B
Platen Cover Type 3800C
Key Counter Bracket Type H
Scanner Accessibility Option Type 3245

Supplies

Black Toner (Yield: 24,000 @ 5%)
Cyan Toner (Yield: 10,000 @ 5%)
Yellow Toner (Yield: 10,000 @ 5%)
Magenta Toner (Yield: 10,000 @ 5%)
Waste Toner Bottle

Gestetner



Gestetner Five Dedrick Place, West Caldwell, NJ 07006

GESTETNER® is a registered trademark of Ricoh Corporation. Windows® and Windows® 3.1/95/98/Me/NT4.0/XP are registered trademarks of Microsoft Corporation. Macintosh®, Mac OS® and AppleTalk® are registered trademarks of Apple Computer, Inc. Adobe® and PostScript® are trademarks of Adobe Systems, Inc. PCL® is a registered trademark of Hewlett-Packard Company. RPCS® is a trademark of Ricoh Company, Ltd. All other trademarks are the property of their respective owners. Product specifications subject to change without notice. Print speeds may be impacted by network, application or PC performance. Products are shown with optional features.

Printed in U.S.A. on recycled paper. (G2120) 25M 6/05