

# Gestetner

*Exceeding Standards In High-Speed Color Production*



COLOR DIGITAL IMAGING SYSTEM

CS555

Standard 100-Sheet Automatic Reversing Document Feeder

Optional Cover Interposer

Optional 3,000-Sheet Finisher



Standard 100-Sheet Bypass Tray

Optional 4,000-Sheet Large Capacity Tray

Standard 2 x 1,100-Sheet Tandem Paper Trays

Standard 2 x 550-Sheet Universal Paper Trays

## Accelerate In-House Productivity, Efficiency And Turnaround

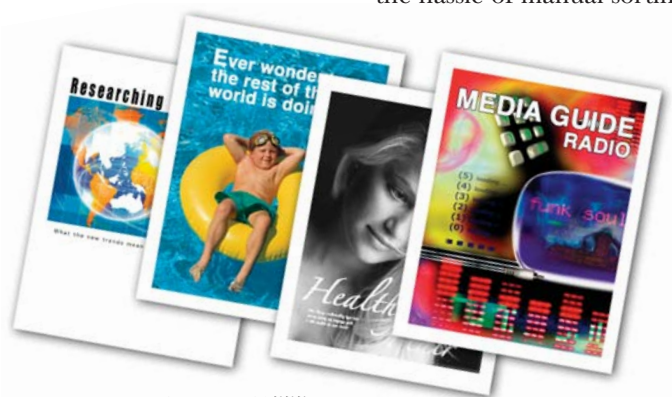
THE NEW HIGH-PERFORMANCE GESTETNER CS555 STREAMLINES THE ONGOING PRODUCTION-LEVEL WORK DEMANDS OF BUSY CENTRAL REPRODUCTION DEPARTMENTS AND PRINT-FOR-PAY ENVIRONMENTS. THIS POWERFUL DOCUMENT IMAGING SYSTEM REPLACES THE NEED FOR MULTIPLE DEVICES AND ALLOWS YOU TO MERGE PRODUCTION COLOR, BLACK & WHITE AND MIXED WORKFLOW IN ONE SYSTEM, TAKING JOB SPLITTING AND OUTSOURCING PERMANENTLY OFF YOUR "TO DO" LIST. TOPPING OFF THE GESTETNER CS555'S VERSATILITY IS AN ARRAY OF ADVANCED COLOR MANAGEMENT CONTROLS AND FINISHING CAPABILITIES THAT GIVES YOUR DOCUMENTS THE PROFESSIONALISM THAT KEEPS CUSTOMERS SATISFIED.

### CONSISTENT QUALITY IS PRIORITY ONE

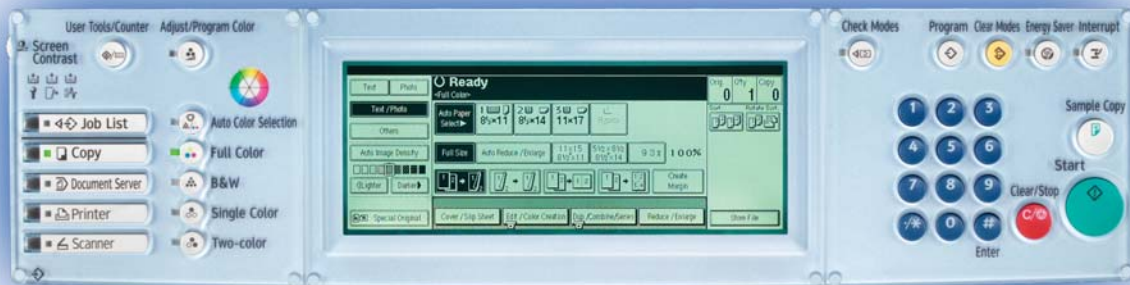
Great work starts with superior image quality. The Gestetner CS555 will automatically self-calibrate to ensure consistent color from the first page to the last. In keeping with the high standards that your customers require, the Gestetner CS555's new oil-less toner technology additionally helps to provide faithful color reproduction.

### THE SPEED YOU NEED FOR ANY TASK

The Gestetner CS555 ensures fast, seamless document production for all types of jobs, delivering an incredible 55 pages per minute in full-color and 60 pages per minute in black & white. Now you can output the most complex color, monochrome and mixed jobs with one powerful multi-purpose solution, eliminating the expense of separate devices and the hassle of manual sorting.



The high-speed Gestetner CS555 prints stunning full-color at 55 ppm and black & white at 60 ppm.



Quickly access all functions from the easy-to-use control panel.

Reduced job turnaround time, cost-efficient operation and uncompromised throughput continue with standard automatic duplexing that races through two-sided imaging at virtually 100% of the simplex speeds, while reducing paper usage.

**COLOR AND WORKFLOW MANAGEMENT KEEPS PRODUCTION ON TRACK**

Gestetner has partnered with EFI, a leader in digital color printing technology, to create two specially designed print controller options for the CS555 that increase productivity by allowing you to easily control and manage your print workflow.



The Gestetner CS555 can be configured with either an optional **Fiery® E-7000** or **E-8000 Print Controller** to optimize the system's image quality and engine performance. Both controllers are configured with Adobe® PostScript® 3™. In addition to printing, these controllers also support high-quality image scanning for seamless digital document distribution.

The E-7000 Print Controller is a convenient entry-level solution that satisfies a range of in-house color document production needs, from the making of manuals, reports and proposals to booklets, newsletters and more. Higher volume and more color-intensive workloads call for the robust

server-based E-8000 Print Controller that offers a more extensive menu of productivity tools and graphic capabilities.

**FIERY TOOLS MAKE ANY LEVEL USER A PRO**

Great color comes right out of the box with the Gestetner CS555. **Fiery ColorWise** and **ColorWise Pro** provide a complete menu of color management and calibration tools for fine tuning color and keeping quality consistent. Beginners and seasoned users alike can perform functions with equal ease – whether accurately simulating PANTONE® spot colors, creating output in different file formats and color spaces, or

downloading, customizing and saving ICC profiles under separate jobs or clients.

**Command Workstation** gives you the flexibility to oversee multiple Fiery-driven devices at once, plus perform productive tasks that include managing print queues, previewing files, load balancing, archiving and reprinting without re-RIPing files for uncompromised throughput. You can also collect data on all your activities so you're always on top of your workflow and time schedules. Even when you're working off site, you can still monitor the printer remotely via the Internet from any PC on your network, thanks to advanced Web Tools.

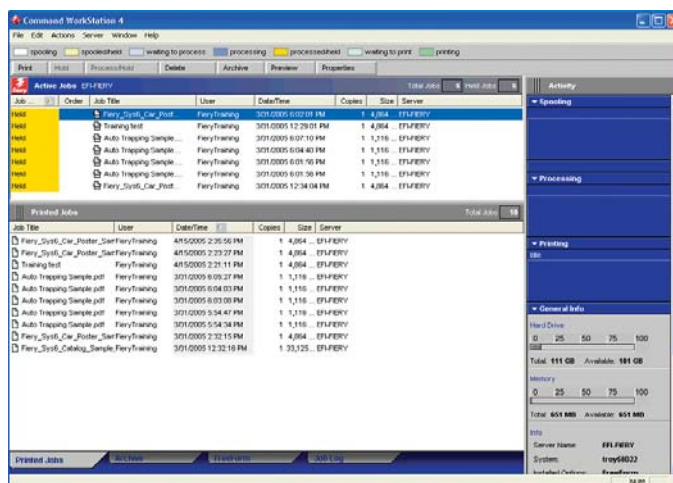


Duplexing at virtually 100% of simplex speed.

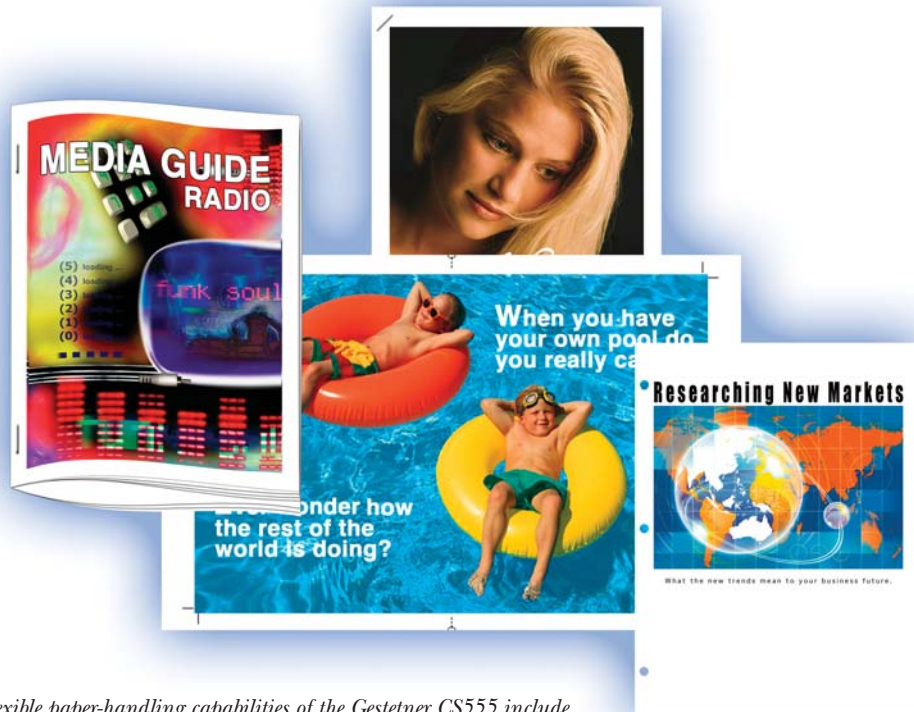
The standard 100-Sheet Automatic Reversing Document Feeder further enhances productivity by quickly scanning one- or two-sided originals at a swift 45 ipm (images per minute) for color and 60 ipm for black & white pages.



The standard 100-Sheet ARDF accommodates sheet sizes from 5.5" x 8.5" to 11" x 17".



Command Workstation gives you the ability to make sure that the highest priority jobs are printed first and to make adjustments on the fly.



*The flexible paper-handling capabilities of the Gestetner CS555 include stapling, hole punching, booklet making and folding on a variety of sheet sizes, including legal, ledger and 12" x 18" (11" x 17" full bleed).*

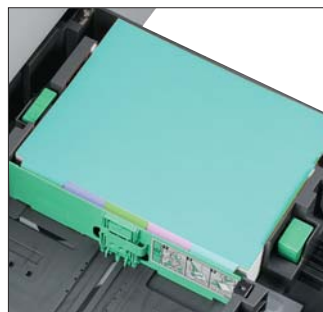
Bundled utilities **Fiery Scan** and **Fiery Downloader** streamline the capturing of images and creation of digital documents, while **Fiery NetWise** ensures automatic integration of your print controller into any network environment. The optional **Fiery Impose software** puts complete content control at your fingertips. Build new documents on the controller without needing the original application or additional network transfers. Expand your services to customers by combining pages created by different users, on different platforms and in varying sizes. Or generate new complex documents made from multiple software applications and file types. It's all within your power!

Productivity is further enhanced by a host of automatic features that free you up to focus on other tasks. The intelligent system quickly detects your orig-

inal size and chooses the correct copy paper size and tray to use, so you don't have to worry about programming. Intelligent Automatic Color Selection (ACS) extends efficiency by reading which pages to reproduce in color versus black & white – even when processing mixed originals! And on that rare occasion when a driver setting conflict arises, the quick recovery Fiery driver detects and resolves the situation without user intervention.

#### **VERSATILE PAPER HANDLING FOR JOBS OF ALL SIZES**

A plentiful paper reserve promises virtually uninterrupted production of lengthy jobs, especially when the standard supply is coupled with the 4,000-Sheet Large Capacity Tray to provide a massive 7,400-sheet total. What's more, the CS555's top tray can be reloaded while the system is in use, so production



*Print and/or collate banks of tabs into documents in-house with the Tab Sheet Unit.*

is never halted. When more specialized documents like insurance forms, legal contracts or financial statements are called for on a frequent basis, the LCT can be converted to process 8.5" x 14" paper.

As special stocks and sizes are integral in your work, the Gestetner CS555 is designed to streamline production of these unique jobs with flexible media-handling capabilities. For two-page full-bleed output, you can

feed paper up to 12" x 18" in size through the Bypass Tray, as well as the 2nd and 3rd paper trays. Processing covers and inserts is effortless too, as the system can support up to 140 lb. Index. Documents requiring tabs are just as simple to run via the two standard 550-sheet adjustable paper trays, or print right onto tab extensions. The dual 1,100-sheet letter-size tandem tray when optionally converted to hold ledger-size paper accommodates oversized output like spreadsheets.



*The 100-Sheet Bypass Tray accepts paper sizes up to 12" x 18".*



Choose from a variety of productive finishers that can collate, staple and produce finished documents with front and back covers.

**ONE-TOUCH FINISHING FOR PROFESSIONAL RESULTS**

Professional finishing facilitates in-house production and dramatically enhances the look of documents. Produce stapled reports with covers, full-color brochure bound reports and other customized materials with a choice of efficient Document Finishers.

Covers that add distinction to reports are seamlessly inserted (after fusing is finished to preserve image quality) by the Cover Interposer. Job output stays clearly divided and neatly organized with the 9-Bin Mailbox option, allowing for easy retrieval of document sets for upcoming meetings.

conserve paper. You gain the immediate benefits of electronically e-mailing and archiving your documents.

**PRODUCTIVE COLOR IMAGING**  
Discover in greater detail the many ways the Gestetner CS555

breaks new ground in production-level productivity. For more information on this new full-color imaging system, contact your authorized Gestetner dealer.

[www.gestetnerusa.com](http://www.gestetnerusa.com)

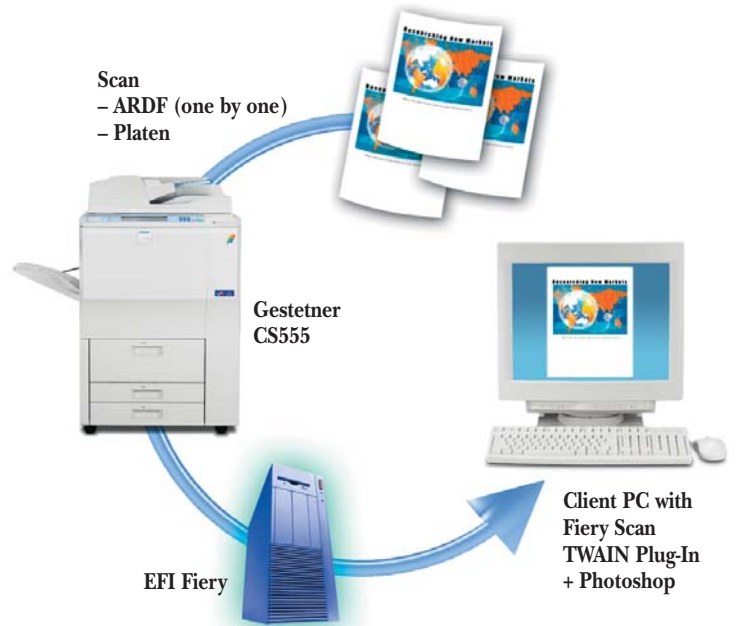


Bring full-color newsletters and stylish bound booklets to life in letter, legal or ledger size with the 2,000-Sheet Finisher with Saddle Stitch Stapler, or incorporate either of two 3,000-sheet Finishers (with a 50- or 100-sheet stapling capacity) to effortlessly collate and staple multi-page documents.

**CONSOLIDATED WORKFLOW**  
Because the Gestetner CS555 handles high-volume color, black & white and mixed jobs at top speed, you'll no longer waste time separating jobs between systems, or need to outsource color jobs. Now, outstanding high-speed color complements the same reliable, cost-efficient black & white performance you've come to know...with high-yield supplies and long-life consumables that give you even more value.

With the Gestetner CS555's full-color scanning capability, you can send documents electronically to one or many recipients in a single operation to speed the approval process and

**Fiery Scan TWAIN Plug-In**



Scan  
- ARDF (one by one)  
- Platen

Gestetner  
CS555

EFI Fiery

Client PC with  
Fiery Scan  
TWAIN Plug-In  
+ Photoshop

# Gestetner CS555

## General Specifications

<b>Configuration</b>	Console
<b>Memory</b>	4 x 80 GB HDD = 320 GB HDD (Shared)
<b>Printing Process</b>	4-drum Electrostatic Transfer System with Internal Transfer Belt and Dry Two-component Development
<b>Output Speed*</b>	Full-color: 55 ppm Black & white: 60 ppm
<b>Multiple Copying</b>	1 to 999
<b>Warm-up Time</b>	300 seconds
<b>Original Scanning</b>	Flatbed with Moving 3-line CCD Array
<b>Fusing</b>	Oil-less Belt Fusing System
<b>First Copy Output Time</b>	Full-color: 7.5 seconds Black & white: 6.5 seconds
<b>Resolution</b>	600 dpi
<b>Document Feeding</b>	100-Sheet ARDF Standard
<b>Original Type</b>	Sheets/Books/3D Objects
<b>Maximum Original Size</b>	11" x 17"
<b>Maximum Image Area</b>	11.69" x 18"
<b>Standard Paper Capacity</b>	1,100 x 2 + 550 x 2 + 100 Bypass
<b>Optional Paper Supplies</b>	4,000-Sheet LCT (Max. Capacity: 7,400 Sheets)
<b>Paper Sizes/Weights</b>	
<b>Standard Tray 1</b>	Paper Sizes: 8.5" x 11" Paper Weights: 14 - 34 lb. Bond
<b>Standard Trays 2 &amp; 3</b>	Paper Sizes: 12" x 18"; 11" x 17"; 8.5" x 14"; 8" x 13"; 8.5" x 13"; 8.25" x 13"; 8.5" x 11"; 7.25" x 10.5"; 5.5" x 8.5" Paper Weights: 14 - 34 lb. Bond
<b>100-Sheet Bypass Tray</b>	Paper Sizes: 12" x 18"; 11" x 17"; 8.5" x 14"; 8" x 13"; 8.5" x 13"; 8.25" x 13"; 8.5" x 11"; 7.25" x 10.5"; 5.5" x 8.5" Paper Weights: 14 lb. Bond - 140 lb. Index
<b>4,000-sheet LCT</b>	Paper Sizes: 8.5" x 11" Paper Weights: 14 - 34 lb. Bond
<b>Paper Type</b>	Plain paper, Recycled paper, Transparencies
<b>Duplexing</b>	Standard
<b>Output Tray Capacity</b>	500 sheets

## Advanced Copy/Scanning Features

<b>Scanning Resolution</b>	Default: 200 dpi User Selectable 100, 150, 200, 300, 400, 600-dpi
<b>Scanning Speed</b>	Full-color: 45 spm/Black & white: 60 spm
<b>Max. Scan Area</b>	11" x 17"
<b>Color Modes</b>	Full-color, Black & White, Auto Color Selection, Single Color, Twin Color
<b>Original Selection</b>	Text, Photo, Auto Text-Photo Separation, Map, Pale, Generation, Highlight Pen, Inkjet
<b>Image Density</b>	Automatic/Manual (9 levels)
<b>Magnification</b>	Auto, Preset Reduce & Enlarge, Directional, N-up
<b>Zoom</b>	25% - 400% in 1% increments
<b>Preset Reduction Ratios</b>	93%, 85%, 78%, 73%, 65%, 50%, 25%
<b>Preset Enlargement Ratios</b>	121%, 129%, 155%, 200%, 400%
<b>Erase</b>	Center, Border, Center & Border
<b>Covers &amp; Inserts</b>	Front, Front & Back, Printed or Blank
<b>Color Editing</b>	Color Balance, Color Conversion, Color Erase
<b>Image Editing</b>	Repeat, Centering, Mirror, Positive/Negative
<b>Stamping</b>	Page Numbering, User/Date/Presets Stamps
<b>Scan-to-Email w/LDAP</b>	Supported
<b>Scan-to-Folder</b>	Supported
<b>Scan-to-FTP Server</b>	Supported
<b>Network TWAIN Scanning</b>	Supported

## Physical Specifications

<b>Dimensions (WxDxH)</b>	29.5" x 33.5" x 41.3" (excludes standard ARDF)
<b>Weight</b>	656.9 lb. (includes standard ARDF)
<b>Power Requirements</b>	120V/20A, 60Hz
<b>Power Consumption</b>	Less than 1,920W

## Options And Accessories

<b>E-7000 Print Controller* (Optional)</b>	
<b>CPU</b>	Intel Celeron 2 GHz
<b>Memory (Std./Max.)</b>	512 MB
<b>Hard Disk Drive</b>	40 GB
<b>Printer Languages</b>	Adobe PostScript 3
<b>Standard Interface</b>	10/100/1000BaseTX with RJ-45
<b>Network Protocols</b>	TCP/IP, Novell IPX/SPX, SMB AppleTalk with auto-switching Command Workstation 4, ColorWise Pro Tools, Fiery Downloader, Fiery Scan (TWIN) plug-in, Remote Scan), Fiery FreeForm 2, Fiery WebTools, Fiery Mail Port, Fiery Printer Delete Utility
<b>Utilities</b>	Interface cable and board are included in the controller package.

<b>E-8000 External Print Controller* (Optional)</b>	
<b>CPU</b>	Intel Pentium 4 3.06 GHz
<b>Memory (Min./Max.)</b>	512 MB/1GB
<b>Hard Disk Drive</b>	80 GB
<b>Printer Languages</b>	Adobe PostScript 3
<b>Standard Interface</b>	10/100/1000BaseTX with RJ-45
<b>Network Protocols</b>	TCP/IP, Novell IPX/SPX, AppleTalk with auto-switching Command Workstation 4, ColorWise Pro Tools, Fiery Downloader, Fiery Scan (TWIN) plug-in, Remote Scan), Fiery FreeForm 2, Fiery WebTools, Fiery Mail Port, Fiery Printer Delete Utility
<b>Utilities</b>	*E-8000 External Printer Controller will not launch until 09:05; Specifications are subject to change at time of launch.

\*E-8000 External Printer Controller will not launch until 09:05; Specifications are subject to change at time of launch.

<b>Automatic Reversing Document Feeder (Standard)</b>	
<b>Stack Capacity</b>	100 Sheets
<b>Original Size</b>	5.5" x 8.5" to 11" x 17"
<b>Original Weight</b>	Simplex: 11 lb. - 34 lb. Bond Duplex: 14 lb. - 34 lb. Bond
<b>Batch Mode</b>	Supported
<b>Mixed-Size Originals</b>	Supported
<b>Original Feeding Speed</b>	Full-color: 45-spm Black & white: 60-spm

<b>Large Capacity Tray* (Optional)</b>	
<b>Paper Capacity</b>	4,000 sheets (Letter) 2,500 sheets (Legal)**
<b>Acceptable Paper Sizes</b>	8.5" x 11", 8.5" x 14"***
<b>Acceptable Paper Weights</b>	14 lb. - 34 lb. Bond
	*Requires LCT Adapter **Requires Legal size conversion kit

<b>9-Bin Mailbox* (Optional)</b>	
<b>Number of Bins</b>	9
<b>Stack Capacity per Bin</b>	100 sheets
<b>Acceptable Paper Sizes</b>	5.5" x 8.5" to 11" x 17"
<b>Acceptable Paper Weights</b>	14 lb. - 34 lb. Bond
	*Cannot be used with SR841 Finisher or Interposer.

<b>Cover Interposer Tray (Optional)</b>	
<b>Stack Capacity</b>	200 sheets
<b>Acceptable Paper Sizes</b>	5.5" x 8.5" to 11" x 17"
<b>Acceptable Paper Weights</b>	17 lb. Bond - 110 lb. Index
<b>SR841 3,000-sheet Finisher w/100-sheet Stapling*</b>	
<b>Number of Trays</b>	2
<b>Acceptable Paper Sizes</b>	5.5" x 8.5" to 11" x 17"
<b>Acceptable Paper Weights</b>	14 lb. Bond - 140 lb. Index
<b>Stacking Capacity</b>	
<b>Proof Tray</b>	500 sheets (8.5" x 11" or smaller) 250 sheets (8.5" x 14" or larger)

## Options And Accessories (cont.)

<b>Shift Tray</b>	3,000 sheets (8.5" x 11" or smaller) 1,500 sheets (8.5" x 14" or larger)
<b>Staple Capacity</b>	Up to 100 pages per set (8.5" x 11" or smaller) Up to 50 sheets per set (8.5" x 14" or larger)
<b>Staple Paper Size</b>	8.5" x 11" to 11" x 17"
<b>Staple Paper Weight</b>	17 lb. - 20 lb. Bond
<b>Staple Positions</b>	Top, Bottom, 2 Staples, Top Slant
<b>Finisher Accessories</b>	Finisher Adapter Hole Punch Unit Jogger Option

\*Requires Finisher Adapter

<b>SR970 3,000-sheet Finisher w/50-sheet Stapling (Optional)</b>	
<b>Number of Trays</b>	2
<b>Acceptable Paper Sizes</b>	5.5" x 8.5" to 12" x 18"
<b>Acceptable Paper Weights</b>	14 lb. Bond - 140 lb. Index
<b>Stacking Capacity</b>	
<b>Proof Tray</b>	250 sheets (8.5" x 11" or smaller) 50 sheets (8.5" x 14" or larger)
<b>Shift Tray</b>	3,000 sheets (8.5" x 11" or smaller) 1,500 sheets (8.5" x 14" or larger)
<b>Staple Capacity</b>	Up to 50 pages per set (8.5" x 11" or smaller) Up to 30 sheets per set (8.5" x 14" or larger)
<b>Staple Paper Size</b>	8.5" x 11" to 11" x 17"
<b>Staple Paper Weight</b>	17 lb. - 28 lb. Bond
<b>Staple Positions</b>	Top, Bottom, 2 Staples, Top Slant
<b>Finisher Accessories</b>	Hole Punch Unit Jogger Option

## SR980 2,000-sheet Finisher w/Saddle Stitch Stapling (Optional)

<b>Number of Trays</b>	2
<b>Acceptable Paper Sizes</b>	5.5" x 8.5" to 12" x 18"
<b>Acceptable Paper Weights</b>	14 lb. Bond - 140 lb. Index
<b>Stacking Capacity</b>	
<b>Proof Tray</b>	250 sheets (8.5" x 11" or smaller) 50 sheets (8.5" x 14" or larger)
<b>Shift Tray</b>	2,000 sheets (8.5" x 11" or smaller) 1,000 sheets (8.5" x 14" or larger)
<b>Staple Capacity</b>	Up to 50 pages per set (8.5" x 11" or smaller) Up to 30 sheets per set (8.5" x 14" or larger) Saddle Stitch: Up to 15 sheets
<b>Staple Paper Size</b>	8.5" x 11" to 12" x 18"
<b>Staple Paper Weight</b>	17 lb. - 28 lb. Bond
<b>Staple Positions</b>	Top, Bottom, 2 Staples, Top Slant, Saddle Stitch
<b>Saddle Stitch Paper Size</b>	8.5" x 11", 8.5" x 14", 11" x 17", 12" x 18" SEF
<b>Finisher Accessories</b>	Hole Punch Unit Jogger Option

## Other Optional Accessories

<b>Copy Tray</b>	If one of the Finishers is not selected, the Copy Tray is required.
<b>Legal Tray for LCT</b>	
<b>Tab Sheet Unit</b>	
<b>11" x 17" Tandem Tray Converter</b>	
<b>Copy Connector Type 3260</b>	
<b>HDD Data Overwrite Unit Type C</b>	

## Supplies

<b>Black Toner Cartridge</b>	36K output/cartridge (LTR 5% coverage)
<b>Cyan Toner Cartridge</b>	18K output/cartridge (LTR 5% coverage)
<b>Magenta Toner Cartridge</b>	18K output/cartridge (LTR 5% coverage)
<b>Yellow Toner Cartridge</b>	18K output/cartridge (LTR 5% coverage)
<b>Staple for 100-Sheet Stapler</b>	5,000 per cartridge
<b>Staple for 50-Sheet Stapler</b>	5,000 per cartridge
<b>Staple for Saddle Stitch Stapler</b>	2,000 per cartridge

# Gestetner



Gestetner Five Dedrick Place, West Caldwell, NJ 07006

GESTETNER® is a registered trademark of Ricoh Corporation. Windows® and Windows® 95/98/Me/NT4.0/2000/XP/Server 2003 are registered trademarks of Microsoft Corporation. Macintosh®, Mac® OS and AppleTalk® are registered trademarks of Apple Computer, Inc. Adobe® and PostScript® are registered trademarks of Adobe Systems, Inc. PCL® is a registered trademark of Hewlett-Packard Company. RPCS™, SmartDeviceMonitor™, DeskTopBinder™ and Web Image Monitor™ are registered trademarks of Ricoh Company, Ltd.

All other trademarks are the property of their respective owners. Product specifications subject to change without notice.

♻️ Printed in U.S.A. on recycled paper. (G2114) 10M 7/05